

Physical properties of Campi Flegrei tuffs from variable depths



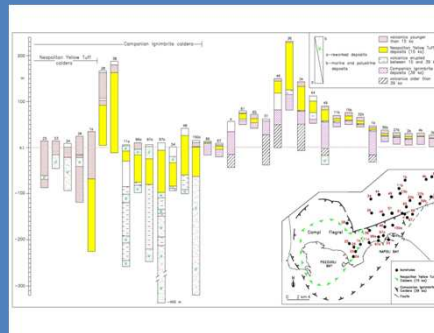
S. Vinciguerra¹, P. Del Gaudio¹, A. Iarocci¹, C. David², P. Scarlato¹

1) Istituto Nazionale di Geofisica e Vulcanologia, Sezione di Roma1, Rome, Italy

2) Université de Cergy-Pontoise, Géosciences&Environnement, Cergy –Pontoise, France



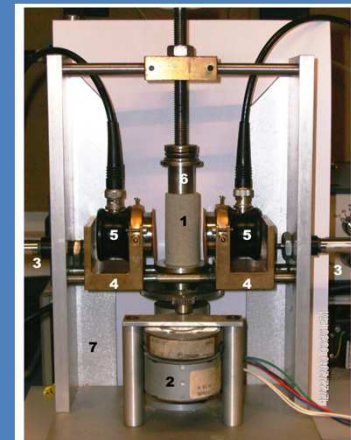
Campi Flegrei caldera (Southern Italy) DEM



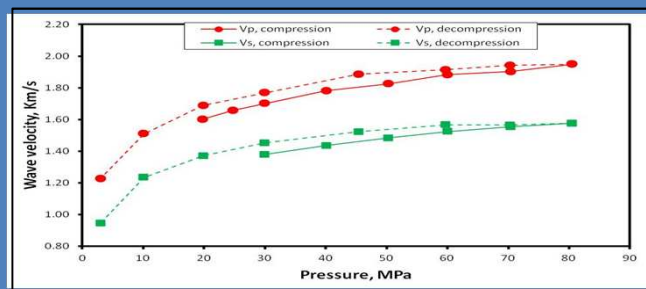
Campi Flegrei Boreholes



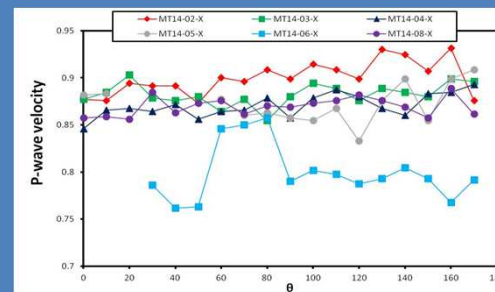
Fluid permeameter



1 - core sample
2 - stepping motor
3 - air-driven jacks
4 - transducer holders
5 - ultrasonic transducers
6 - vertical piston
7 - rigid frame



Effect of increasing lithostatic pressure on V_p



Seismic anisotropy

