

Reservoir Mapping by Global Correlation Analysis

Global Correlation Analysis is applied on seismic data to locate similarities in the geological structure at different locations.

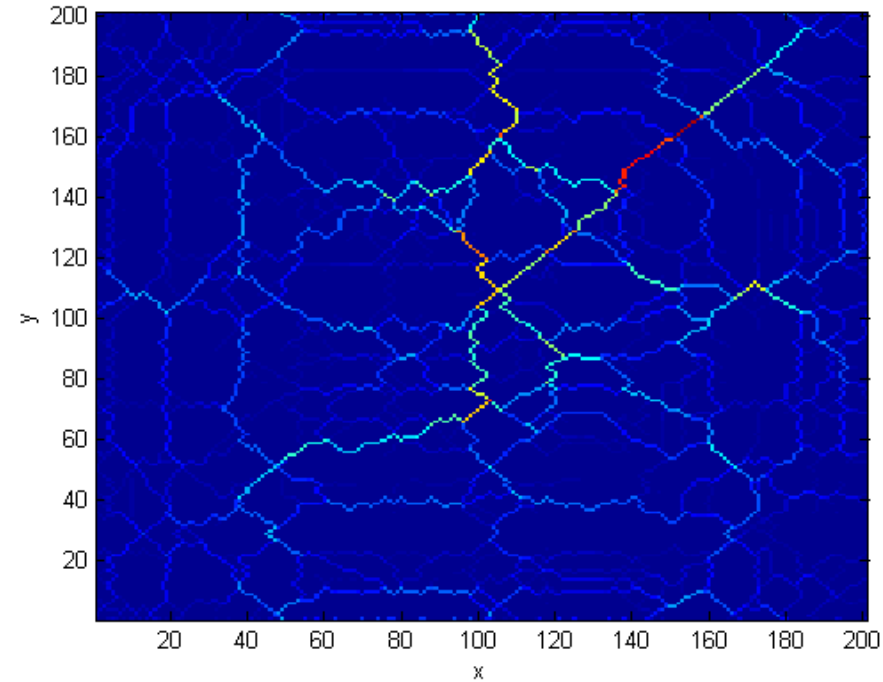
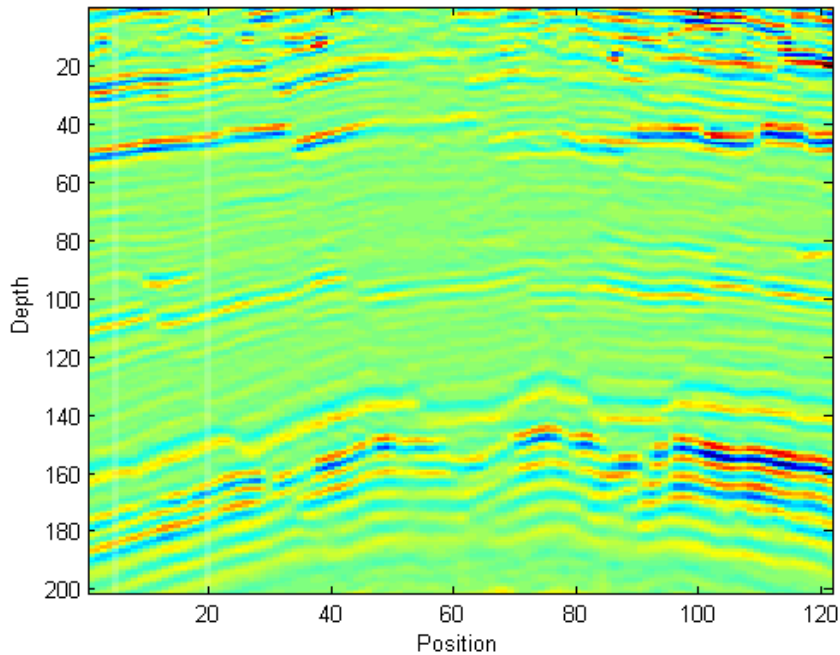


Fig. 1 – To the left: seismic data with two highlighted traces. To the right: results from the GCA. Diagonals represent parts with similar sequences, while horizontal and vertical parts indicates differences in layer thickness.