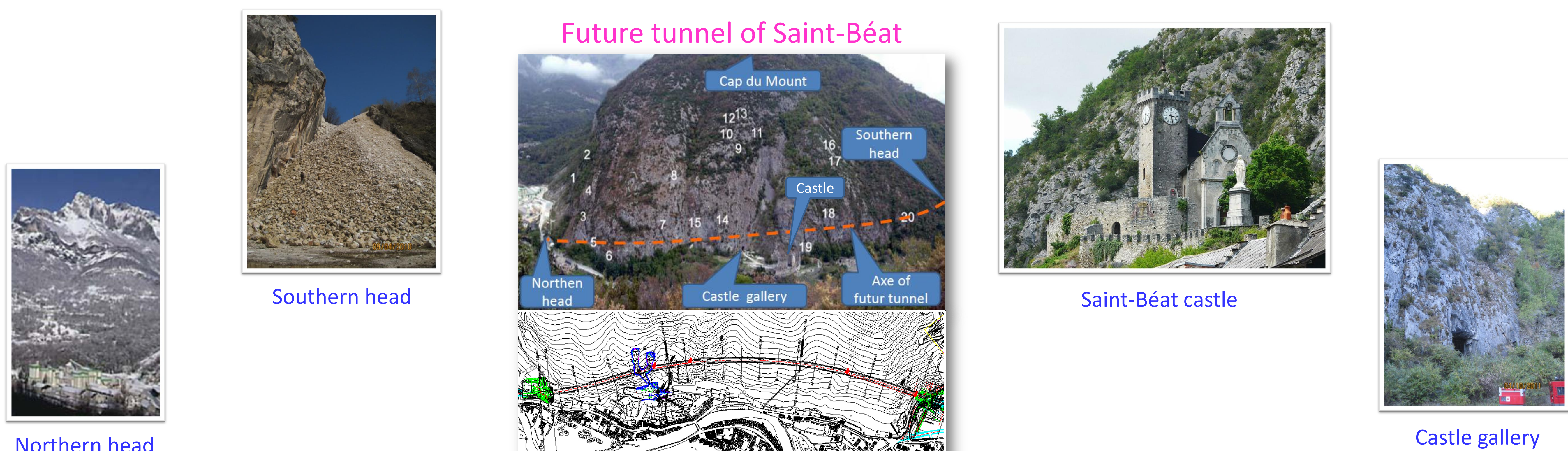
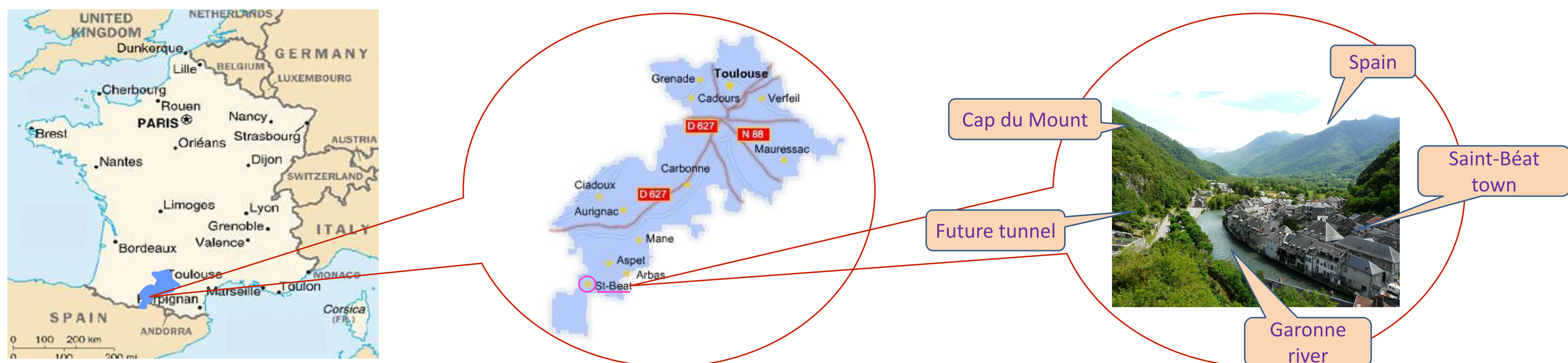


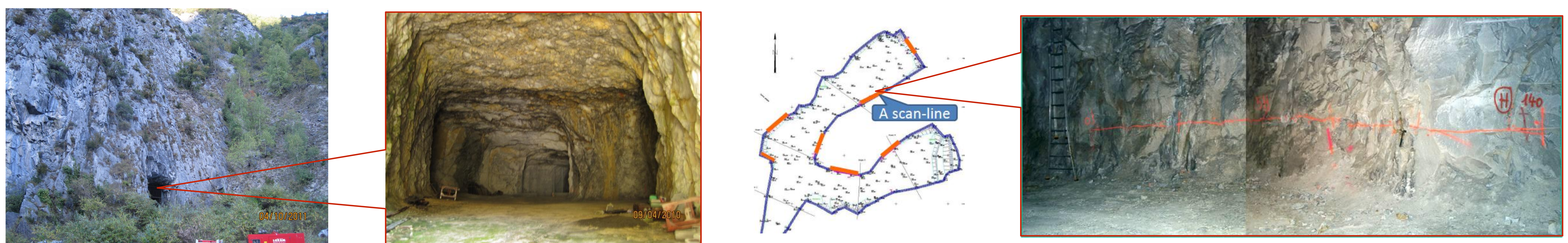
Methodology for tunnel excavation modelling in a fractured rock mass using a discrete element approach: Application to the Saint-Béat tunnel – France

Hang Tran^{1, 2}, Stéphanie Mahé³, Frédéric Dubois⁴, Marc Vinches⁵, Alain Chauvet⁶, Muriel Gasc-Barbier⁷
^{1,3,5} Alès School of Mines, Research Centre CMGD - France, ^{4,6} University of Montpellier 2 – France,
⁷ LRPC Toulouse – France, ² University of Transport and Communications - Vietnam

A new tunnel will be constructed in Saint Béat town, Haute Garonne department, France.



In situ surveys have been carried out in the castle gallery.



An alternative approach for fractured rock engineering has been proposed and applied for the first time in reality on the data of the castle gallery of Saint Béat.

