

## **Think2Impact™ - A Practical Application of Systems Science**

Stephen Hayes, Managing Director  
Complexity Solutions  
Australia

<http://www.concept.ntnu.no/english/>



*Think2Impact*

---

# A Practical Application of Systems Science

Better Governance

Initiating and managing projects

Identifying effective leverage points

Deepening community engagement

# Opportunities in designing and delivering effective programmes

---

- ❖ Defining **policy** and **performance** frameworks
- ❖ Ensuring projects reflect **national interests** and **priorities**
- ❖ Leveraging **development drivers**
- ❖ Delivering outcomes that are **innovative** and **impactful**
- ❖ Creating **sustainable growth**
- ❖ Identifying strategic partners and including all stakeholders
- ❖ Measuring **accountability, transparency** and **effectiveness** of programmes



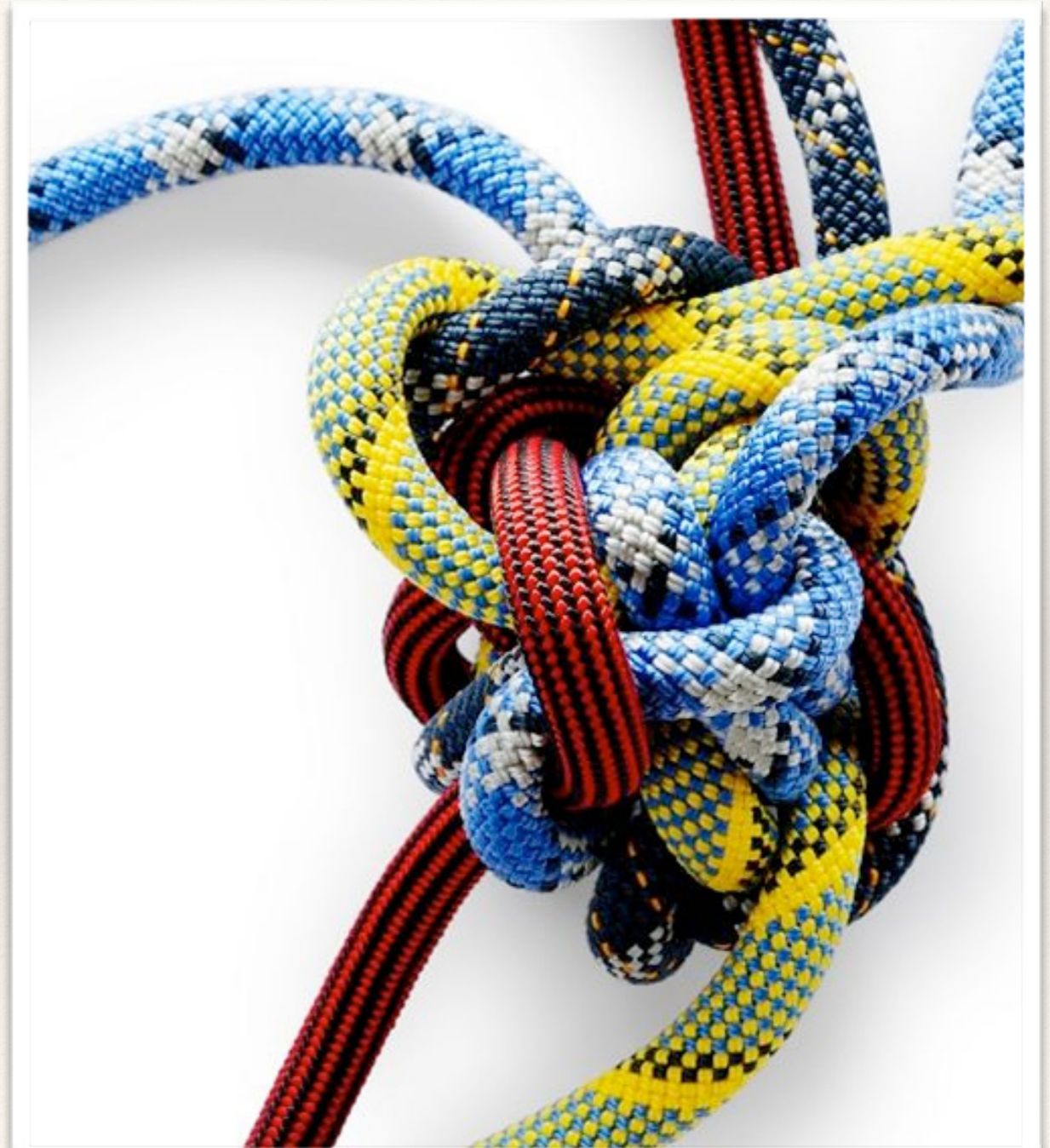
# Context - our world is complex

- ❖ We live in a **fragmented** and dynamically changing time characterised by rapid evolution and **uncertainty**.
- ❖ **We face:**
- ❖ Globalisation of economies
- ❖ Food safety and security
- ❖ Alleviation of poverty - improving quality of life
- ❖ Business & Organisational systems
- ❖ Sustaining & enhancing natural resources
- ❖ Population health
- ❖ Dealing with climate change
- ❖ Quality of life issues



# Complex problems

- ❖ Complex problems are **multidimensional, ambiguous, non-linear and interdependent** with **multiple stakeholders** who have **diverse agendas, objectives and backgrounds**
- ❖ **No quick fixes** or silver bullets for complex problems
- ❖ Solutions for complex problems must be inclusive and relevant with an eye on **sustainability and innovation**
- ❖ There is a need for a **different kind of intelligence** and knowledge base to deal with the challenges of complex problems



# Systems thinking

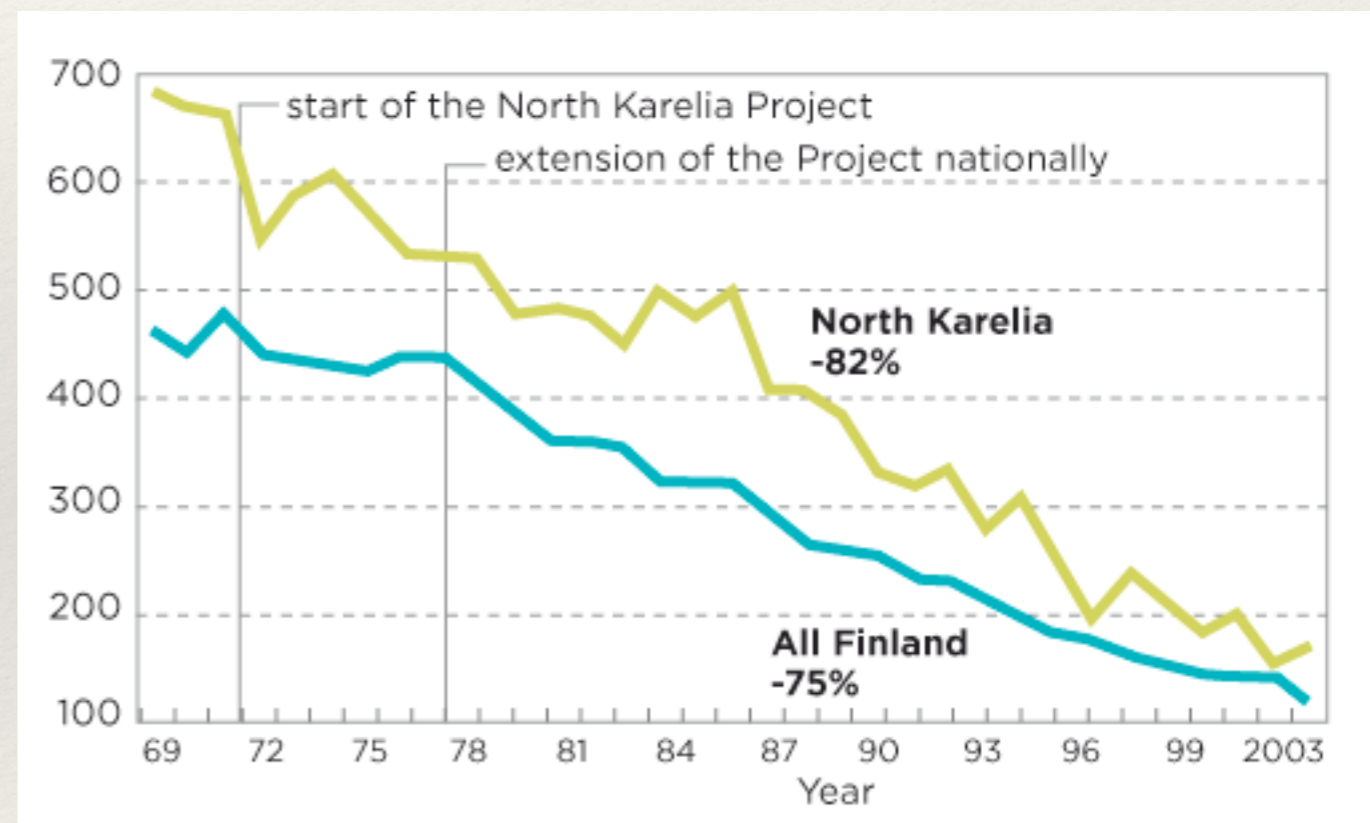
- ❖ Cuts through complexity
- ❖ Analyses a problem based on its various parts and their **interconnectedness**
- ❖ Synthesises perspectives from multiple stakeholders to build a **comprehensive big picture**
- ❖ Identifies symptoms, **root causes** and consequences
- ❖ Aims to resolve issues by affecting a change in mindset and **creating a new paradigm**



# Systems Thinking and Innovation

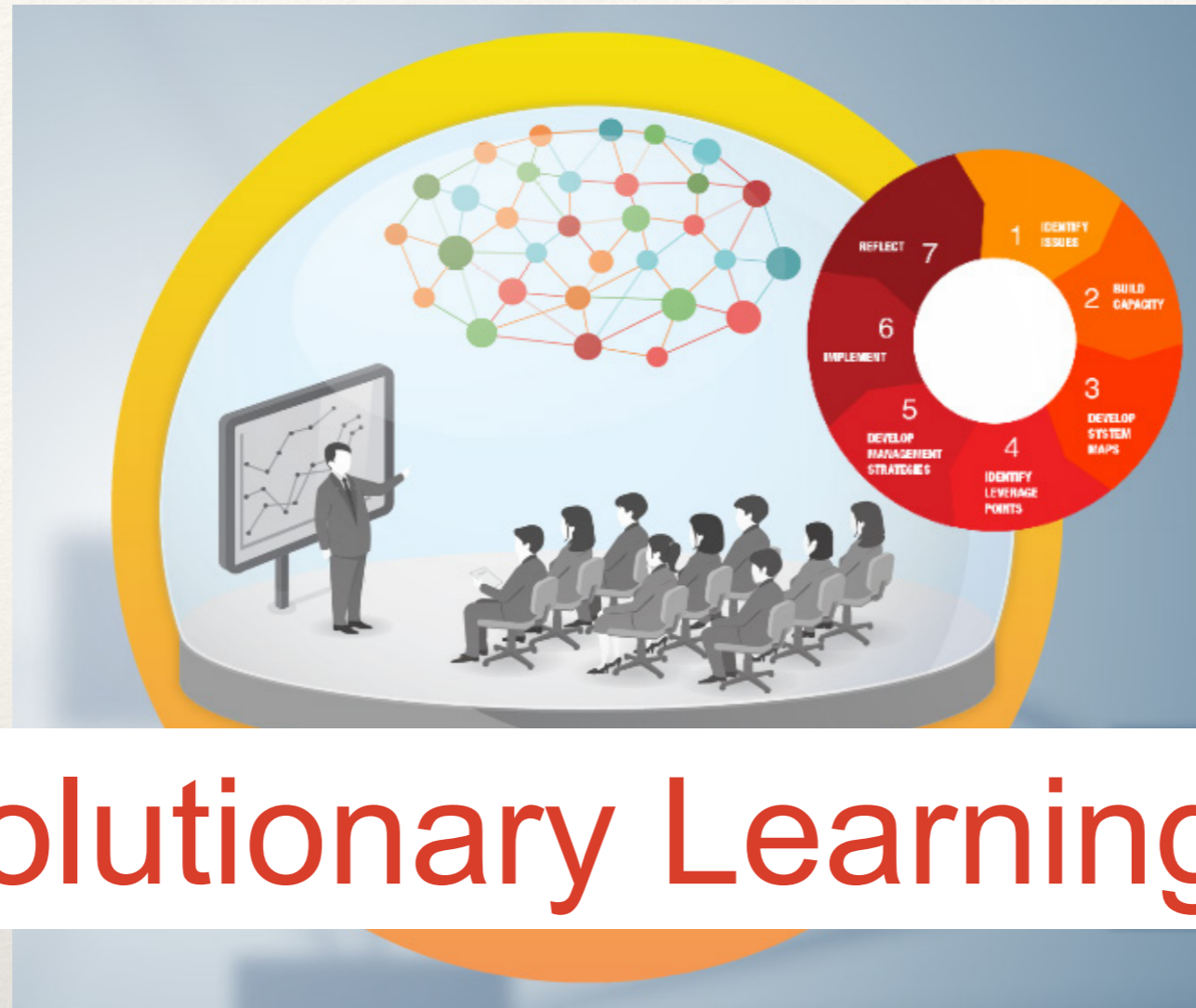
## ❖ The North Karelia Project, Finland

- ❖ In the early 1970's Finland had the highest Cardio Vascular Disease (CVD) mortality rate in the world. The North Karelia Project was started in 1972 as a national pilot and demonstration programme for CVD prevention.
- ❖ A collaboration between local authorities, people, experts and the government towards reducing heart disease
- ❖ An initiative that resulted in community based interventions
- ❖ Combining policy, science and behavioural change it led to the Karelia Health Service being reorganised around prevention
- ❖ Now used to demonstrate this pioneering practice all over Finland



# Evolutionary Learning Labs

Non linear problem solving to cut through  
complexity



# Evolutionary Learning Labs

- Non linear problem solving to cut through complexity
- A unique synergy of academic rigour and real world application of systems thinking
- A model that impacted problem solving in global contexts.
- Demonstrated success in different scenarios.

# The ELLabs

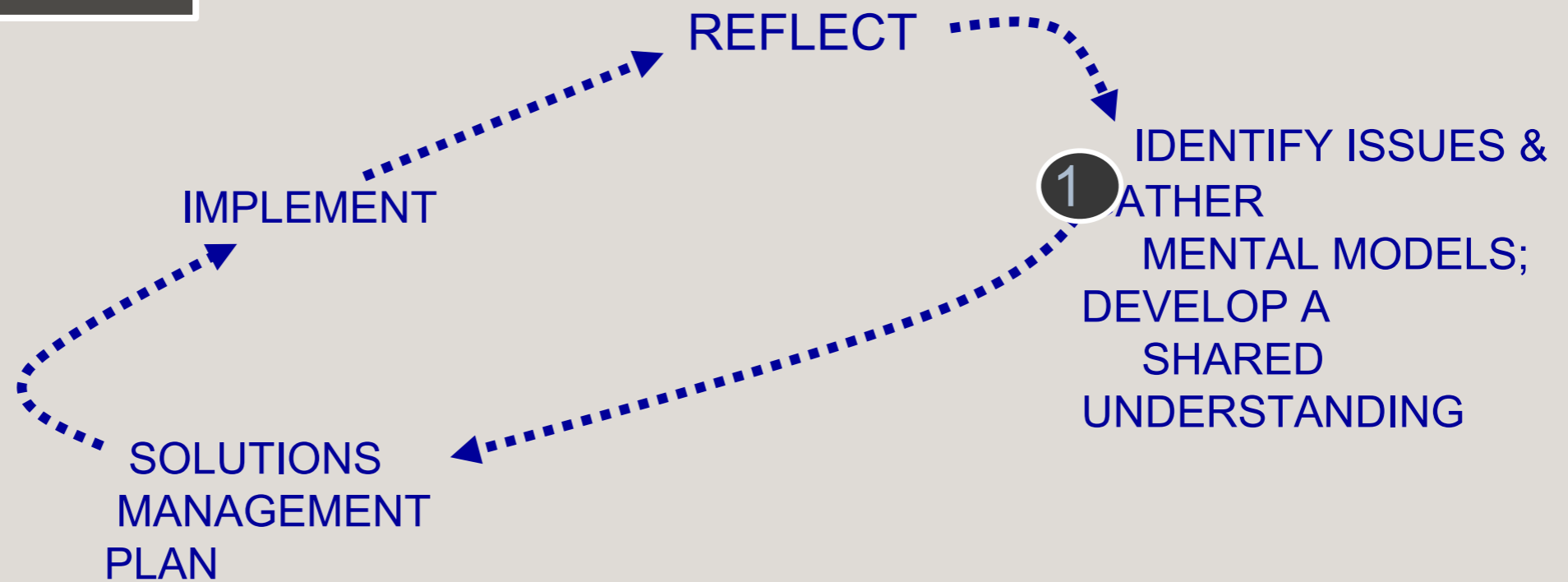
- ❖ The Evolutionary Learning Labs have a seven step systemic framework that has enabled people in diverse geographies **address complex multi-dimensional problems**



# How ELLabs work

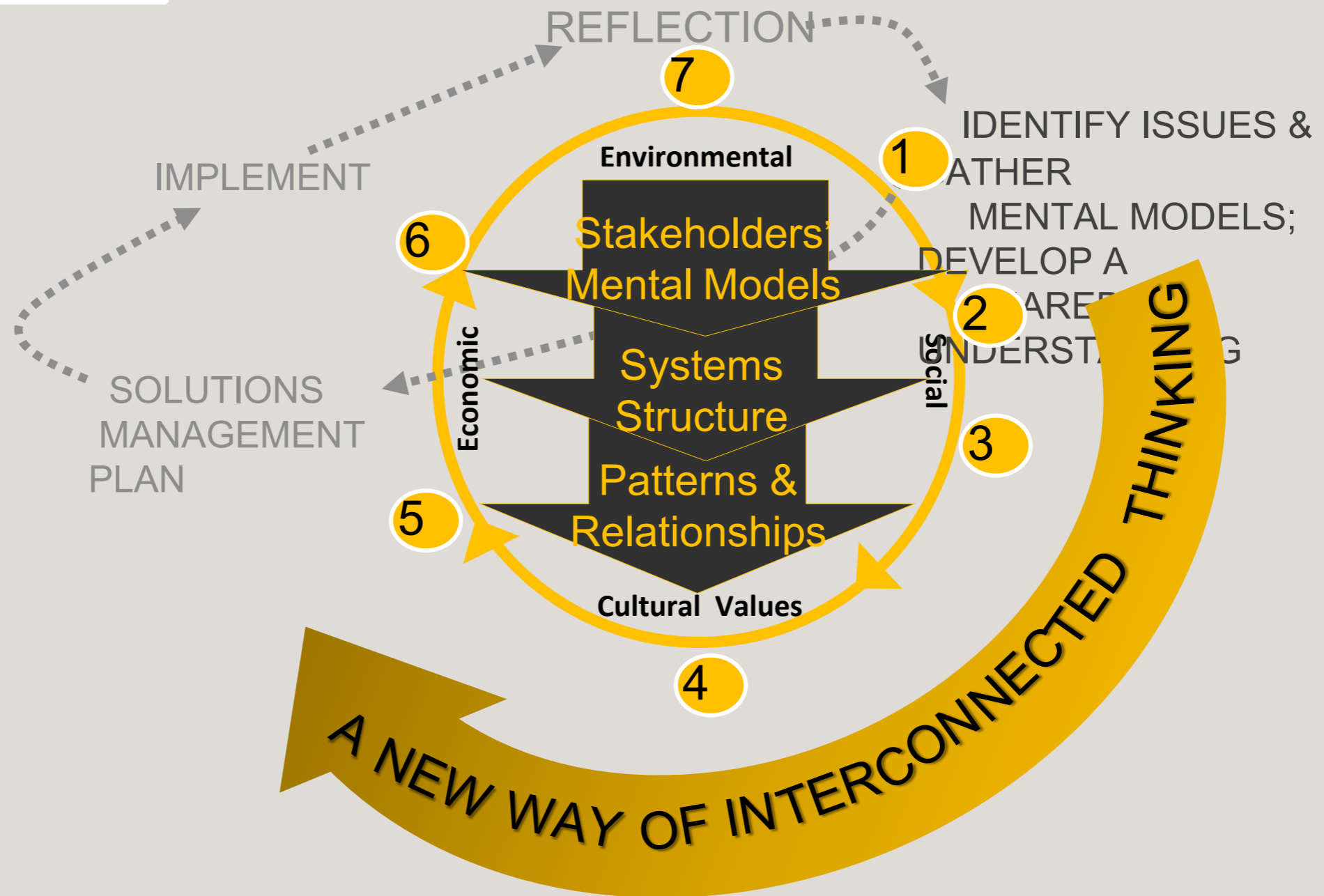


# TRADITIONAL THINKING





# EVOLUTIONARY LEARNING LABORATORY FOR MANAGING COMPLEX ISSUES, PROJECTS AND PROGRAMS



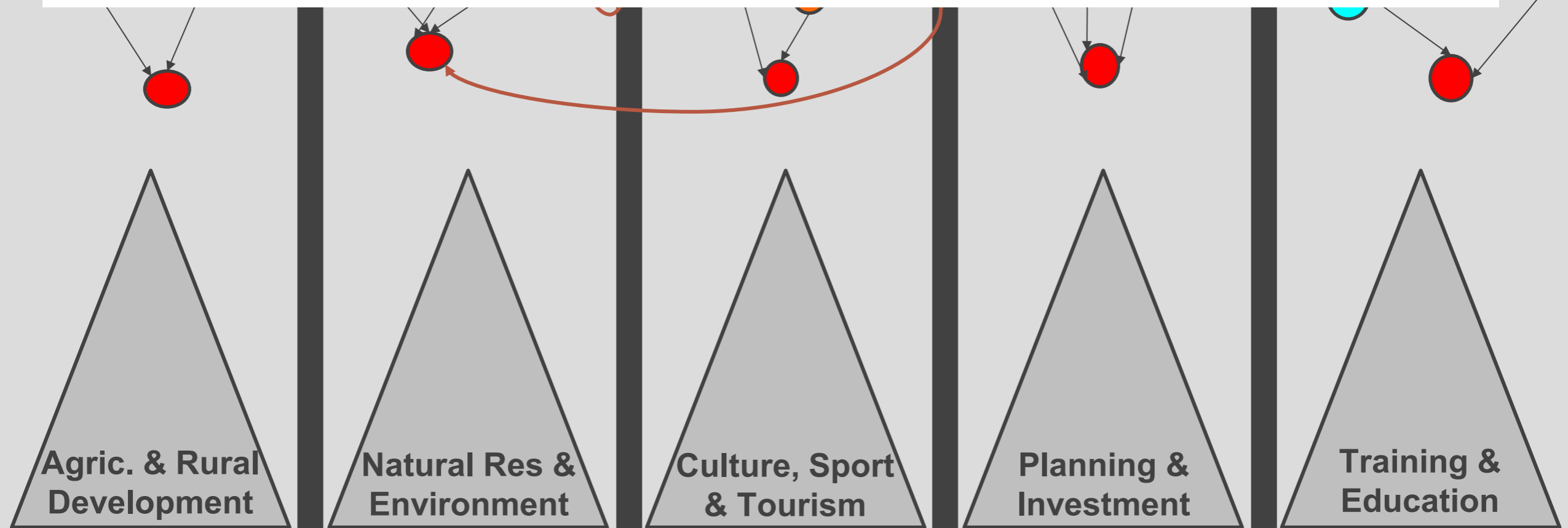
# Example - ELLab Application in Governance

Collaboration

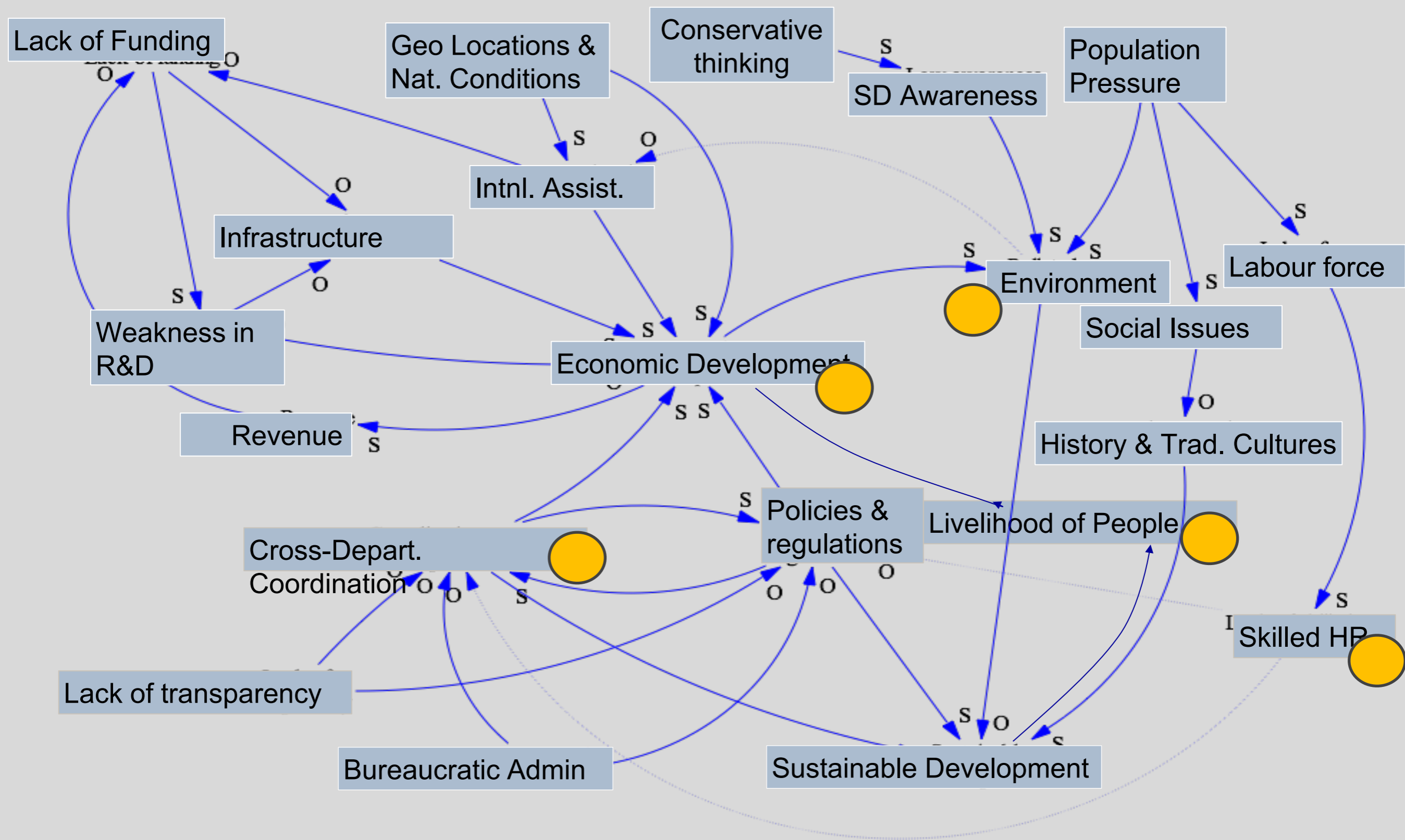
Sharing

## Integrated Systemic Master Plan for Governance

ans



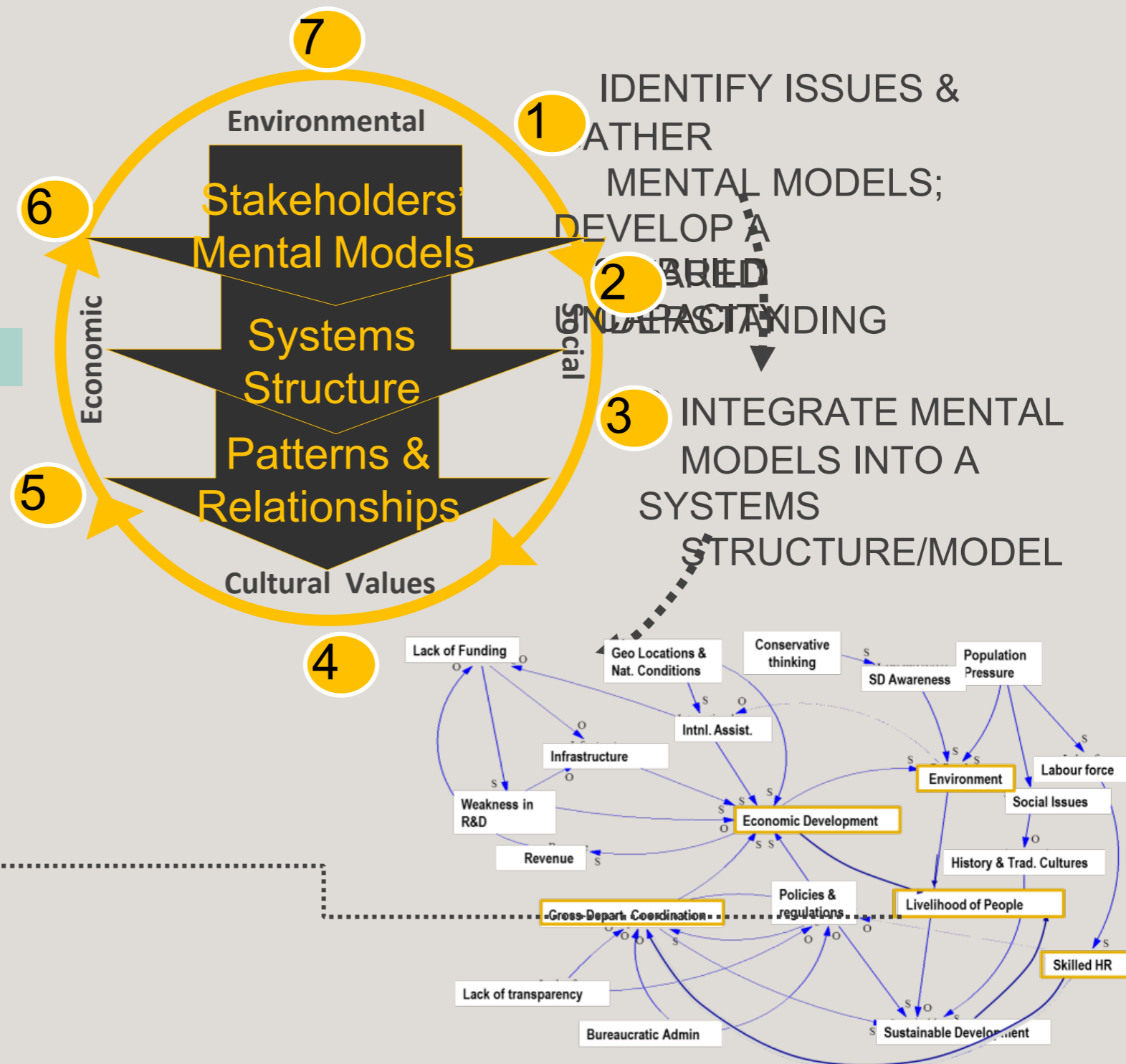
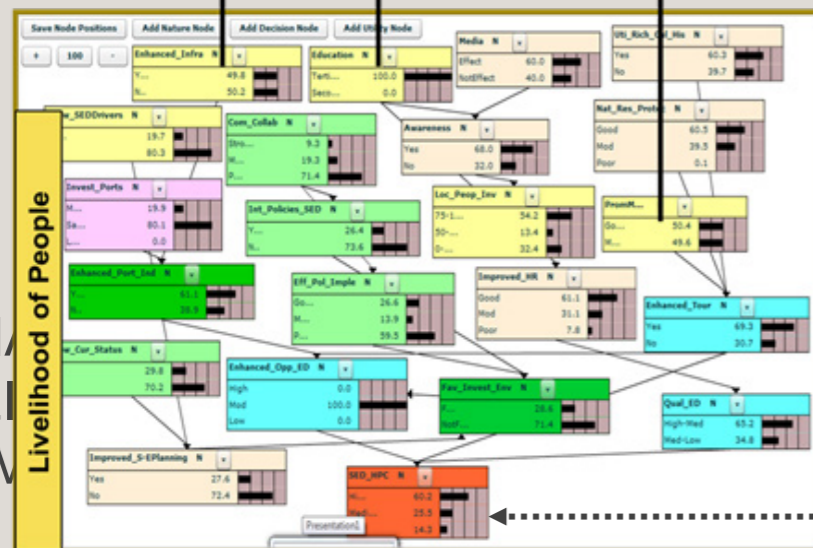
Departments of Haiphong Province, Vietnam





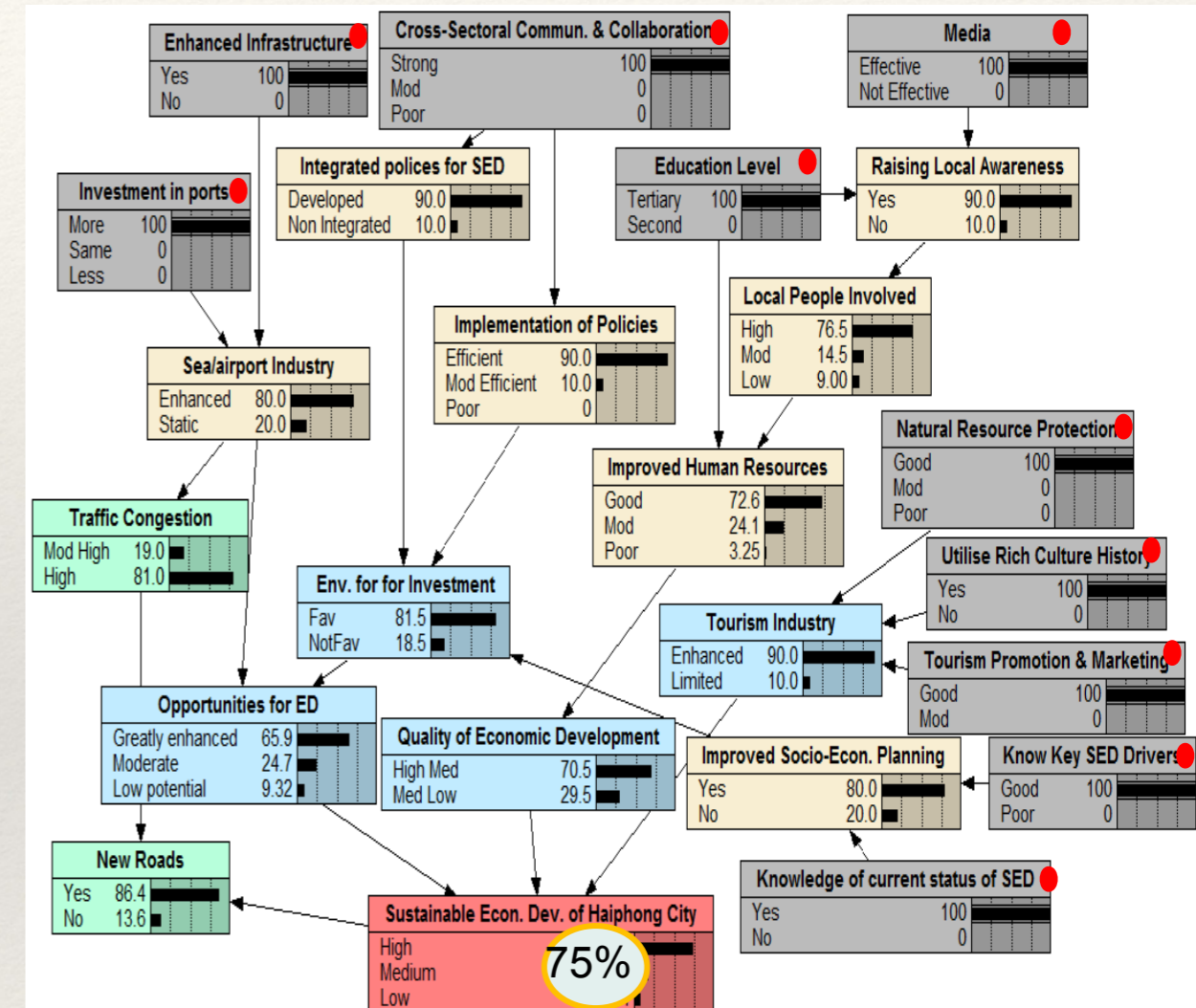
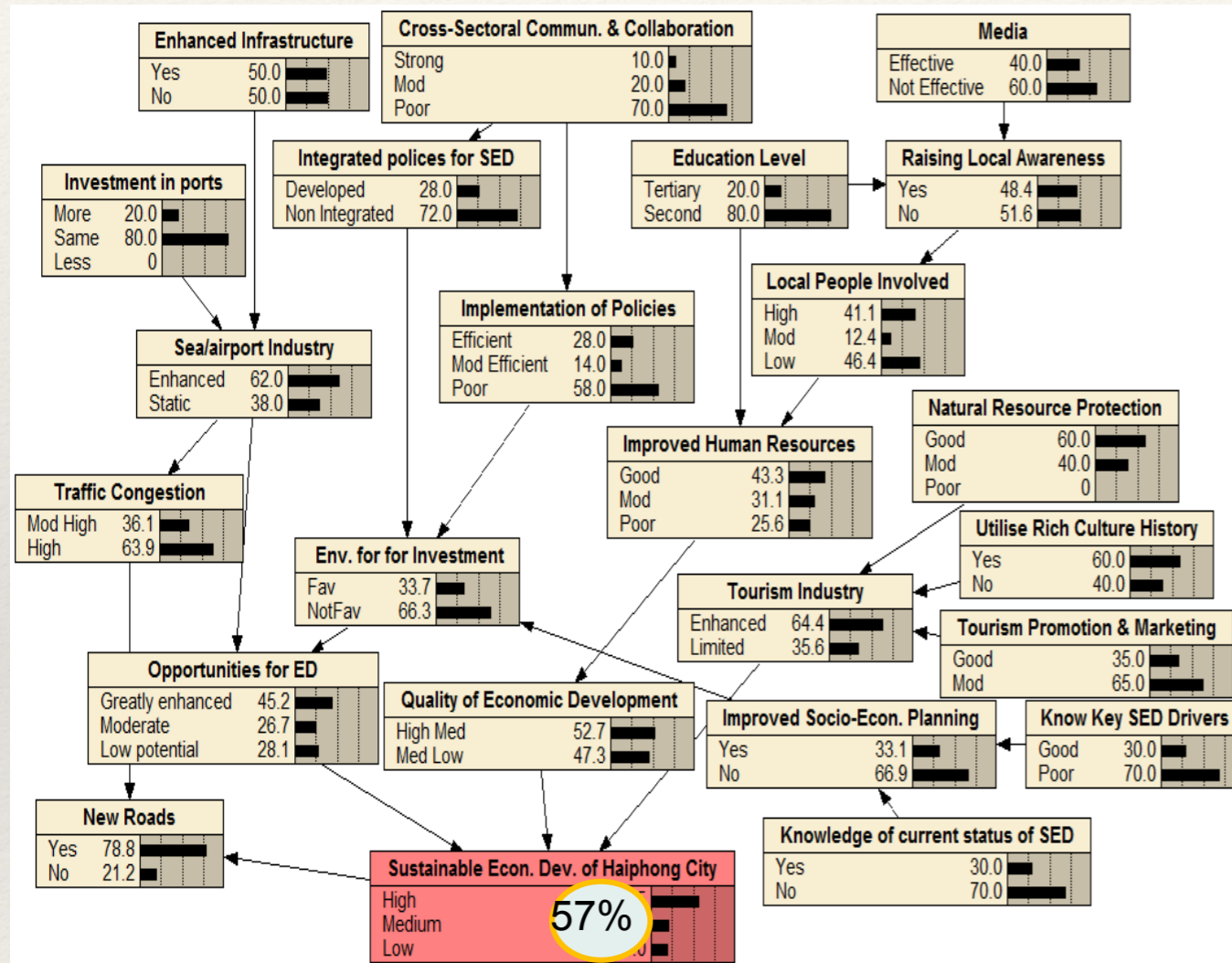
Identifying Long-term Systemic Interventions

BAYESIAN  
MODEL  
SYSTEM



# BAYESIAN BELIEF NETWORK MODELING

- Participatory Systems Analysis
- Easy to construct
- Link qualitative and quantitative
- Quantify uncertainties
- Easily updateable
- identify Systemic Interventions
- Useful for developing strategic and operational plans



Identified Systemic Interventions increasing the probability for high SED



# CO-LEARNING & NEW LEVELS OF PERFORMANCE

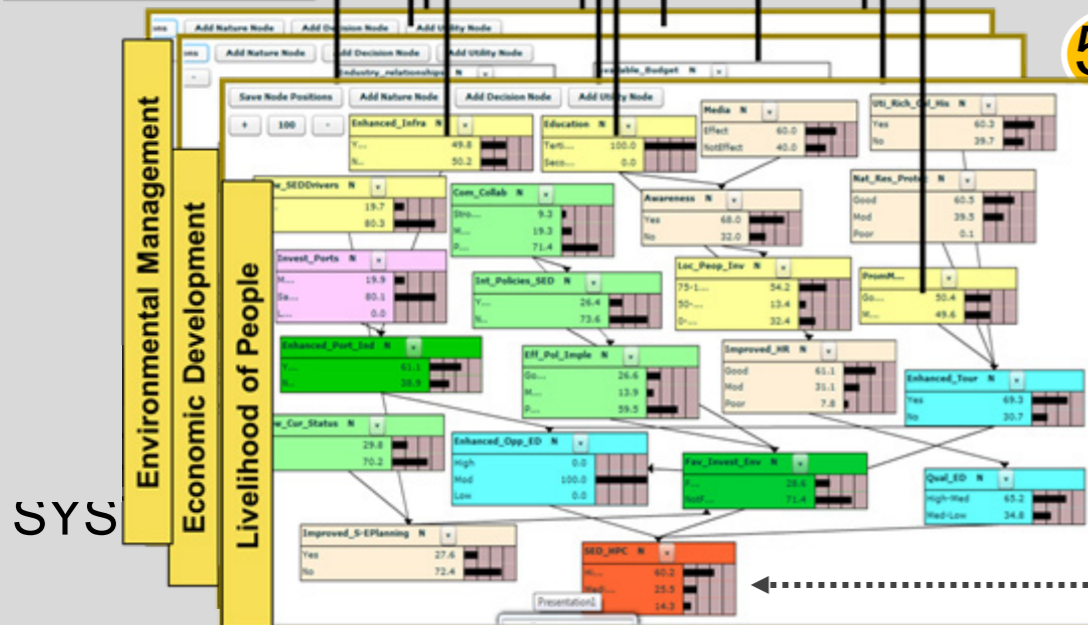


REFLECTION

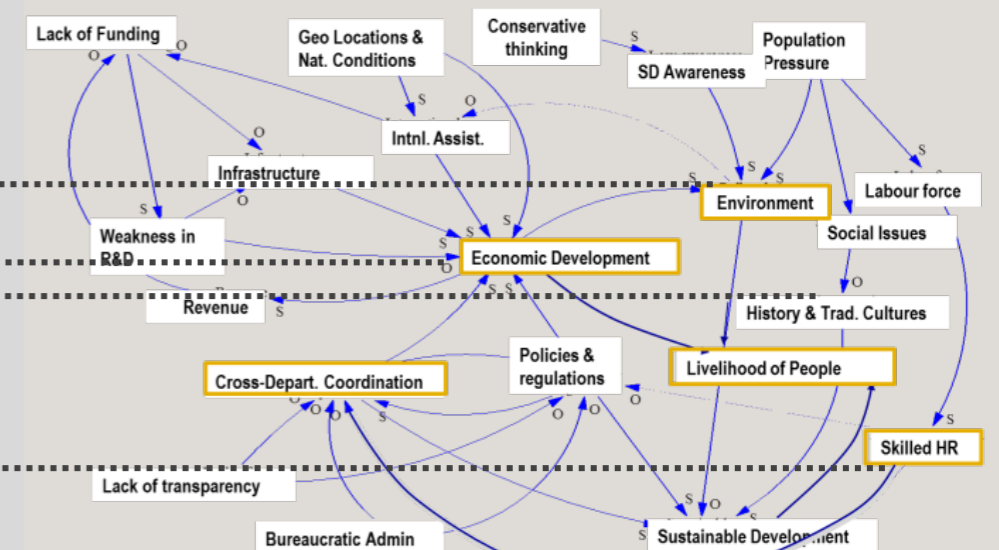
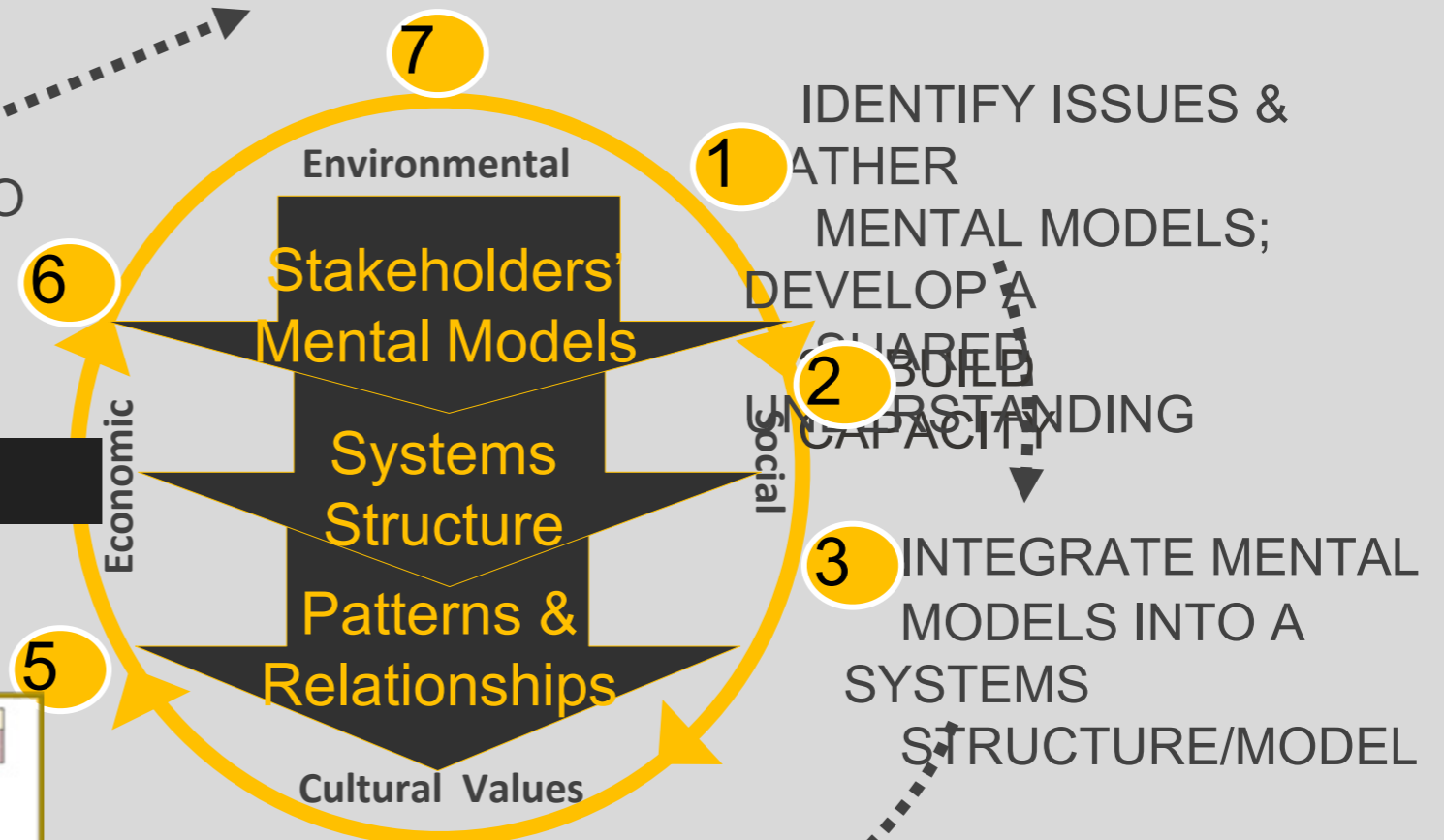
IMPLEMENTATION

## INTEGRATED LONGTERM SYSTEMIC MINOR INTERVENTIONS

collaboration



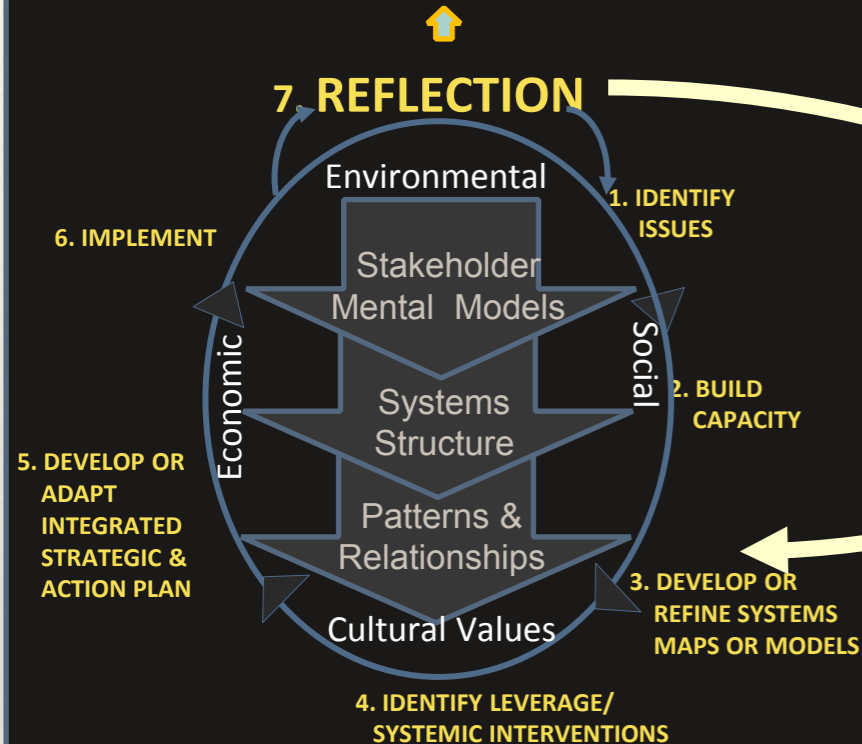
SYS



# LOCAL ELLABS EXTENDING WIDER

## Local ELLab

### New Levels of Learning and Performance at LOCAL Level



## Evolutionary Learning Laboratories

- Sustainable Development of UNESCO Cat Ba Biosphere, Vietnam
- Enhancing Systems Education
- Integrated Systemic Governance, Haiphong Province, Vietnam
- Improving Child Safety, Japan
- Labour Saving Innovations in Sub-Saharan Africa and South East Asia
- Systems Transformations, for Governance in Remote Areas of Australia
- Building Reputation of Systems design Graduate School, Keio University, Japan
- Economic Development of South Australia



### New Levels of Learning and Performance at GLOBAL, REGIONAL, CITY Level



### SHARING REFLECTIONS

Creating a collaborative learning environment

# Think2Impact

A global online platform for systems thinking, the Think2Impact platform facilitates **non-linear problem solving** aimed at **building sustainable solutions**

Based on the 7-step systemic framework of the **Evolutionary Learning Labs**, this approach has **successfully addressed complex problems in diverse global contexts**

It **brings together all the stakeholders** in a system (identifying even latent ones) to enable dialogue and **collaboration around a shared unified vision**

Uses the **collective knowledge** of everyone in the system to help evolve solutions

Promotes **higher degree of ownership over solutions** and implementation due to collaborative nature of problem solving

Helps understand critical issues within a system and **analyses interrelationships** between them to yield critical insights

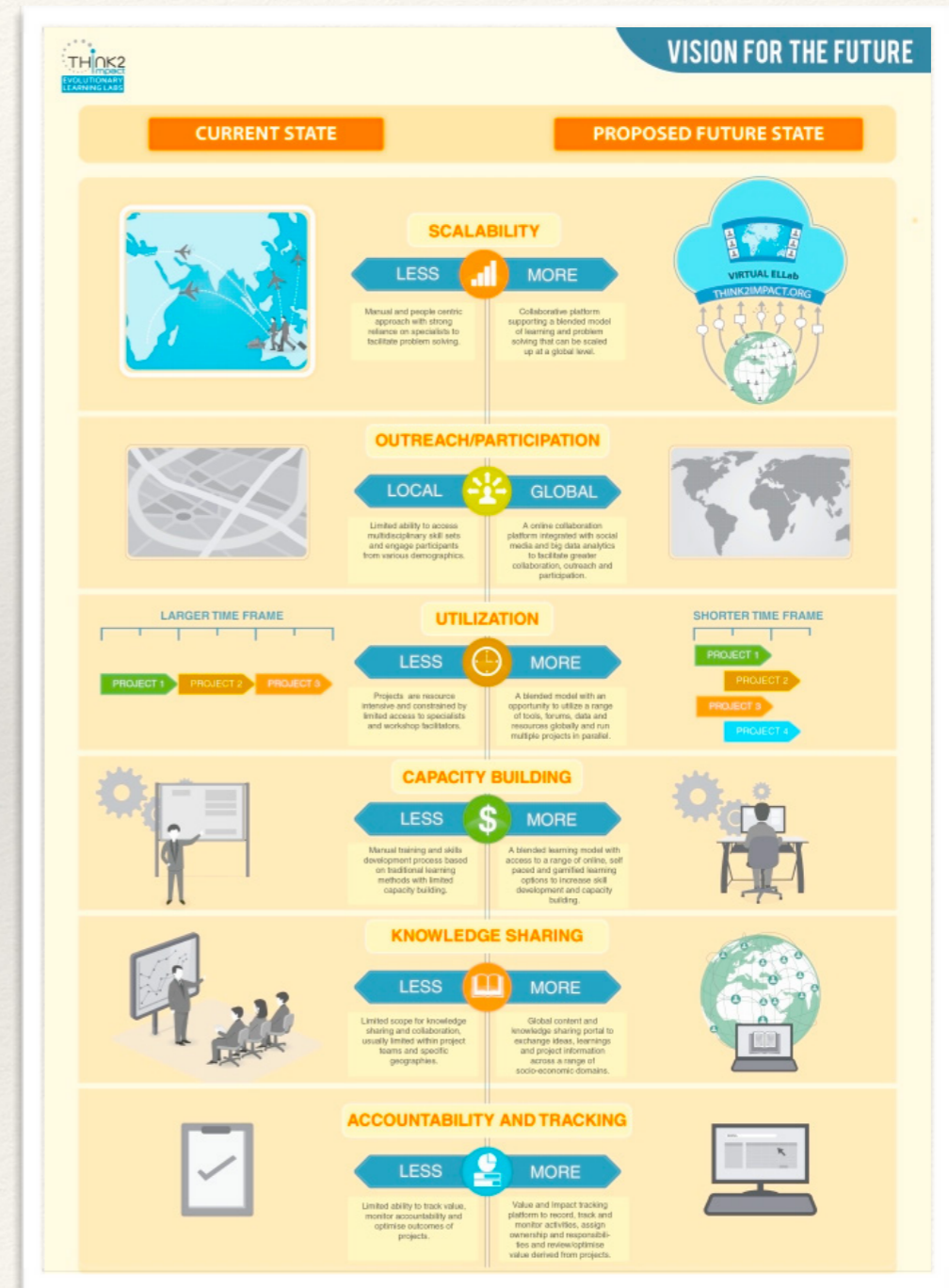
Identifies **leverage points** for systemic intervention

**Monitors and tracks systemic interventions** for impact and effectiveness

Promotes **transparency and accountability** within the system

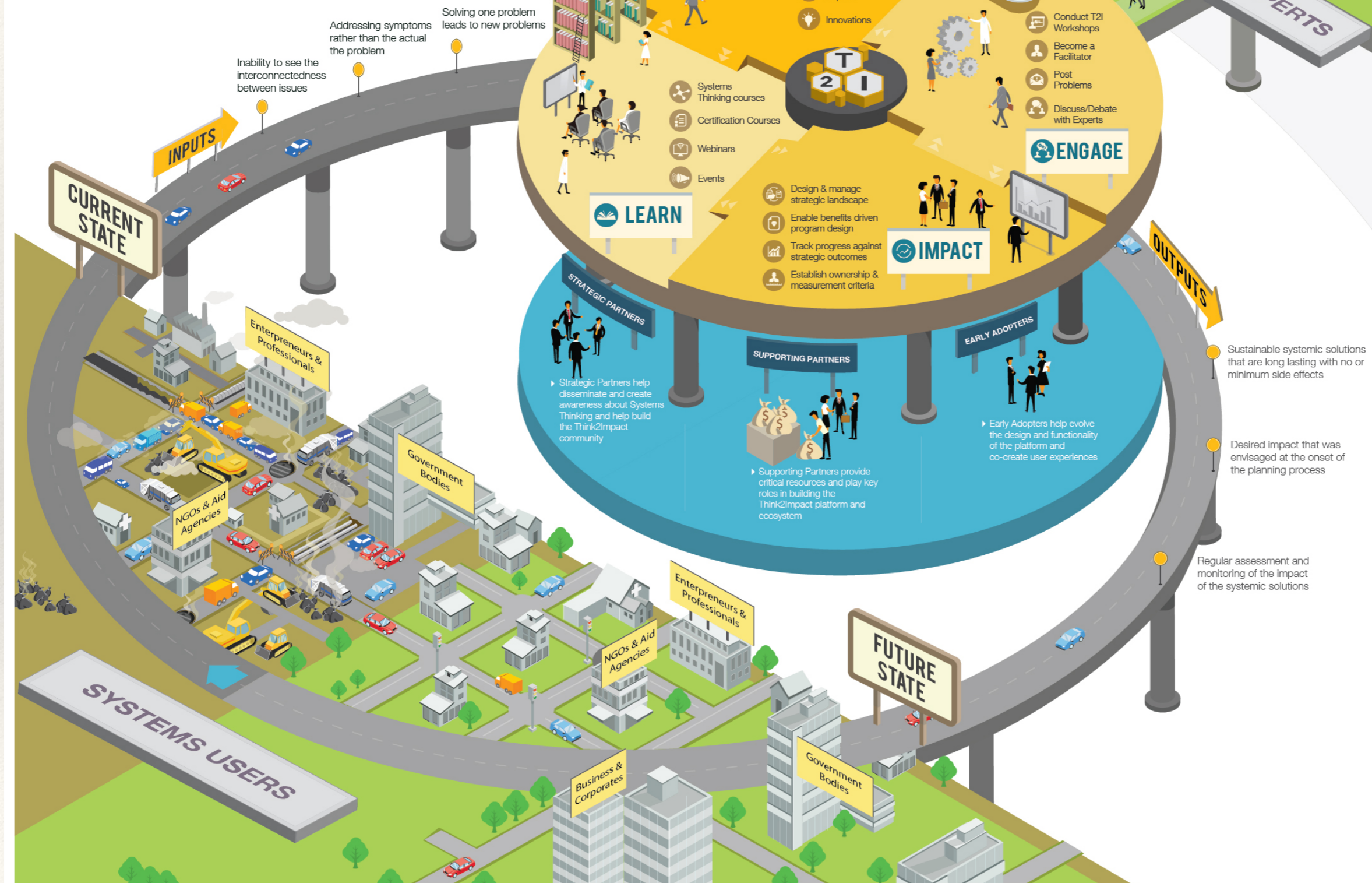
# The evolution of Think2Impact

- ❖ The need to take the systemic framework to a larger population of people and contexts
- ❖ Increase and diversify the collective global systems community
- ❖ Knowledge sharing
- ❖ Innovation focus
- ❖ Create an easily accessible systems hub with worldwide reach and global audience
- ❖ Improve accountability and enable tracking



# Think2Impact Ecosystem

THINK2IMPACT TAKES SYSTEMS THINKING TO GLOBAL COMMUNITIES AND ORGANISATIONS TO HELP SOLVE COMPLEX PROBLEMS



# The anatomy of Think2Impact





## ACCESS

*A repository of systems knowledge gathered and curated by the global systems community. Access project reports, case studies, research papers and journals. View innovations that have evolved from projects undertaken around the globe.*



*Project Reports*



*Case Studies*



*Research Papers*



*Innovations*





## LEARN

*New to Systems Thinking? Start with the basics and learn from the experts. The Think2Impact™ Academy guides you through a step-by-step process that helps you understand the systems framework and its application in diverse contexts.*



*Systems Thinking  
Courses*



*Certification  
Courses*



*Webinars*



*Events*





## ENGAGE

*Be a part of the action here at Think2Impact™. Start a new project, participate in conversations and collaborate with systems experts and users. Contribute to new knowledge creation or post a problem that needs systemic intervention.*



*Conduct  
Think2Impact™  
Workshops*



*Become a  
Facilitator*



*Post Problems*



*Discuss/Debate  
with Experts*



## IMPACT

*Achieve greater accountability at micro and macro levels with the ability to track the impact of systemic interventions against intended policy and strategic outcomes. Use impact tracker to drive informed decision-making and track/report against outcomes during and post implementation, to ensure optimal impact.*



*Design & manage Strategic Landscape*



*Enable benefits driven program design*



*Track progress against strategic outcomes*



*Establish ownership & measurement criteria*

---

[www.think2impact.org](http://www.think2impact.org)

---



[stephen@complexitysolutions.com.au](mailto:stephen@complexitysolutions.com.au)

or

[stephen@think2impact.com](mailto:stephen@think2impact.com)