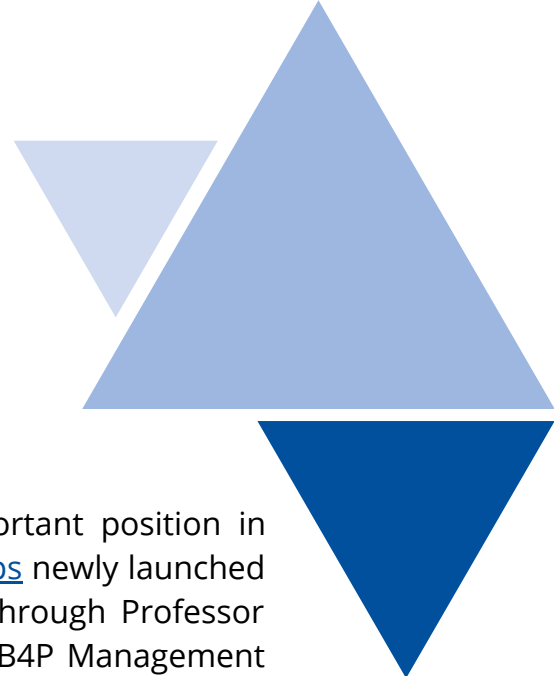


The background features a large, light blue triangle pointing upwards on the left and a large, dark blue triangle pointing downwards on the right. In the upper right corner, there is a photograph of two construction workers wearing red hard hats and safety glasses, looking at a set of blueprints. The text is positioned in the center-left area.

# NTNU ECTP FORUM

**CREATING THE NTNU EXPERTS  
FORUM FOR THE  
CONSTRUCTION SECTOR**





## Introduction

Towards the end of 2021, NTNU achieved an important position in Built4People (B4P), one of the 48 [Strategic Partnerships](#) newly launched under Horizon Europe. NTNU, is now represented through Professor Rolf André Bohne. He is currently a member of the B4P Management Board.

This position represents an important strategic opportunity for NTNU to impact defining challenges and topics for future calls for proposals related to the construction sector to be published under the framework of Horizon Europe.

To maximize this opportunity and fully benefit from this positioning for the Construction Research environments at NTNU as a whole and valorize the multidisciplinary impact capability the University has within its faculties, an internal Forum is created: the NTNU ECTP Forum. The Forum is part of the set of NTNU Fora that are being created to guarantee maximum impact and internal engagement on strategic positionings achieved by NTNU at European Level.

The coordination of the Forum is granted by IV Faculty (through IBM department direct engagement and administrative investment) in collaboration with NTNU Brussels office. The Governance is benefiting by the direct participation of AD Faculty representatives in the Steering Committee and we expect it to possibly welcome other faculties into it, in line with the “One NTNU” approach.

## The Forum Model

The Forum Model is an approach proposed by the NTNU Brussels office to manage the European Positionings NTNU achieves within relevant strategic initiatives with particular reference to those related to Horizon Europe (such as the Strategic Partnerships).

The model (described in the document [STRATEGIC PARTNERSHIPS IN HORIZON EUROPE – NTNU](#)) has received the support of and have been adopted by NTNUs Deans and the Vice Deans for Research as the methodology to manage achieved European positionings. Moreover, it coincides well with the “One NTNU” strategy.

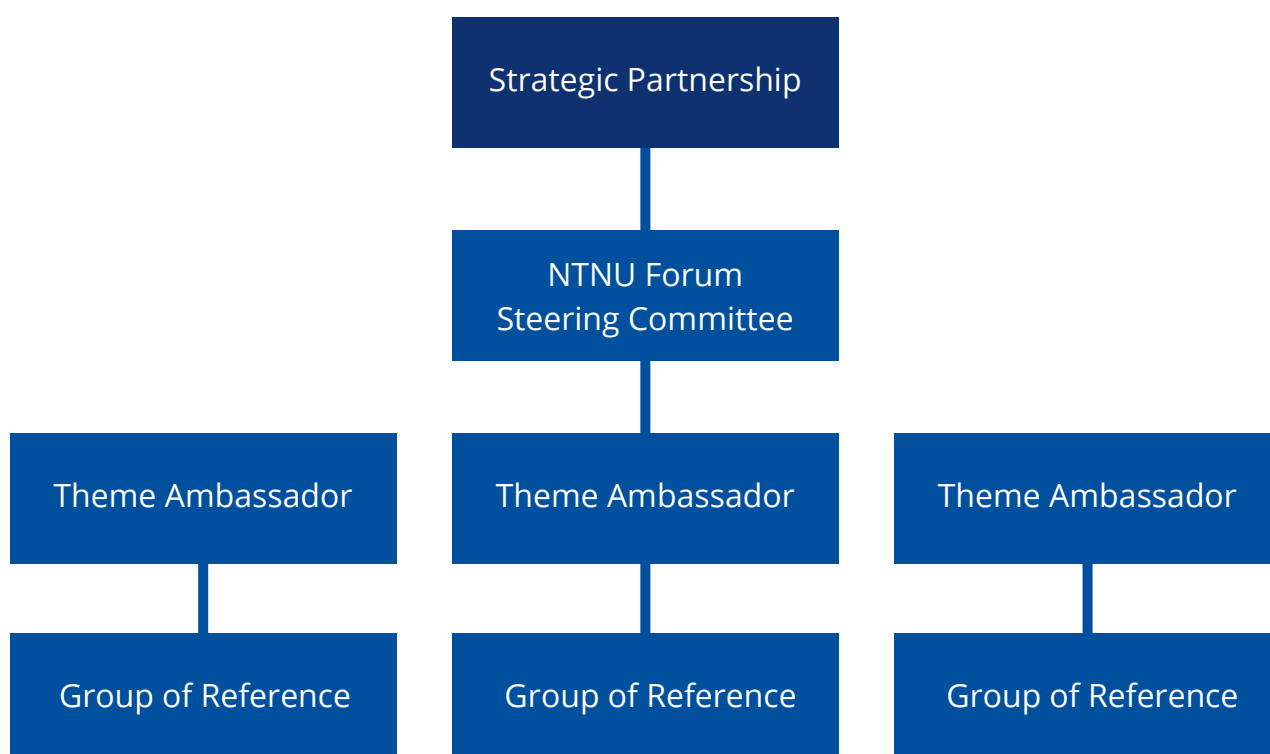


Successfully tested in the NTNU Food Forum, the Forum model consists of the identification of “NTNU Ambassadors” that are expected to represent NTNU and, where possible, take on the roles of being doors of opportunities created within the platforms they operate in.

When consultations regarding priorities are under discussion, it is important that the forum ambassadors can provide multidisciplinary channels for inputs in order to maximize NTNU's influence on the final shaping of the calls.

To enable this, the Forum, consists of internal Groups of References (GORs) created to link the Ambassadors with colleagues. The GORs constitute groups of Professors/Researchers collectively interested in the sector the Forum refers to.

The forum provides the GOR members a channel to be kept up to date regarding opportunities and strategic approaches that are defined through the initiative the Forum is linked to. The members provide a source of knowledge ready to provide inputs to the Ambassadors when consultations to define future priorities for funding are launched.





## The NTNU ECTP Forum

In the Construction Sector, the B4P is nurtured by the [European Construction Technology Platform \(ECTP\)](#), which is structured in 6 thematic committees:

- Active Aging and Design
- Digital Built Environment
- Energy Efficient Buildings
- Heritage and Regeneration
- Infrastructure and Mobility
- Materials and Sustainability

The NTNU ECTP Forum is organized around these 6 themes which are expected to be managed by one NTNU Ambassador each linked to the respective GOR.

The coordination of the whole forum is granted by a Forum Secretariat composed by:

- Rolf Andre Bohne, Professor IV-IBM
- Sonja Marie Ekrann Hammer, Research Advisor IV-IBM
- Massimo Busuoli, Head of NTNU Brussels Office

The Forum has already identified some of its Ambassadors that accepted to represent NTNU in 4 of the ECTP working groups listed above:

- Lizhen Huang, Associate Professor
- Arild Gustavsen, Professor and Head of Department
- Niki Gaitani, Associate Professor
- Inge Hoff, Professor
- Rao Martand Singh, Professor
- Rolf André Bohne, Professor
- Jochen Köhler, Professor

Two Ambassadors are still to be identified so to finalise the Forum structure that can be visualized as followed on the next page.



## The NTNU ECTP Forum



### NTNU ECTP FORUM

#### Organizational Secretariat



**Rolf André Bohne**  
Professor  
Department of Civil and Environmental  
Engineering



**Massimo Busuoli**  
Director  
NTNU Brussels Office



**Sonja M. E. Hammer**  
EU Research Advisor  
Department of Civil and Environmental  
Engineering

#### Steering Group

**WG1 Active  
Aging & Design**

**Ambassador**

**WG2 Digital  
Built  
Environment**

**Ambassador**



**Lizhen  
Huang**

**WG3 Energy  
Efficient  
Buildings**

**Ambassador**



**Arild  
Gustavsen**



**Niki  
Gaitani**

**WG4 Heritage  
& Regeneration**

**Ambassador**

**WG5  
Infrastructure  
& Mobility**

**Ambassador**



**Inge  
Hoff**



**Rao  
Martand  
Singh**

**WG6 Materials  
&  
Sustainability**

**Ambassador**



**Rolf  
André  
Bohne**



**Jochen  
Köhler**

**Group of  
Reference**

**Group of  
Reference**

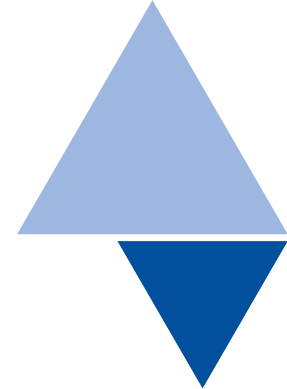
**Group of  
Reference**

**Group of  
Reference**

**Group of  
Reference**

**Group of  
Reference**

**WG 1 - 6 Members across NTNU**



## Joining the Forum – What is in for me?

As said, multi-disciplinarity is a crucial aspect to maximize the impact NTNU can provide at the EU level in the Construction sector.

Therefore, all professors and researchers from all faculties, with expertise linked to one or more of the Construction themes listed above are invited to join.

## What will you get?

- Anticipatory information service on the calls to come
- Networking and collaboration opportunities for possible European Projects generated in the B4P framework
- Possibility to contribute to the shaping of the future priorities reflecting your expertise views and research strategies

## What you will have to provide?

- Active attention to the information that will flow from Europe to the Forum organized in a specific Teams Channel
- Willingness and availability to provide inputs when needed and if possible

Please note that this is not a continuous engagement as it will be based on “sinusoidal” behaviors that will depend on the calls definition agenda or on the activities that will be organized in the framework of the B4P.



## NTNU ECTP Forum Launch Event

**The registered forum members will be invited to a launch event of the forum currently planned for March 9th, 2022 (12:00-13:00 lunch / 13:00-15:00 launch) in Trondheim.**

## How can I join?

Should you like to join, you are kindly requested to click on the link below and fill in the form in which you indicate your areas of expertise and interest in the committees. You will then be inserted in the thematic group(s) of reference of your interest.

Through them, you will achieve access to information about opportunities and priorities in the Construction sector coming from Horizon Europe specific calls.

As mentioned, your expertise will then be exploited to build NTNU inputs to the definition of future calls for proposals of the construction sector.

[Form to fill in to register your interest](#) in the NTNU ECTP Forum.

## More information?

For more information and clarifications, you are welcome to contact one of the members of the Organizational Secretariat:



**Rolf André Bohne**

Professor IV-IBM

[rolf.bohne@ntnu.no](mailto:rolf.bohne@ntnu.no)



**Sonja Marie Ekrann Hammer**

Research Advisor IV-IBM

[sonja.hammer@ntnu.no](mailto:sonja.hammer@ntnu.no)



**Massimo Busuoli**

Head of NTNU Brussels Office

[massimo.busuoli@ntnu.no](mailto:massimo.busuoli@ntnu.no)