

# EPILOG Laser Helix

The Software and Laser Cutter User Guide



## WARNINGS

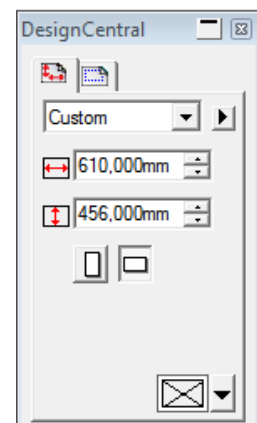
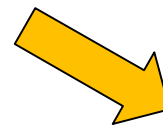
- Do not proceed to use the Laser Cutter if you have any doubts after reading this manual, ask the FabLab staff before doing anything.
- If you notice that the Laser Cutter is broken or is not working properly, do not try to fix it, report what is happening to the staff, they will help you to solve the problem.

1. Open FlexiDesigner software on desktop...



...on the right corner in the DesignCentral window enter below numbers:

2. Go to File > Import...  
...import your file (dxf, ai...)

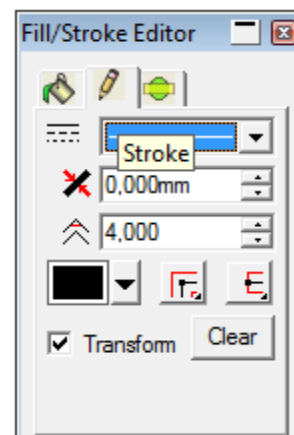
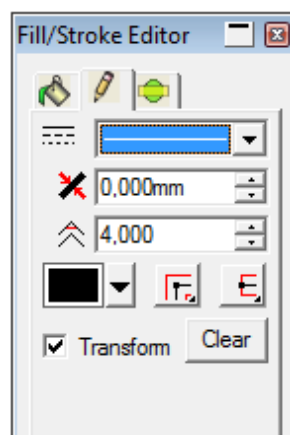
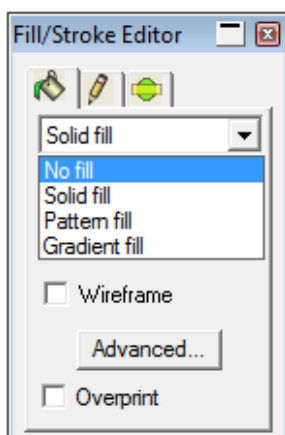


3. Put the rectangular in right upper corner of the Epilog laser machine with some margin...

...(!) BE SURE that your dimensions in the file are smaller than the plate size dimension and you have nested your files correctly.

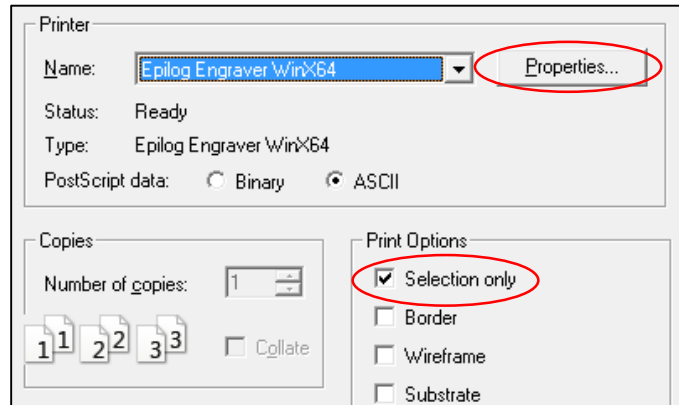
\*It is recommended to always draw a rectangular with same size of plate in the machine, in order not to violate the plate size.

4. After creating rectangle for CUTTING in the Fill/Stroke window editor select “No fill” and in stroke tab select a **Line**. Set “Stroke” width to zero (0):



5. Now with “**Select**” tool select your model you can **rotate**, **increase the size**, etc. in the upper-right corner in **DesignCentral window**.

6. Press “**Print**” button and tick “**Selection only**” and then press “**Properties**”.

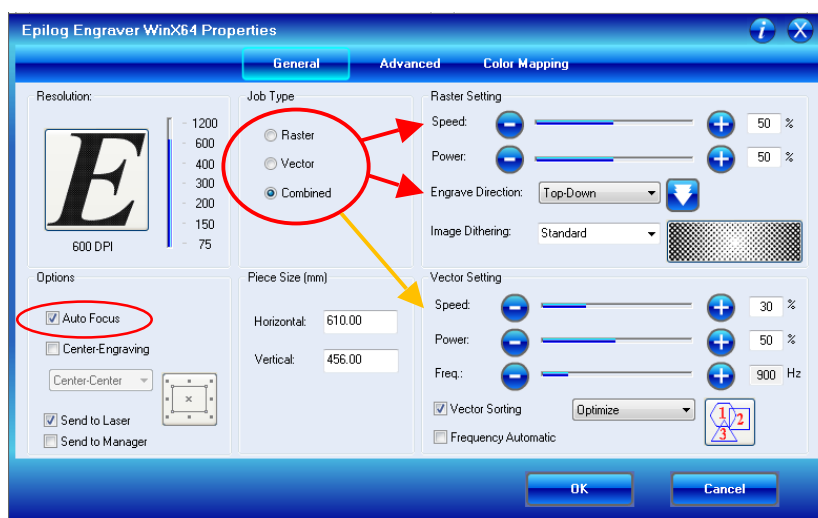


7. Change **Speed**, **Power** and **Frequency** according to the **MANUAL** and **MATERIAL**, provided near Laser machine for different operation.

**JOB TYPE:**

**Vector** - only for cutting , **Raster** - only engraving or **Combined** .

Select Auto focus.



8. Press “**OK**” and “**Print**” – the job will be send to the Epilog Laser Cutter

9. When the job is observed in Epilog press “**GO**”



**...enjoy your result and continue to be creative!**