

# Karolinska Institutet



**Karolinska  
Institutet**

A Medical University

Founded in December 1810

Today with two main campuses

- Solna and Flemingsberg

22 Departments

85 % Research

15 % Education

Total costs 2018 7 100 million SEK

Premises costs 1 020 million SEK 14 %

Total rented area 240 000 sqm



**Lennart Ilke**

Fastighetsdirektör  
Facilities Director  
2014 – 2019

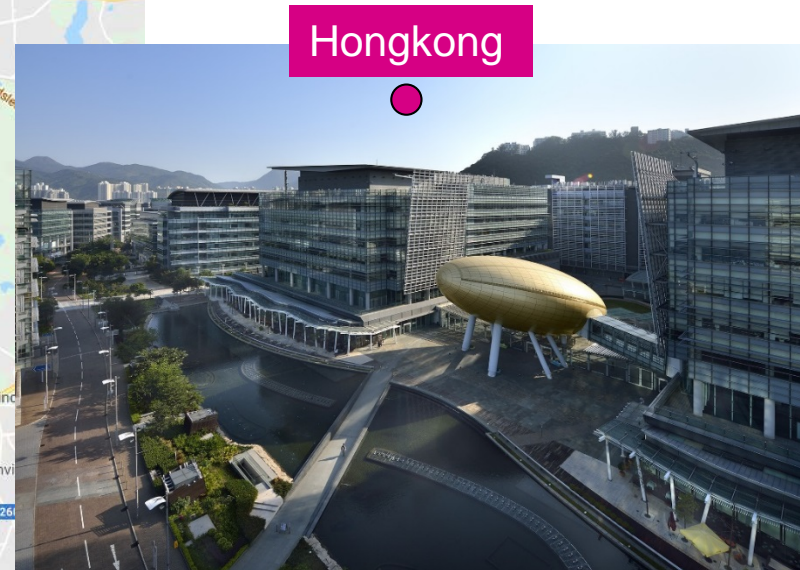
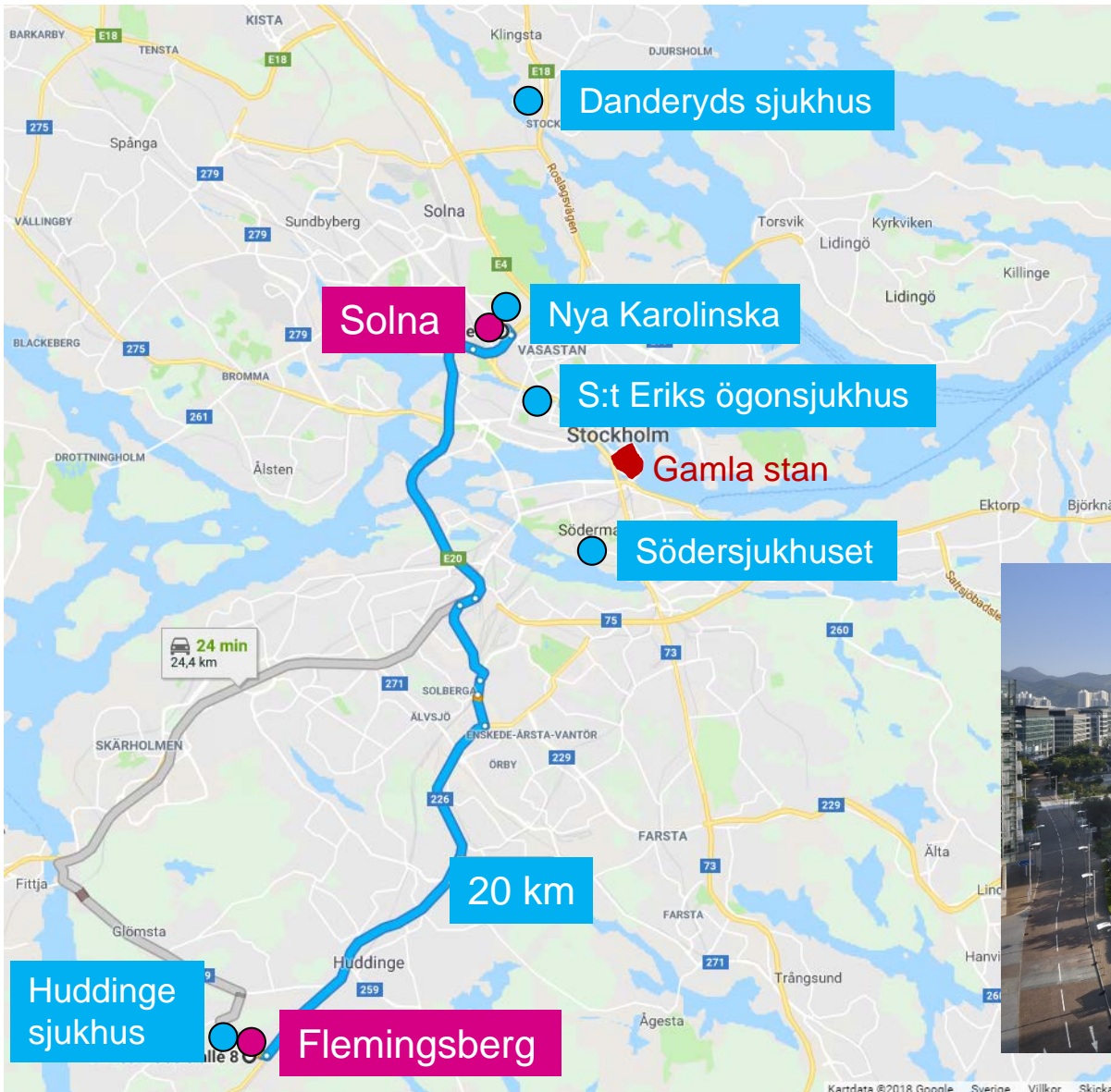
Uppsala University  
1997 – 2014

Project engineer  
1974 – 1997

# KI Campus Location



Karolinska  
Institutet





**Karolinska  
Institutet**

# Two campuses

## Campus Solna

Approximately:  
2/3 of the premises  
1/3 of the students

## Campus Flemingsberg

Approximately:  
1/3 of the premises  
2/3 of the students

## The total

240 000 sqm premises  
> 6 000 students



# Plans and plans

## Varying focus

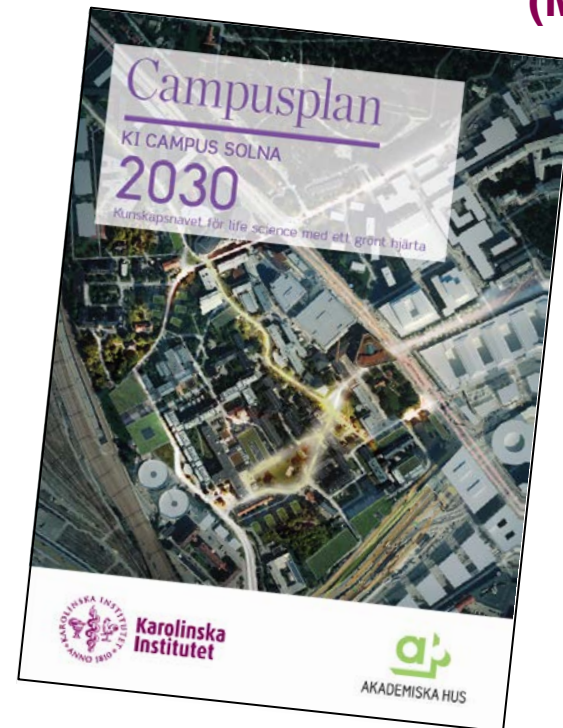


Karolinska  
Institutet

### KI Strategic Premises Plan



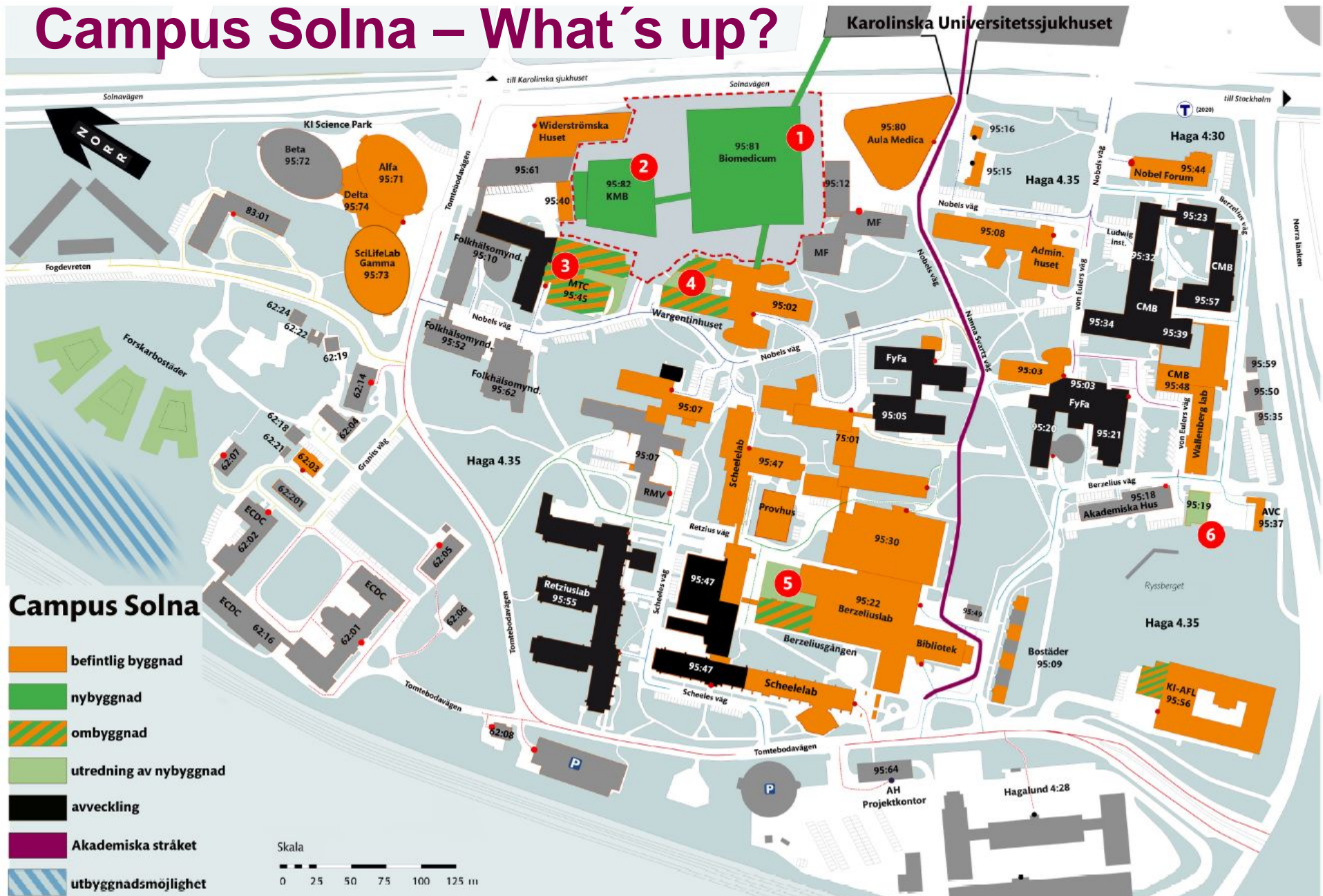
### Campus Plan Solna 2030 (May 2017)



- KI:s needs regarding premises
- Projects, costs, timelines

- Long-term development plan
- Akademiska Hus and KI in close cooperation with KI

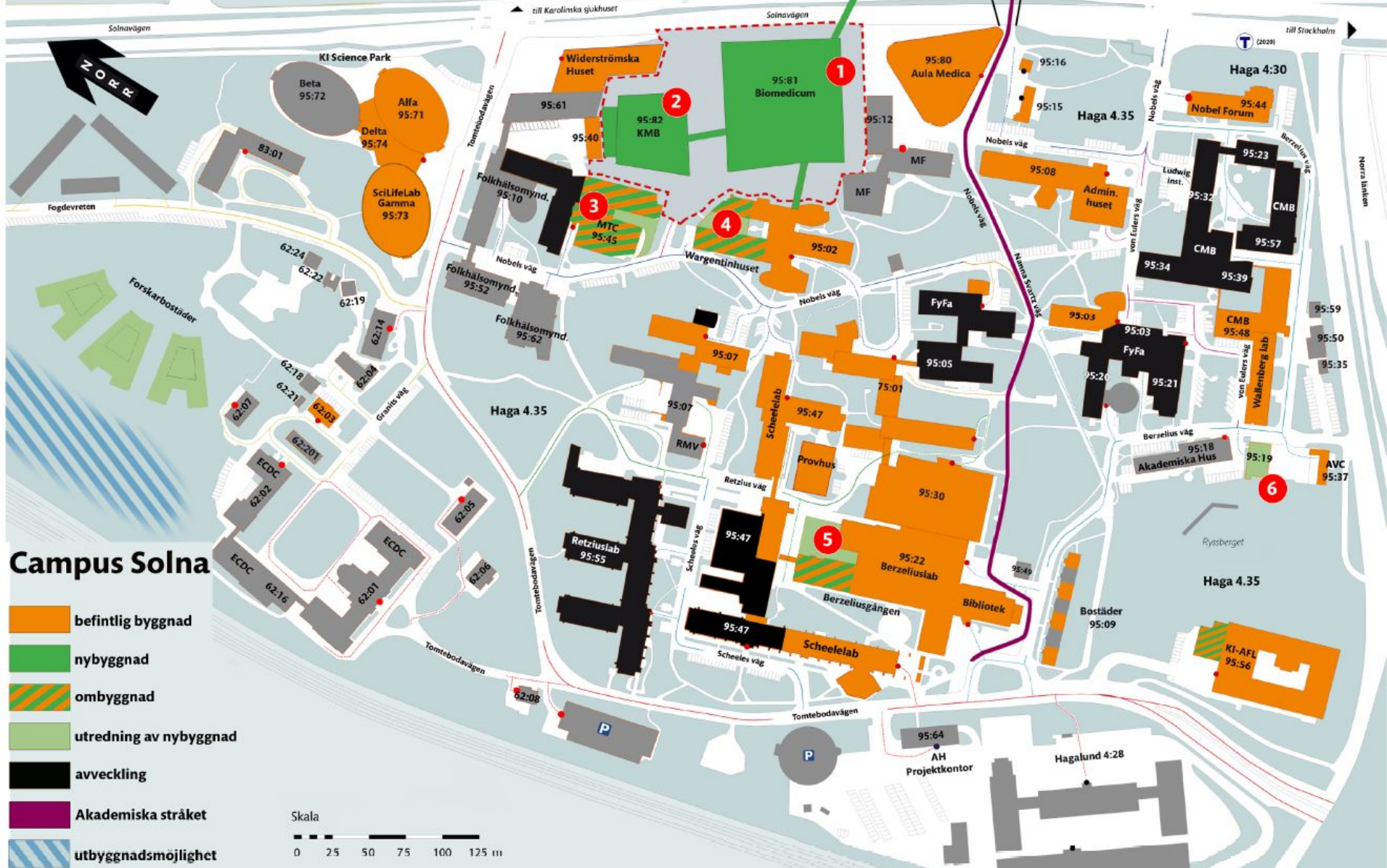
# Campus Solna – What's up?





# Campus Solna – What's up?

Bioclinicum      NKS      set



Green = projects

Black = leaving

Orange = keeping

Blue = clinical









**Karolinska  
Institutet**

# Campus Solna changing

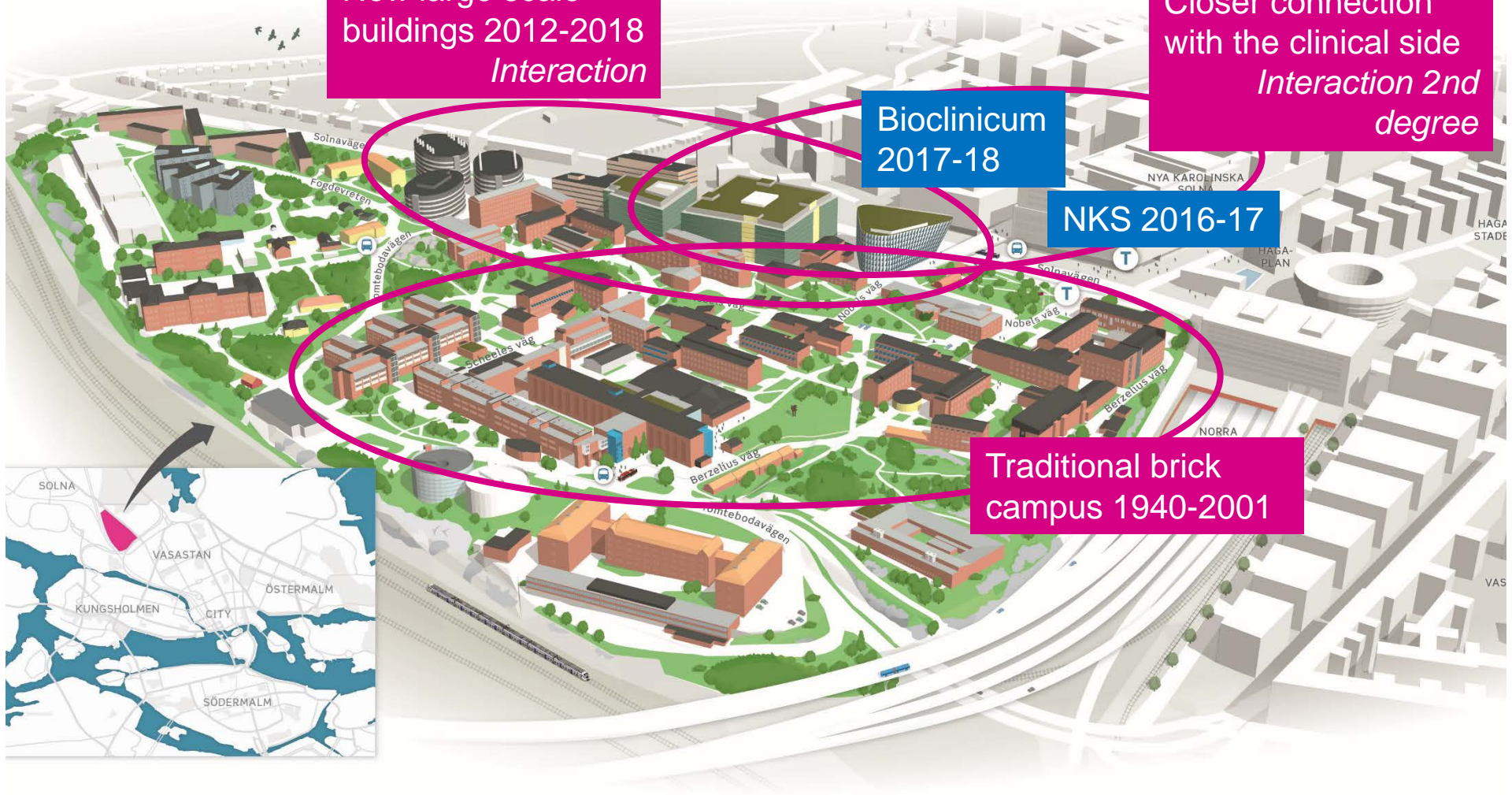
New large scale  
buildings 2012-2018  
*Interaction*

Closer connection  
with the clinical side  
*Interaction 2nd  
degree*

Bioclinicum  
2017-18

NKS 2016-17

Traditional brick  
campus 1940-2001







Karolinska  
Institutet

# Campus Flemingsberg



Karolinska University  
Hospital 2004

Huddinge Hospital  
1968-1977

KTH 2016

Neo 2017

Framtidens Lab 2018

1998

2002

1998  
2016

Södertörn  
1996-2017

2002





**Karolinska  
Institutet**

# Campus Flemingsberg

**Less than Solna, but essential**

Invested: 1 060 MSEK in buildings 260 MSEK in furniture etc.







**Karolinska  
Institutet**

# Campus Flemingsberg

**Less than Solna, but essential**

Invested: 1 060 MSEK in buildings 260 MSEK in furniture etc.





# Strategic projects 2013-2018



**Karolinska  
Institutet**



**Biomedicum, Solna**



**KM-B, Solna**



**Neo, Flemingsberg**



**Alfred Nobels Allé 8,  
Flemingsberg**

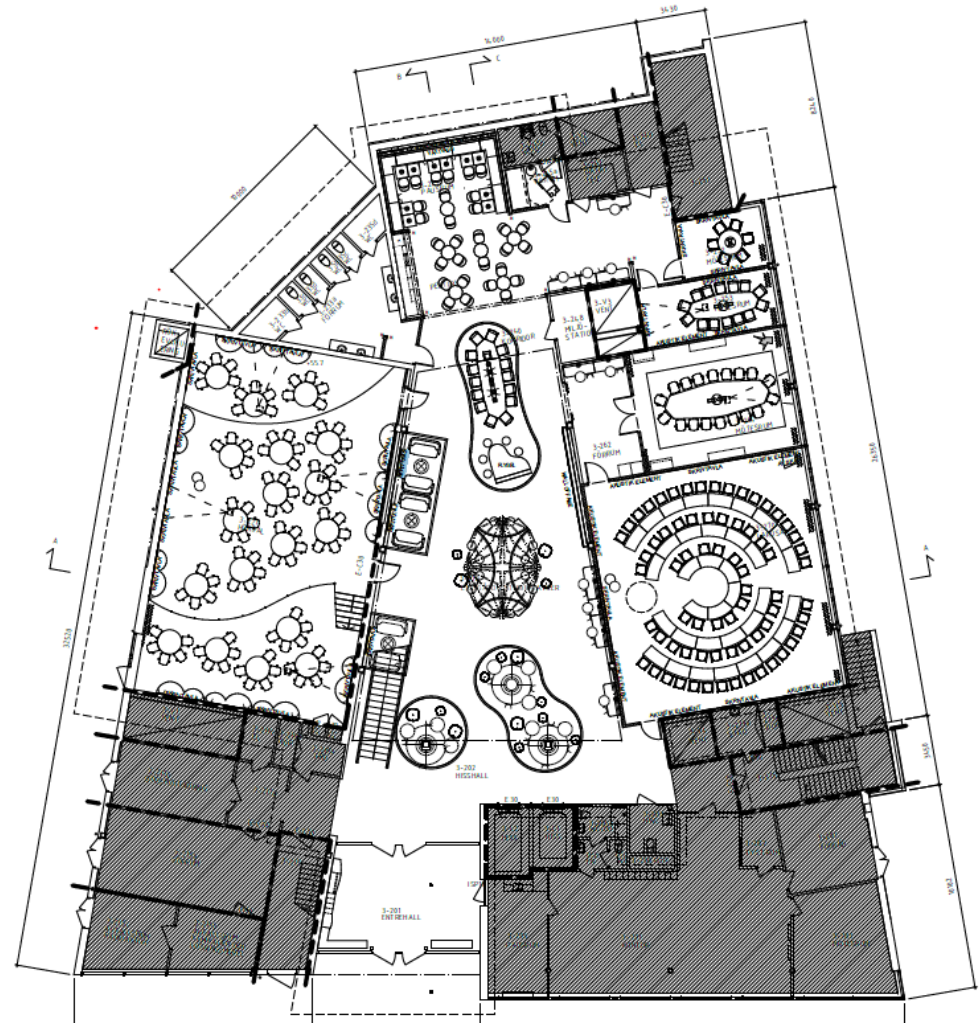




**Karolinska  
Institutet**

# Learning environment

Ongoing project in ANA 10 in Flemingsberg





**Karolinska  
Institutet**

# Learning environment

New lecture hall in Neo, Flemingsberg



**Flexible seating  
Quick forming of groups of 8  
by turning around**



**Advanced sound system  
"Voice Lift"  
No head set mics needed**



# Solna Campus Plan 2030

## Main Strategies

### 1. Welcoming International Campus

Inviting environment for working, learning and well-being

### 2. Central Knowledge Hub

Support increased exchange with surroundings

### 3. Strategy for Development

Identity, density, potential and prioritizing

### 4. Campus with a Green Heart

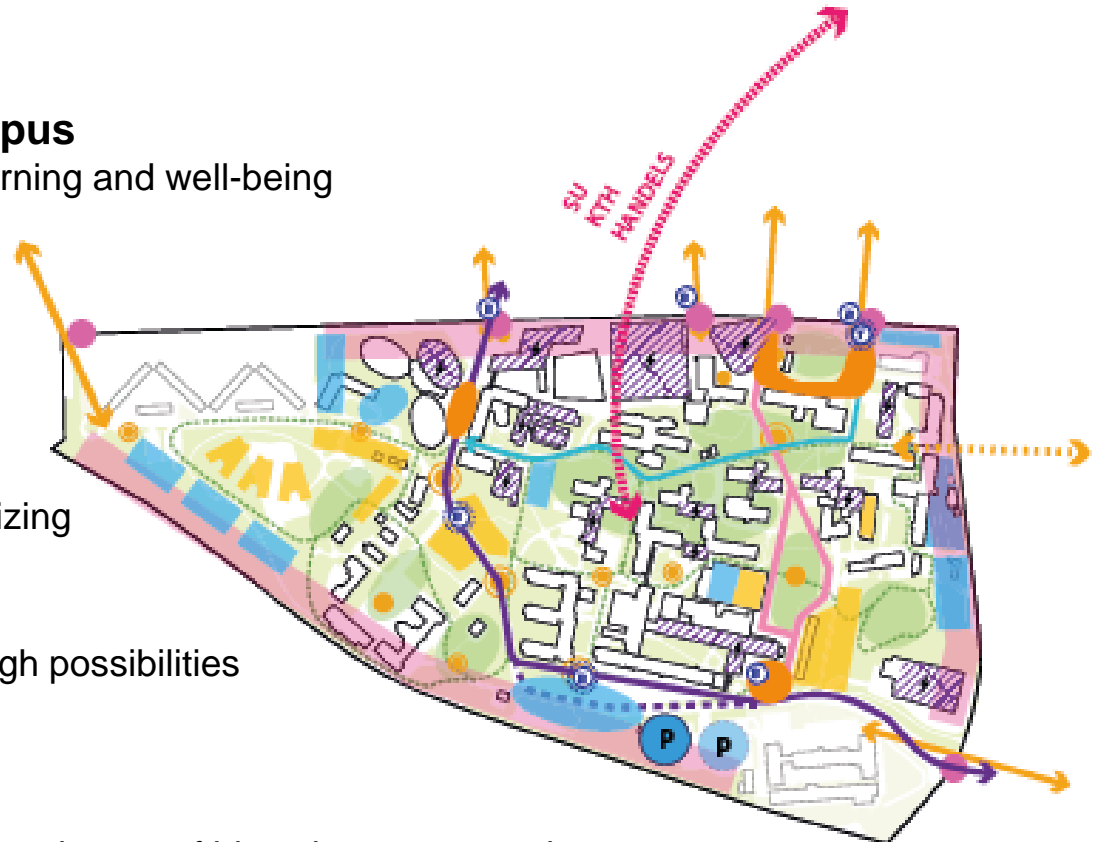
Health promoting environment through possibilities for activity and recreation

### 5. Promoting Innovations

Encourage meetings and increased exchange of ideas between people

### 6. Efficient Use of Resources

Promote a sustainable campus



# Campus planning based on...



Karolinska  
Institutet

## SUSTAINABLE DEVELOPMENT GOALS





# Flemingsberg Campus Plan

A greater complexity:



Karolinska  
Institutet



Mixed campus  
Multiple landlords  
Multiple universities  
The hospital  
The municipality



Karolinska  
Institutet



AKADEMISKA HUS



ByggVesta

HEMSÖ



Huddinge



FLEMINGSBERG  
SCIENCE

# Flemingsberg Campus Plan

A greater complexity



Karolinska  
Institutet

## Way forward ⇒ 2019

Work within five focus areas

Under the direction of **FLEMINGSBERG  
SCIENCE**



1. Operations



2. Facilities



3. Physical structures



4. Life on campus



5. Communication



Thank you!



Karolinska  
Institutet

