

Last night in Sweden

A high-altitude mountain landscape with snow-covered peaks and rocky ridges under a clear blue sky. The foreground shows a steep, snow-covered slope with some rocky outcrops. In the background, several mountain peaks are visible, some with snow patches. The sky is a clear, bright blue.

New
highest
peak



Sök på regeringen.se

Sveriges regering

Statsråden och departementen

Regeringens politik

Detta görs inom olika områden

Så styrs Sverige

Om regeringen, Regeringskansliet

Pressmeddelande från [Finansdepartementet](#)

Klimatdeklaration vid uppförande av byggnader

Publicerad 06 september 2019



Byggsektorns

Miljöberäkningsverktyg



Läs mer:

Erlandsson M: Byggsektorns Miljöberäkningsverktyg BM1.0. Ett branschgemensamt verktyg. Energimyndigheten, E2B2, IVL Svenska Miljöinstitutet, rapport C300, februari 2018.





Roadmap for fossil free competitiveness

A SUMMARY OF ROADMAPS
FROM SWEDISH BUSINESS SECTORS



SKANSKA

Skanskas
gröna betong

700% in two years



Nu släpps NollCO2 - en världsunik miljöcertifiering för klimatneutrala byggnader

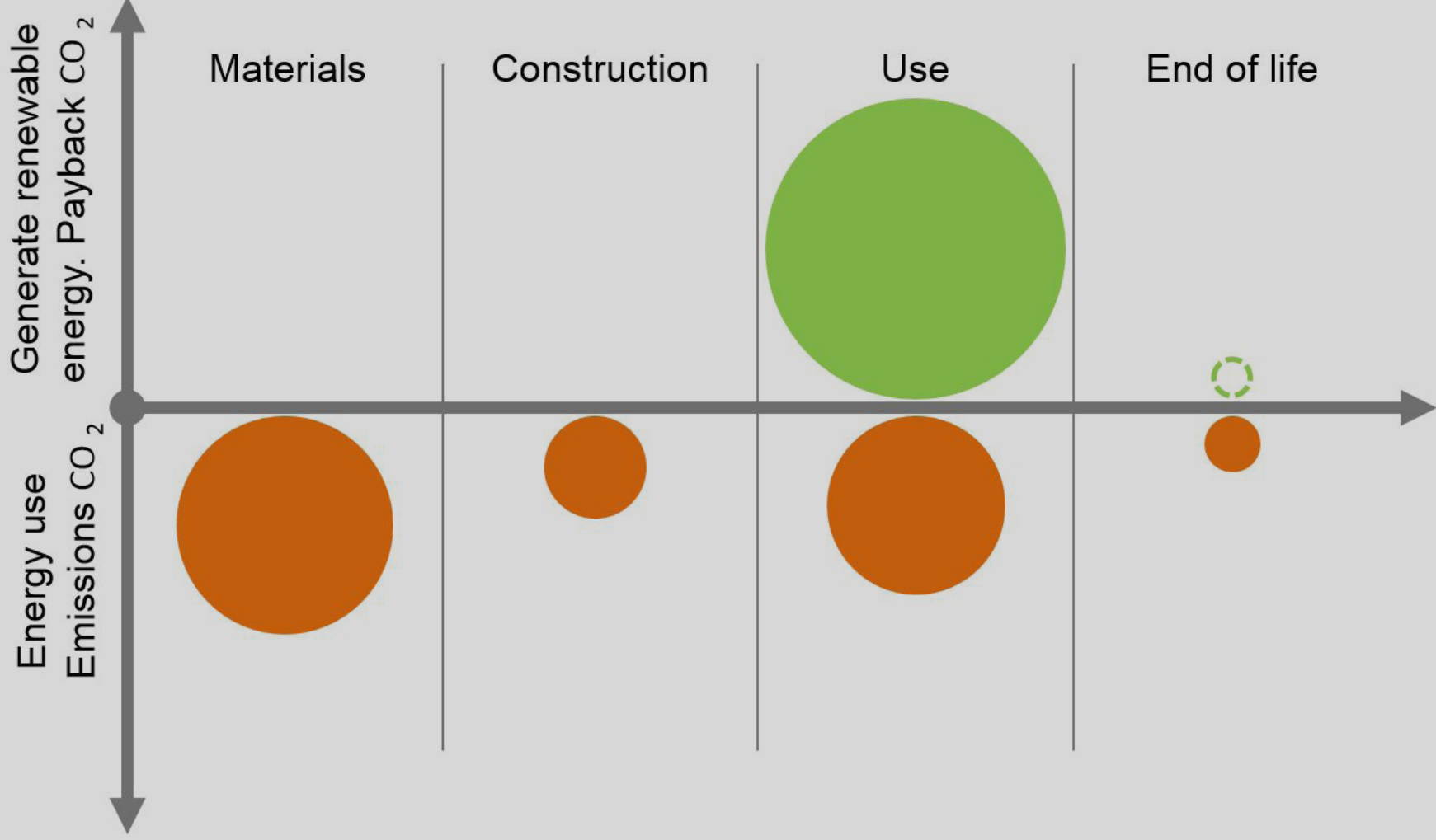
Pressmeddelande

• Jul 03, 2018 08:30 CEST

Share



**SWEDEN
GREEN BUILDING
COUNCIL**





Swedens first No11CO2-building



NoHCO₂

0kg CO₂

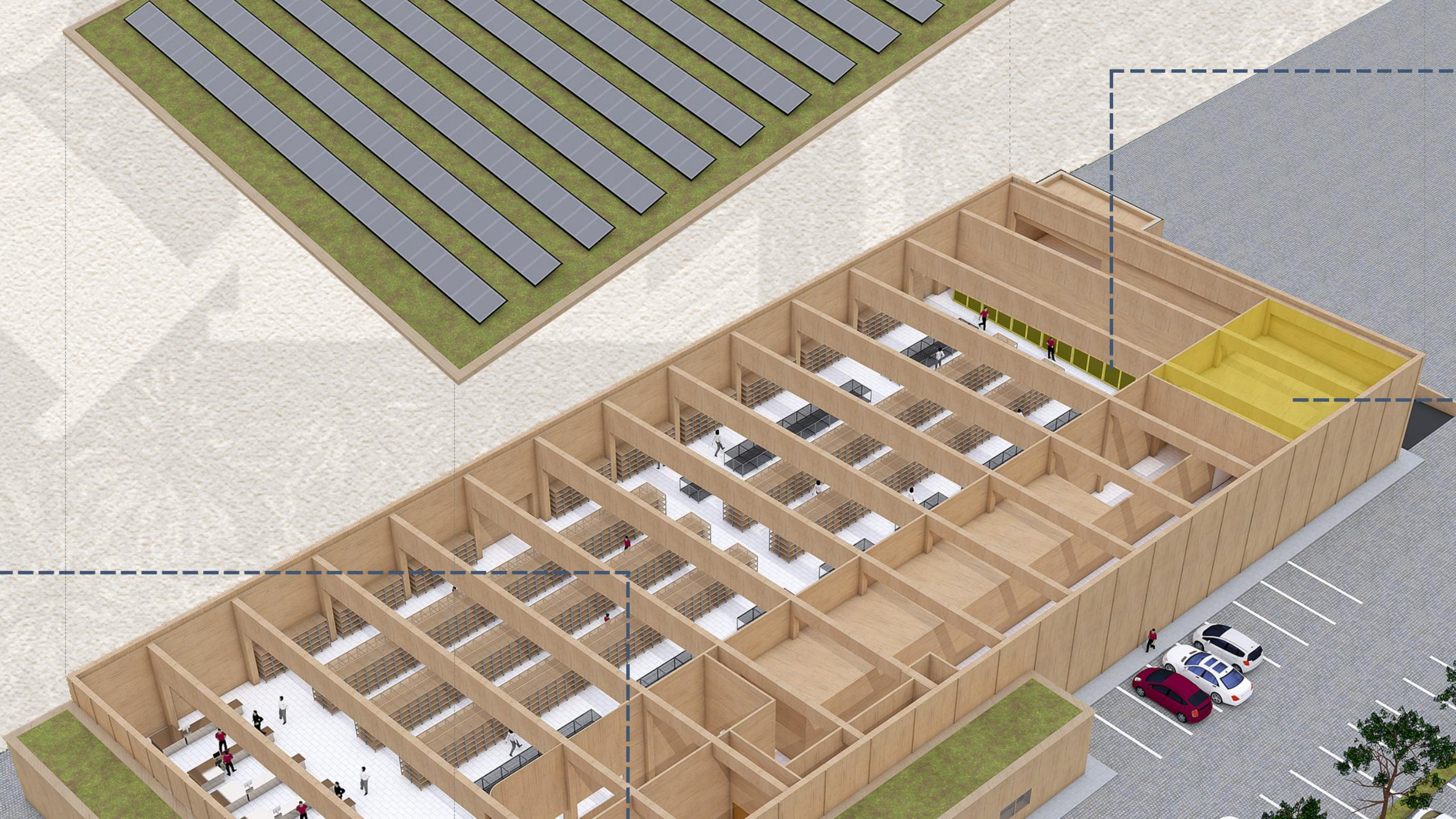
~~0kg CO₂~~

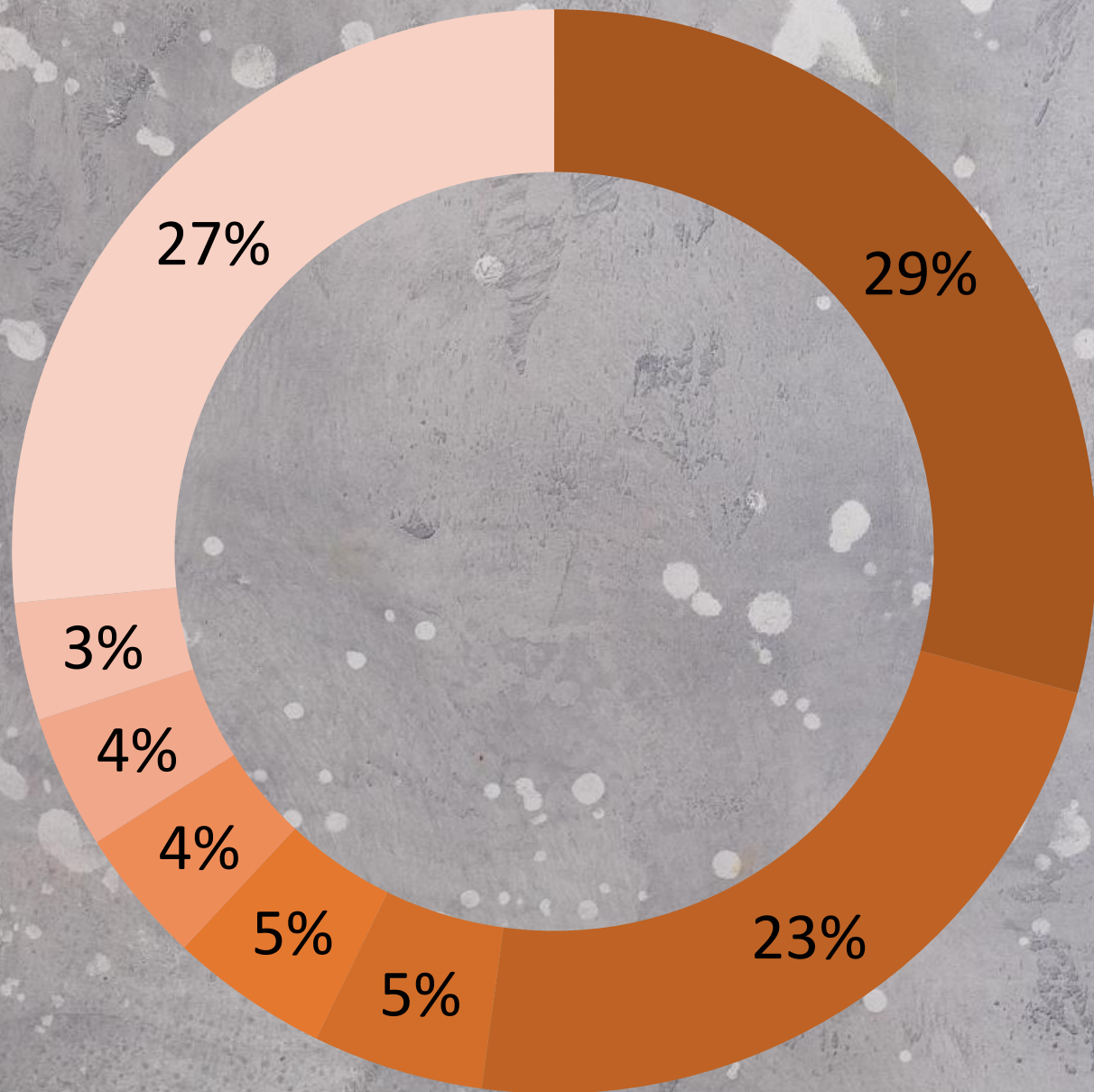
≥ 300kg CO₂ & 80% EPD

550kg CO₂

≥ 300kg CO₂

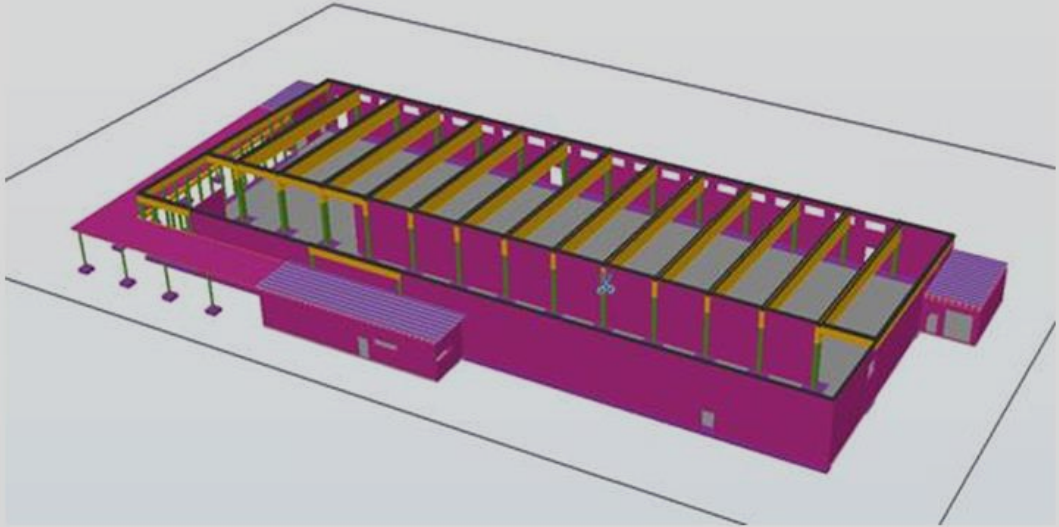
240kg CO₂



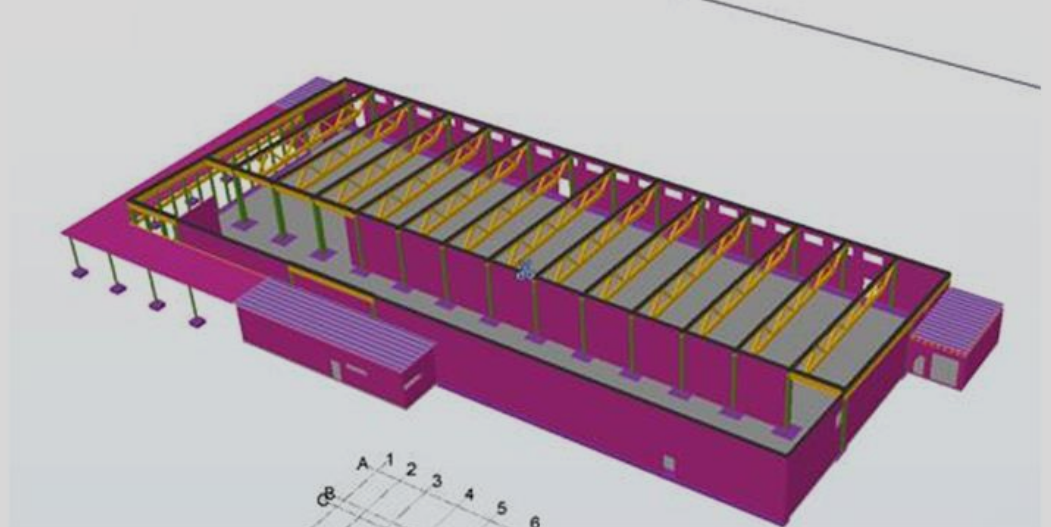


- Betong
- EPS isolering
- Armering
- Glasfasad
- Gipskivor
- KL-trä
- Glasull isolering
- Övrigt

SYSTEM A
 Glulam rectangular beams glulam
 CLT
 Cassettes prefabricated elements

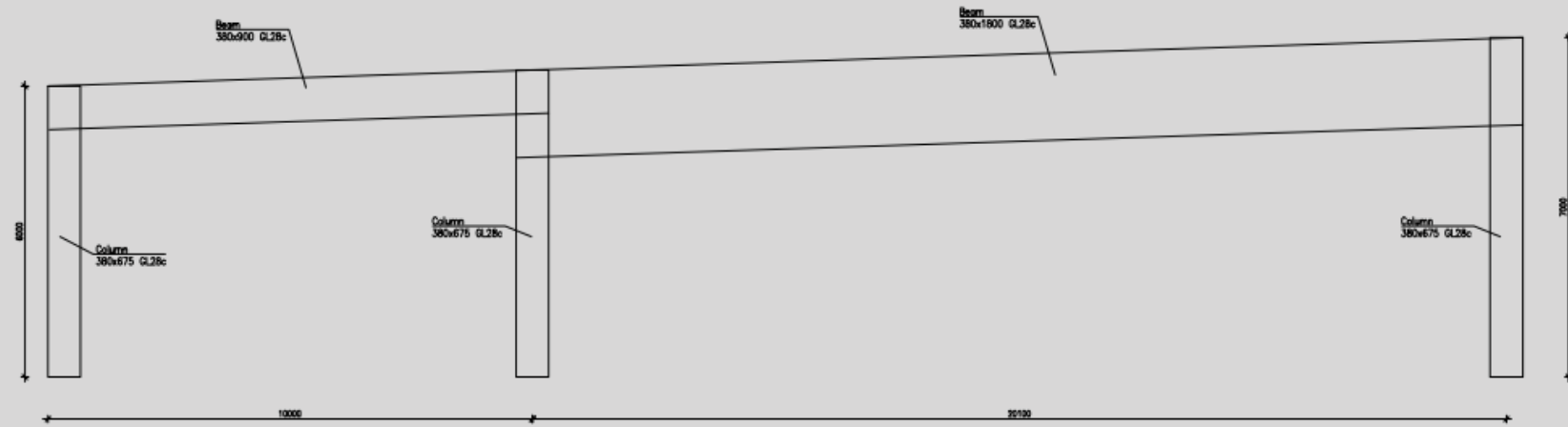


SYSTEM B
 Glulam Trusses
 CLT
 Cassettes prefabricated elements

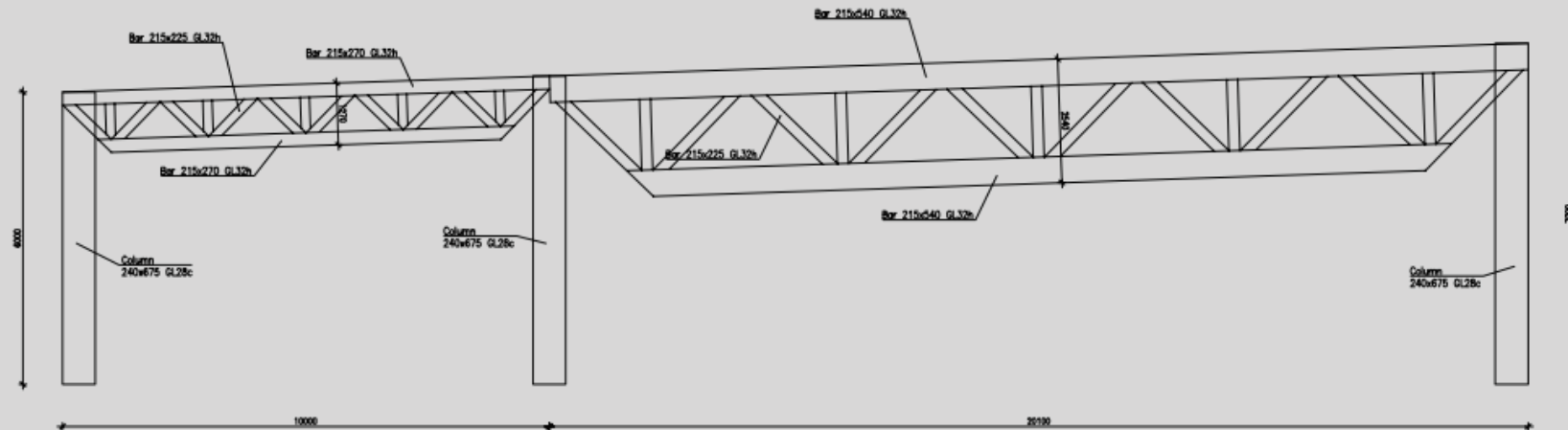


Beams and Columns	259,3 m ³	Beams and Columns	148,7 m ³	43% Reduction
CLT	175,7 m ³	CLT	175,7 m ³	
Cassettes prefabricated elements (roof)	469,2 m ³	Cassettes prefabricated elements (roof)	469,2 m ³	
TOTAL	904,2 m³	TOTAL	793,6 m³	12% Reduction

Glulam beam (22 m³)



Glulam truss (11 m³)





CO₂ BUDGET

Total CO₂ påverkan

Arkiv Meddelande Hjälp Acrobat Berätta vad du vill göra

Ignorera Ta bort Arkivera Svvara Svvara alla Vidarebefordra Möte Snabbmeddelande Fler

Ta bort Svvara

PF tor 2019-09-12 08:51
Lidl Visby - Foundations

Till Alexander Landborn
Kopia

i Du svarade på det här meddelandet 2019-09-12 10:02.

Hello Alex,

We have done some adaptations on the foundations together with Arriba.

Are we still keeping track of the quantities during construction?

Please contact Tobias so he can explain you the modifications.

Regards

Architect



Construction



Builder



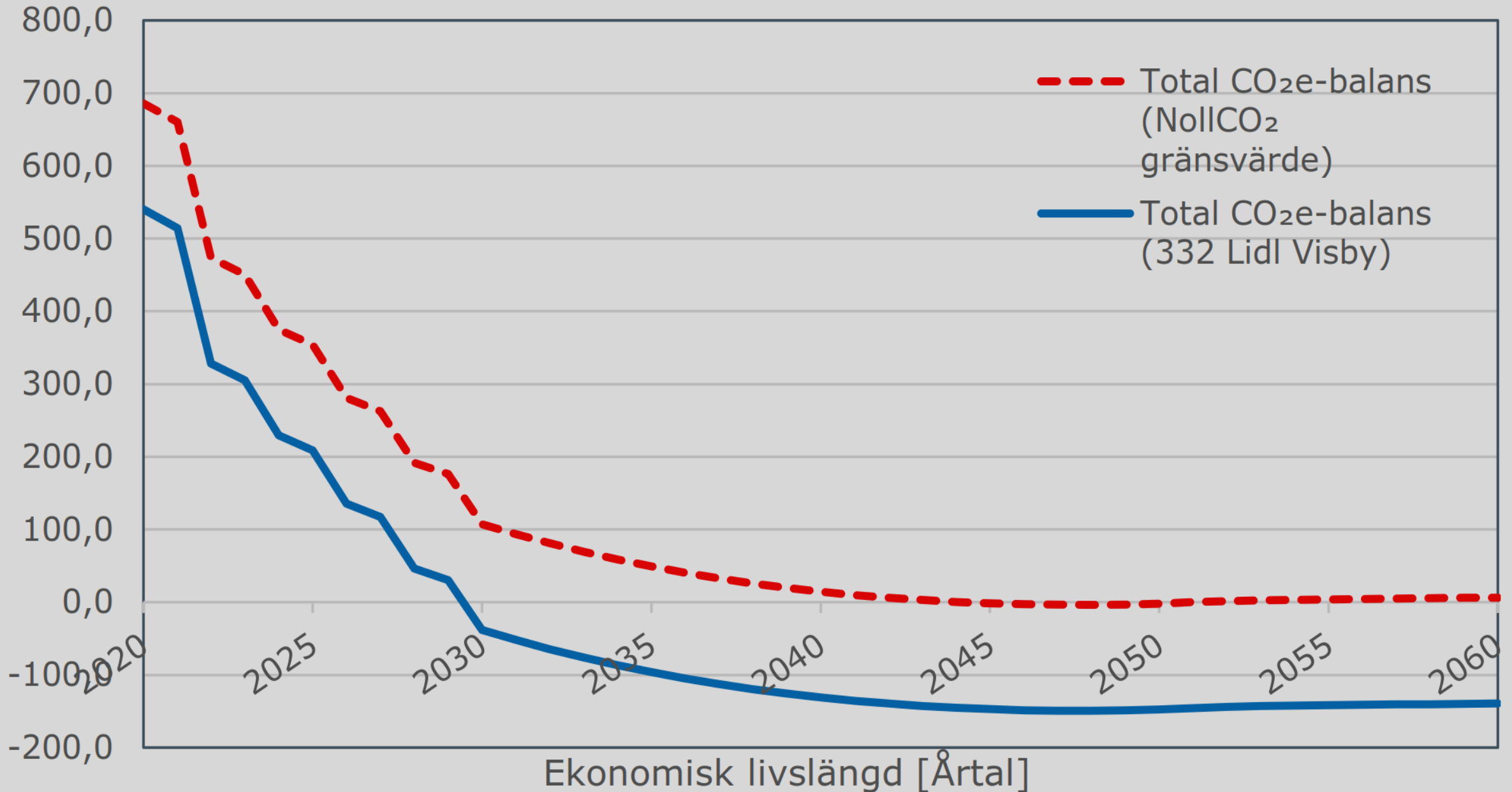
Architect

Builder

Construction

CO2e-balans
[ton CO2e]

Total CO2e-balans 332 Lidl Visby





300

216

0

LINK ARKITEKTUR

RUM FÖR BÄTTRE LIV