



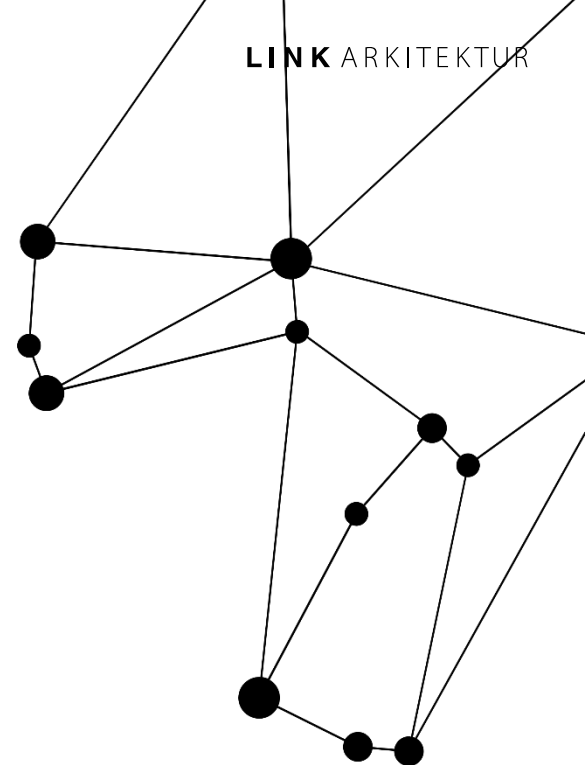
Lessons learnt from designing ZEB+

Kilden barnehage, A study in how to reduce the need of energy.

By Ingunn Sirevåg Jensen

■ Ingunn Sirevåg Jensen

Nationality	Norwegian
Education	Sivilarkitekt MNAL
Firm	LINK arkitektur AS
Position	Architect and project leader
Main gig	Worked with housing, schools and kindergartens. Special field is nursing homes .
Also	Middle manager at LINK arkitektur AS





KILDEN BARNEHAGE
LINK ARKITEKTUR



energy-positive building



FUTURE
BUILT

breeam nor

KILDEN BARNEHAGE
LINK ARKITEKTUR



KILDEN BARNEHAGE
LINK ARKITEKTUR

REGULATIONS

- The volume and shape of the existing buildings must be preserved in the new project.
- A row of listed trees along the southern border should be kept.



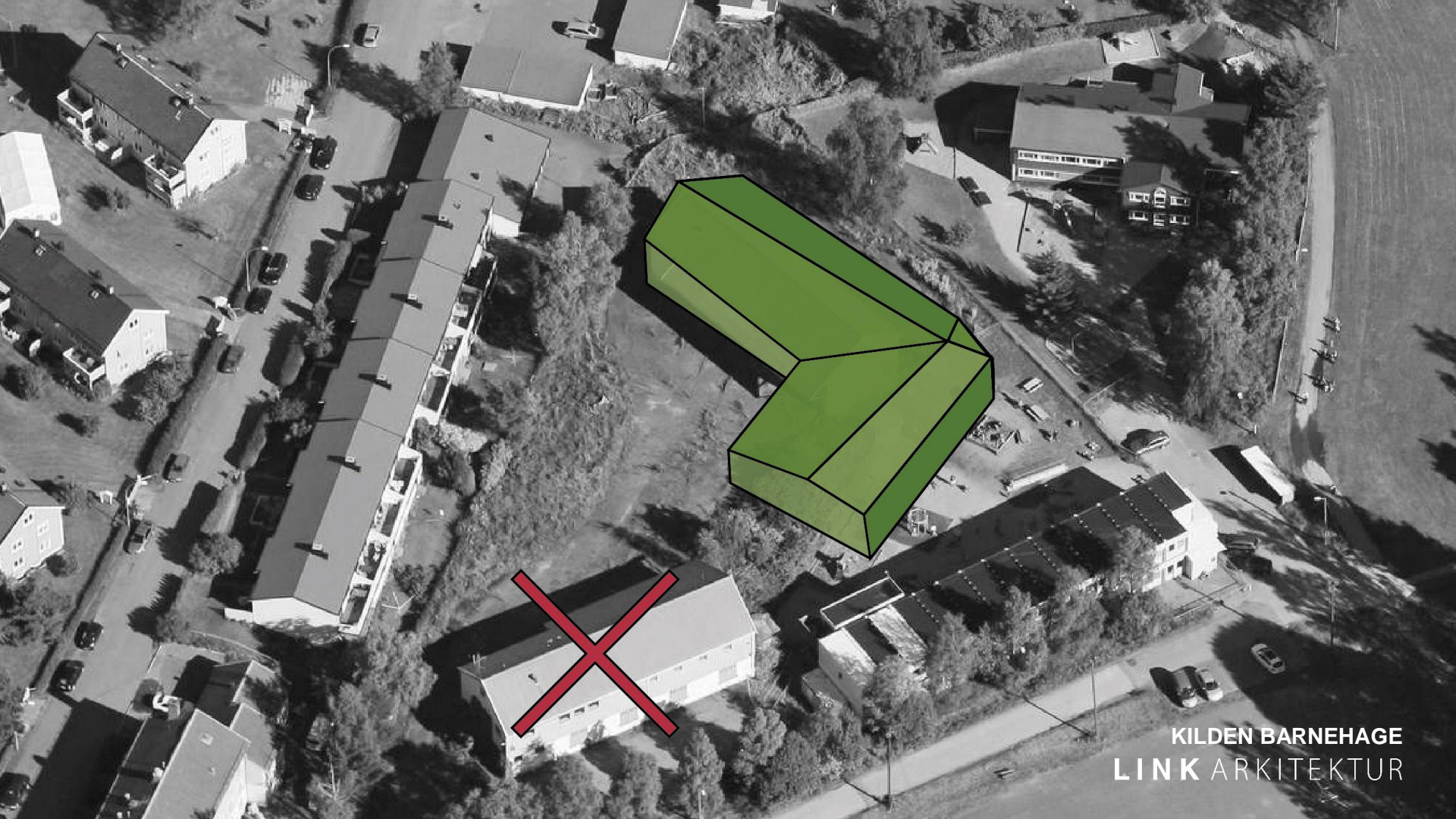
REDUCE THE NEEDS OF ENERGY

Compact

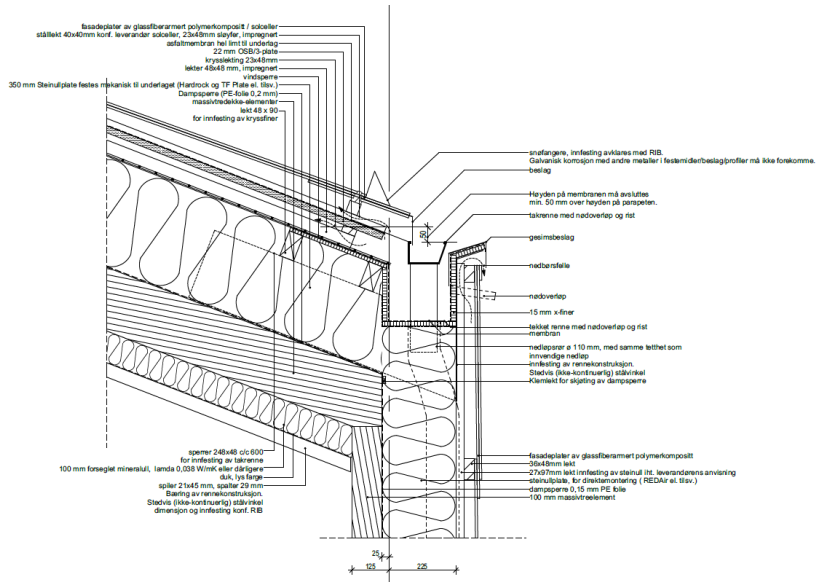


Avoiding thermal bridges.





KILDEN BARNEHAGE
LINK ARKITEKTUR



KILDEN BARNEHAGE
LINK ARKITEKTUR



KILDEN BARNEHAGE
LINK ARKITEKTUR



KILDEN BARNEHAGE
LINK ARKITEKTUR

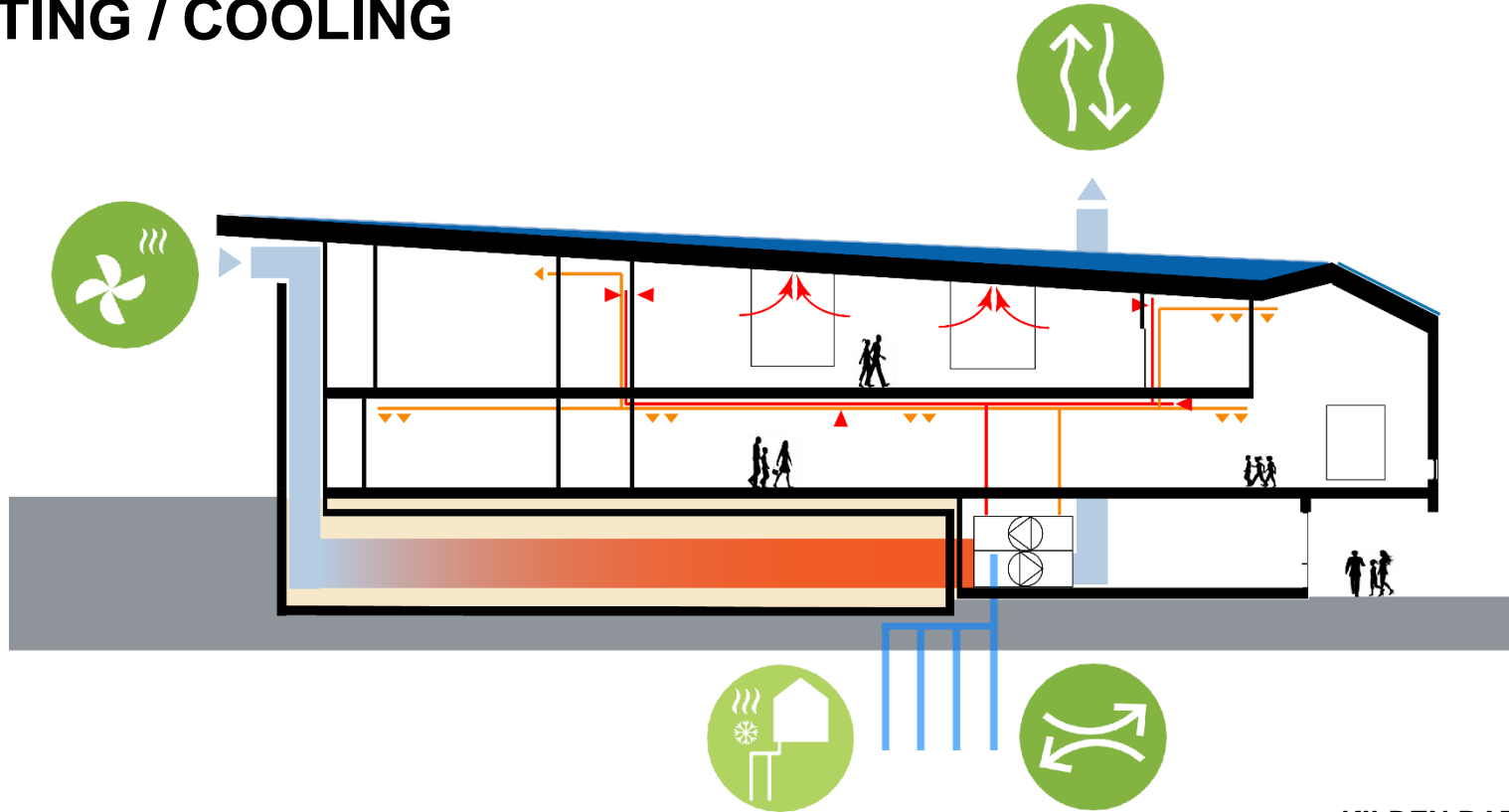


KILDEN BARNEHAGE
LINK ARKITEKTUR





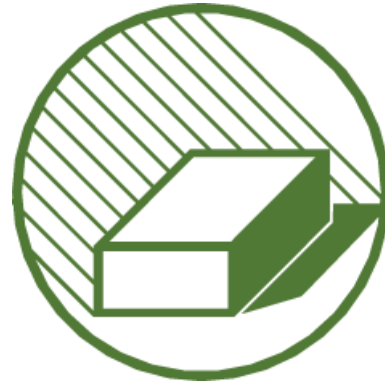
A CULVERT REDUCES THE NEED OF HEATING / COOLING

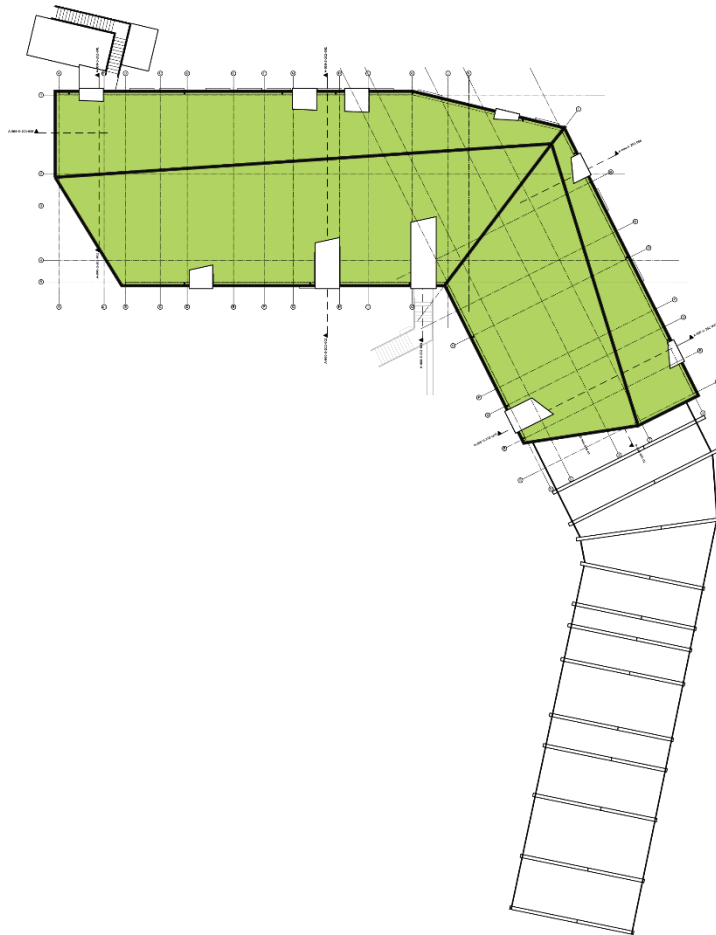




KILDEN BARNEHAGE
LINK ARKITEKTUR

ENERGY PRODUCTION

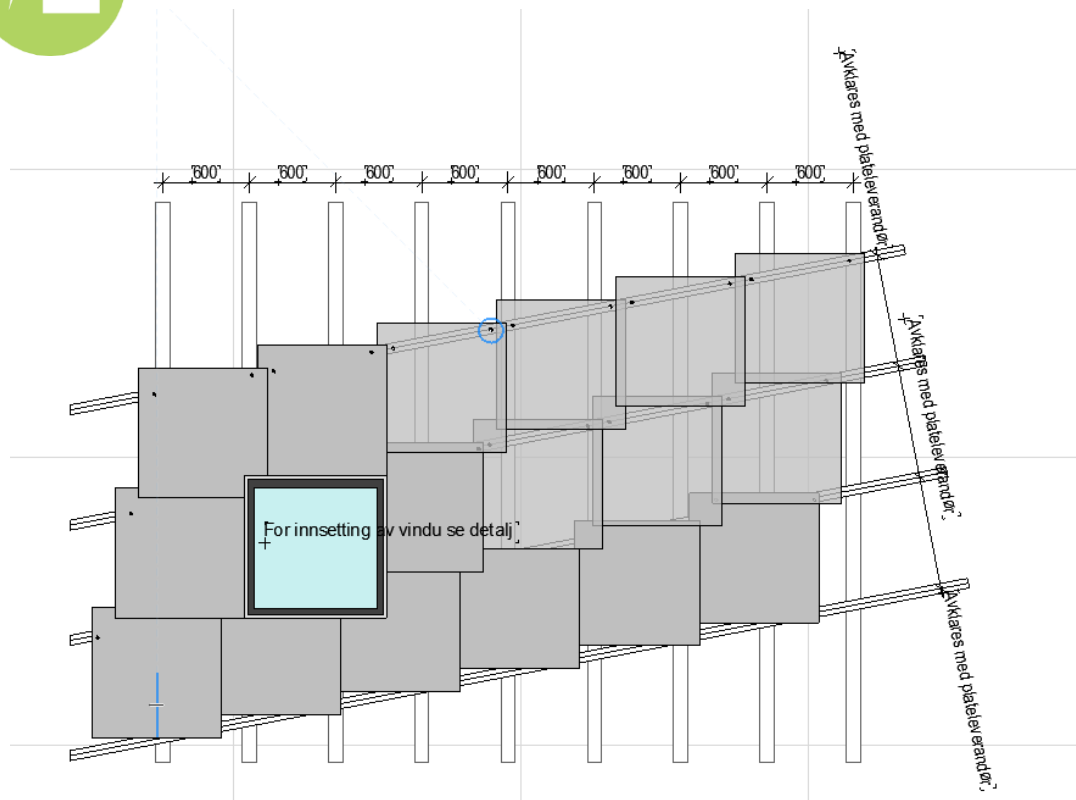




KILDEN BARNEHAGE
LINK ARKITEKTUR



KILDEN BARNEHAGE
LINK ARKITEKTUR



KILDEN BARNEHAGE
LINK ARKITEKTUR



KILDEN BARNEHAGE
LINK ARKITEKTUR



Thank you



KILDEN BARNEHAGE
LINK ARKITEKTUR