

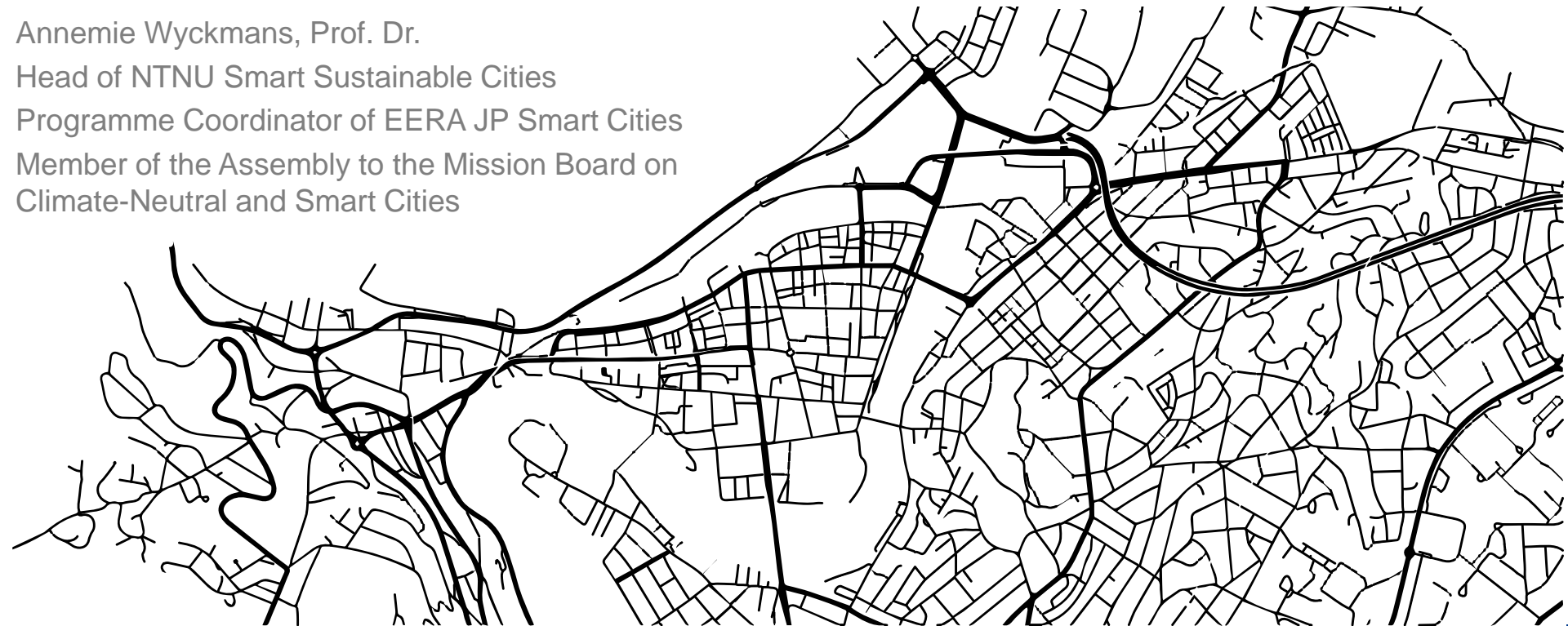
Proposed Priorities for the Horizon Europe Mission on Climate-Neutral and Smart Cities

Annemie Wyckmans, Prof. Dr.

Head of NTNU Smart Sustainable Cities

Programme Coordinator of EERA JP Smart Cities

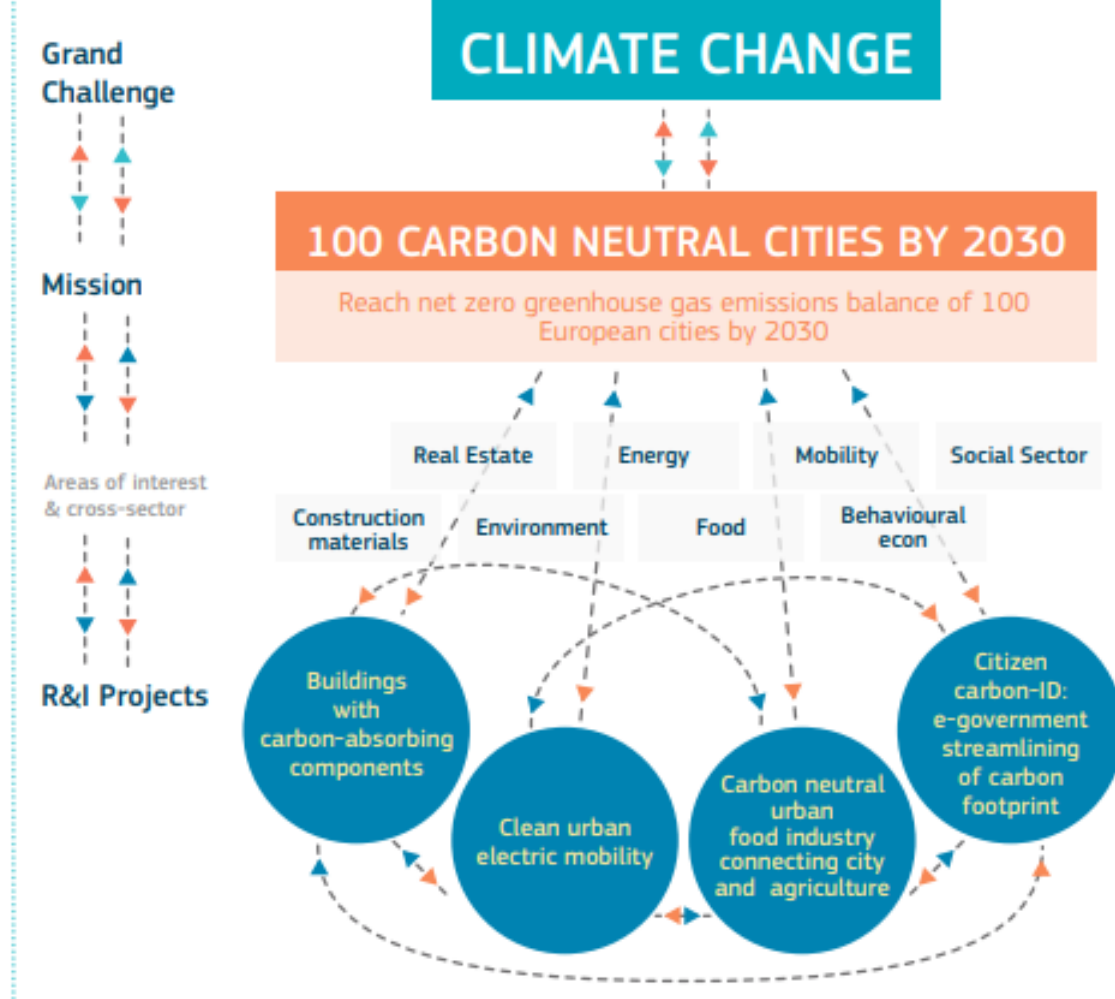
Member of the Assembly to the Mission Board on
Climate-Neutral and Smart Cities



HE Missions need to be/have

- Bold, inspirational with wide societal relevance
- A clear direction: targeted, measurable and time-bound
- Ambition but realistic research and innovation actions
- Cross-disciplinary, cross-sectoral and cross-actor innovation
- Multiple, bottom-up solutions

(Mission-Oriented Research & Innovation in the European Union MISSIONS. A problem-solving approach to fuel innovation-led growth, by Mariana MAZZUCATO)



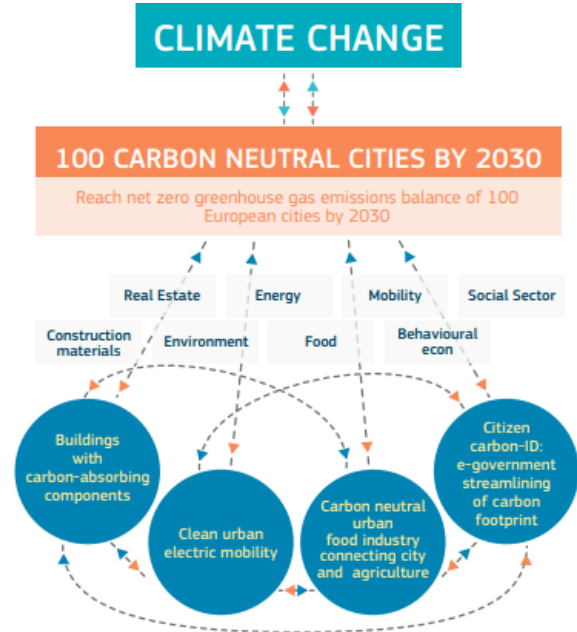


Grand
Challenge

Mission

Areas of interest
& cross-sector

R&I Projects





I know you're trying, but just not hard enough.
Sorry

Greta Thunberg

We know the barriers – do we walk the talk?



The cover features a light blue background with a stylized illustration of a smart city at the bottom, including buildings, a bus, a car, a bicycle, and a satellite. The text is centered in the upper half.

 **EIP-SCC**
European Innovation Partnership
on Smart Cities and Communities

 **NTNU**

Marketplace of the European Innovation Partnership
on Smart Cities and Communities Action Cluster
Integrated Planning/Policy and Regulation

Smart City Guidance Package

A Roadmap for Integrated Planning
and Implementation of Smart City projects

J. Borsboom-van Beurden, J. Kallaos, B. Gindroz, S. Costa, J. Riegler



The cover has a green background with a network diagram of smart city icons (wind, sun, water, etc.) connected to a central 'Smart Cities' node. The text is centered in the upper half.



Why may replication (not) be happening
**Recommendations on EU
R&I and regulatory policies**



 EU Smart Cities
Information
System

EMPOWERING SMART SOLUTIONS
FOR BETTER CITIES www.smartcities-infosystem.eu

 Energy



The cover has an orange background with a blue geometric pattern at the top. The text is centered in the upper half.

**Nasjonalt veikart for
smarte og bærekraftige
byer og lokalsamfunn**

En guide for kommuner og fylkeskommuner utarbeidet
av Design og arkitektur Norge (DOGA), Smartbyene og
Nordic Edge.

 Smartbyene

 DOGA

 NORDIC
EDGE



We did it!

In 2030, all cities are sustainable, resilient, safe & inclusive.

It all started at the NTNU European Conference 2019 in Brussels, where the participants jointly

identified key game changers, decided to move away from business as usual, to celebrate every step on the way of getting there, and to take all their partners with them on this path.

What is the game changer that will make cities achieve SDG11 by 2030?

Go to www.menti.com and use the code **45 45 2**

- Co-Creation
- Value & Impact
- Decision Support
- Replication
- Learning from failure



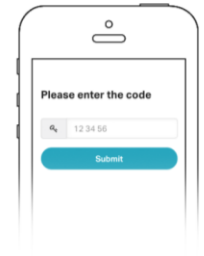
1

Grab your phone

www.menti.com

2

Go to www.menti.com



3

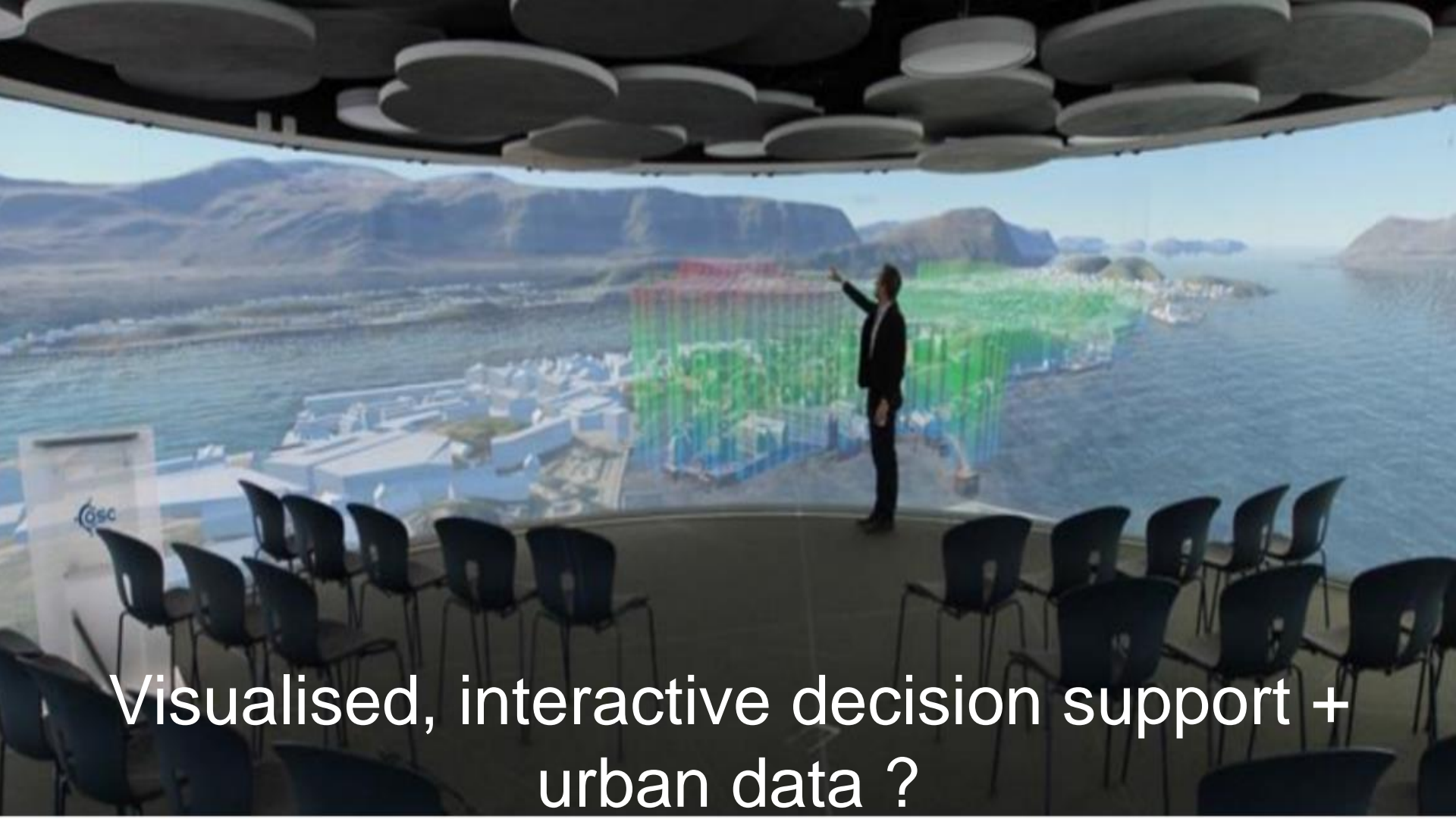
Enter the code 45 45 2 and vote!



Governance structures for co-creation of
people-centered solutions ?



Appreciation of (non)economic value for
distinct stakeholder groups ?



Visualised, interactive decision support +
urban data ?



From testbeds to scaling up & replication ?



Learning from failure — what works, what does not, why, and what can we do about it?

Programme

10:15 Welcome, Instructions for contributions, Proposed Priorities for the Climate-Neutral and Smart Cities Mission (Annemie Wyckmans, Professor, Department of Architecture and Planning and Head of NTNU Smart Sustainable Cities, NTNU)

10:35 The research perspective (Anne-Catherine Rota, Higher Education and Research, Elsevier)

10:45 Reframing the urgencies of climate-neutral and smart cities (Mari Sanden, PhD Candidate, Trondheim Academy of Fine Art, NTNU & Florian Schneider, Head of Department, Trondheim Academy of Fine Art, NTNU)

10:55 The challenge of replication (Han Vandevyvere, Associate Professor, Department of Architecture and Planning, NTNU and Senior researcher and Project manager, EnergyVille)

11:05 The Smart City Guidance Package (Judith Borsboom-van Beurden, Lead of the EIP SCC Initiative, Smart City Guidance Package and Senior Researcher Smart Sustainable Cities, Department of Architecture and Planning, NTNU)

11:15 The industry perspective (Paul Cartuyvels, ECTP European Construction Technology Platform, Member of Praesidium; BOUYGUES Europe, EU Affairs Director)

11:30 Panel discussion and open debate (Moderator: Annemie Wyckmans, Professor, Department of Architecture and Planning and Head of NTNU Smart Sustainable Cities, NTNU)

Panelists:

Haitze Siemers (Head of Unit, Renewables, Research and Innovation, Energy Efficiency - New energy technologies, innovation and clean coal, DG ENER, European Commission)

Paul Cartuyvels (ECTP European Construction Technology Platform, Member of Praesidium; BOUYGUES Europe, EU Affairs Director)

Han Vandevyvere (Associate Professor, Department of Architecture and Planning, NTNU and Senior researcher and Project manager, EnergyVille)

Judith Borsboom-van Beurden (Lead of the EIP SCC Initiative, Smart City Guidance Package and Senior Researcher Smart Sustainable Cities, Department of Architecture and Planning, NTNU)

Mari Sanden (PhD Candidate, Trondheim Academy of Fine Art, NTNU)

12:30 Concluding remarks

Carl Fredrik Lutken Shetelig (Professor and Dean, Faculty of Architecture and Design, NTNU)

What is the game changer that will make cities achieve SDG11 by 2030?

Go to www.menti.com and use the code **45 45 2**

- Co-Creation
- Value & Impact
- Decision Support
- Replication
- Learning from failure



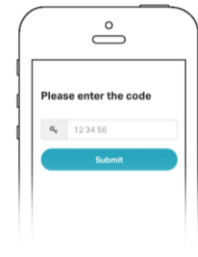
1

Grab your phone

www.menti.com

2

Go to www.menti.com



3

Enter the code 45 45 2 and vote!