

# Circularity in plastic packaging

NTNU and BEWI, "Circular Plastics 2023-2026"

## Motivation

"Circular Plastics 2023-2026" supported by the Norwegian Retailers' Environment Fund, has the primary objective of promoting a circular approach to plastic usage. The project aims to foster collaboration among students, researchers, and businesses. BEWI, as a leading producer of **polystyrene** and **hard plastic products**, aligns well with the goals of the "Circular Plastics 2023-2026" initiative. Their commitment to driving a circular economy in the plastics industry makes them a valuable potential partner for the project.



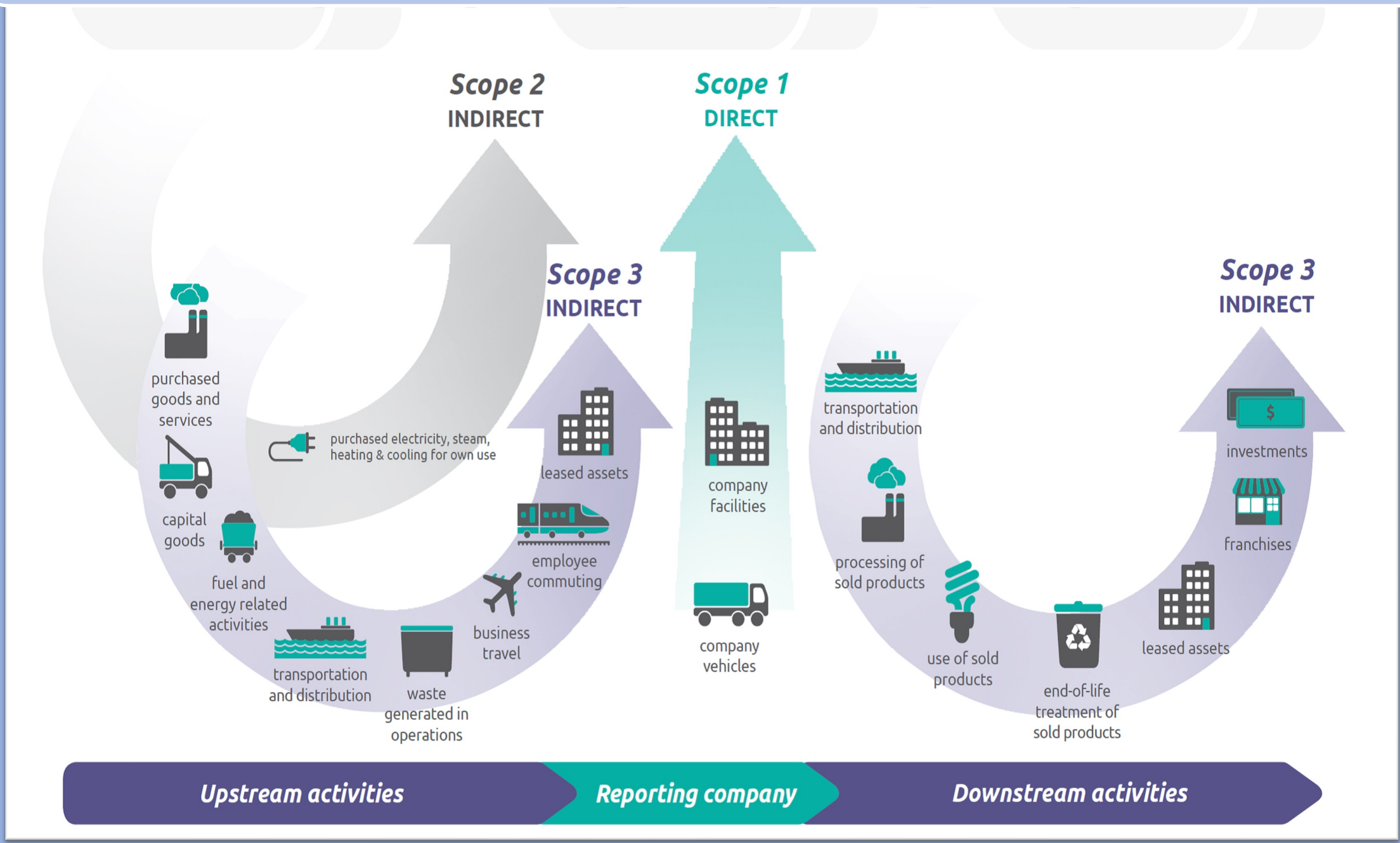
EPS

BEWI produces fish boxes and other packaging products (and much more) from EPS beads (norsk: isopor). EPS is Expanded Polystyrene. BEWI also produces hard plast packaging products from PE and PP



Hard plastic (recycled) from BEWI Norplasta

## Objectives



The objective of the consignment is to develop frameworks for calculating Scope 3 GHG emissions related to three key aspects: the processing of sold intermediary products, the end-of-life treatment of sold final products, and the capital goods purchased and used by BEWI in its production facilities.

## Results

The end result were frameworks to calculate the emissions from all key aspects, for BEWI further to use in their climate accoutning. The GHG emissions from 2021/2022 for these categories where calculated.

Sophie L Sundberg & Rakib Ahmed

### Processing of intermediate sold products



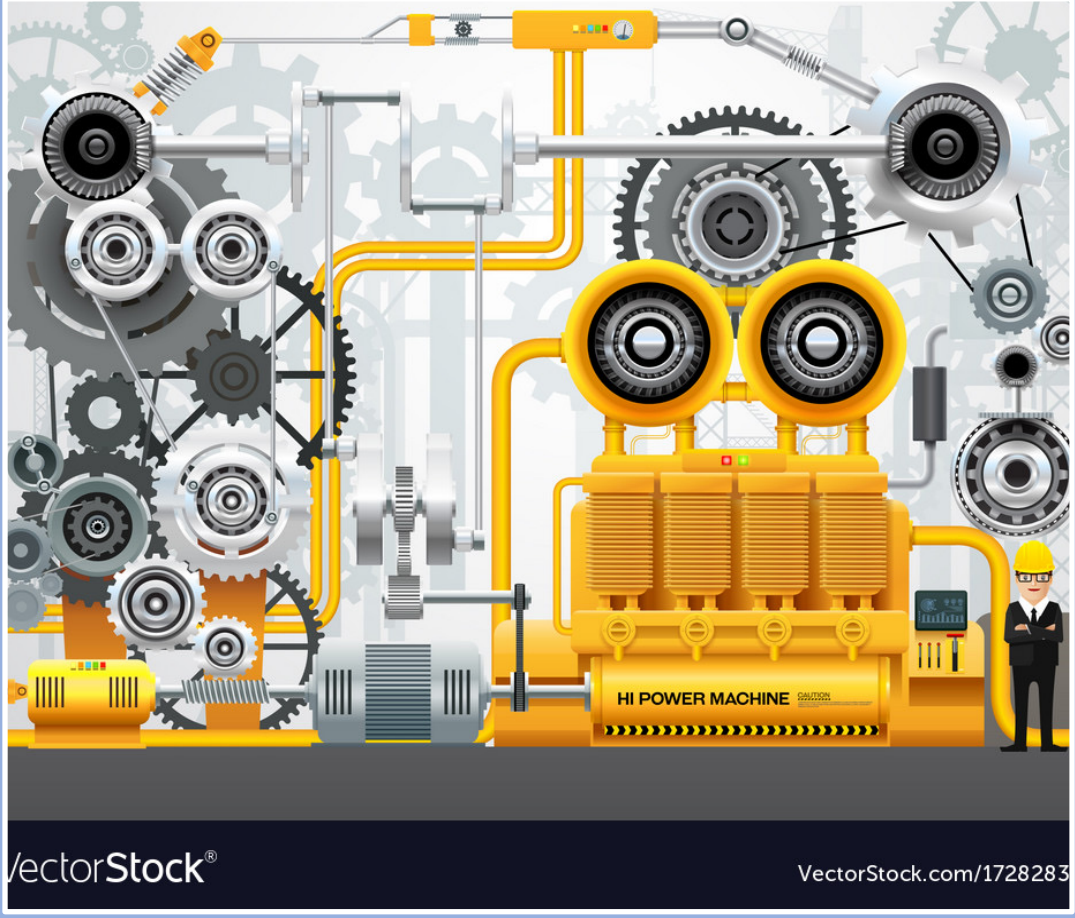
Bewi sells raw and recycled to other production manufacturers. The aim was to calculate the emissions from these productions

### End-of-life treatment



Emissions from end-of-life handling of BEWI products. Recycling and waste treatment

### Capital goods



This category contains emissions from production of all BEWI machinery

**Supervisors:** Camilla Bjerkli, Samuel Voorwalt, Petter Bostrøm. BEWI



NTNU

Kunnskap for en bedre verden