

ISEE Winter School 2014 Program Overview

The ISEE Winter School '14	Tuesday 28. January	Wednesday 29. January	Thursday 30. January
9:00	Introduction: (Ida Fuchs, Gabriella Tranell) Welcome Speech: Green Business - Sustainability in practice (Sven Collett, Environmental Agent)	Transition to Renewable Energy Systems – Hydropower (Ånund Killingtveit)	Integration of Renewable Energy into Smart Grid (Ole-Morten Midtgård)
10:00	SFFE, (Garbiella Tranell) BEST, (Franz LaZerte) IUG/EWB (Engineers without borders)	Multiregional environmental comparison of low carbon electricity generation (Evert Bouman)	Intro PV-Systems (Frank Mauseth)
11:00	Introduction of Renewable Energies in Transportation (Ann Mari Svensson)	Solar Energy in Buildings (Anne Grete Hestnes)	Energy Storage for Renewables (Steve Völler)
12:00	Lunch break	Lunch break	Lunch break
13:00	Bus to Tiller/ District Heating	Company presentation: 26,4 TWh Renewable Energy Sarepta Energy – part of the solution (Michael Momyr, Sarepta Energy) Company presentation: Young researcher at Sintef Energy (Hossein Farahmand, Sintef Energy)	Solar cells – lecture and lab visit (Marisa Di Sabatino Lundberg)
14:00	Presentation and visiting the district heating plant Statkraft, Trondheim Tiller, Erik Winsnes	Company presentation: Hywind and Offshore Wind Projects in Statoil (Bjørn Skaare, Statoil) <i>Coffee break and mingling</i>	Wind Energy – lecture and lab visit (Tore Undeland)
15:00		Company presentation: Siemens (Thomas Skånøy, Siemens)	Information on the 2. Year of study: Geothermal systems – research and study opportunities Magnus Thor Jonsson (University of Iceland) Administrative student issues for DTU (Maria Runnering, DTU)
16:00		Maxi Taxi to Bymarka/ Norwegian Woods Activity Dinner at the cottage	How is it to be a student at DTU? (Joey Alfrink, DTU student)
17:00			
19:00 – open end	Dinner at Mormors		Dinner at Mikrobryggeriet: Students and representatives of each institution are invited

Contact coordinator: Ida Fuchs, mobil: +47 94 34 32 85 (languages: German, Norwegian, English)

The ISEE Winter School 2014

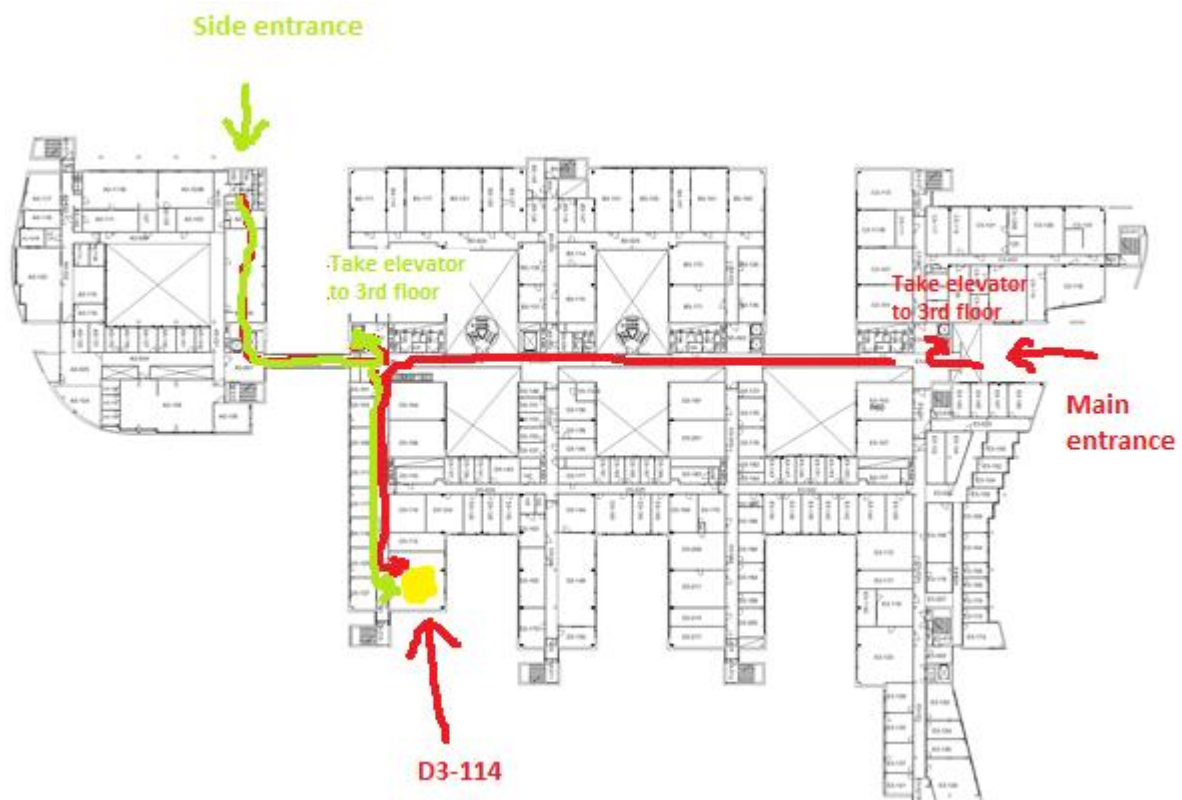


– View from The Old Bridge (Gamle Bybrua), Baklandet, Trondheim –

Event place: Room D3-114, Realfagbygget, Gløshaugen, NTNU, Trondheim, Norway

How to find it?

Find the building called Realfagbygget. Ask anyone on the campus. Enter the building either at the **main entrance** or the **side entrance**. Follow the instruction in the map below.



Program

Monday

- 16:00—18:00 Arrival of external ISEE students at Quality Hotel Augustin
19:00 – 20:00 Short briefing on practical matters for external ISEE students at Augustin

Tuesday

- Realfagbygget D3-114 -

- 8:45 – 9:00 Register and Coffee
9:00 – 9:15 Introduction by the program leader **Gabriella Tranell** and the coordinator **Ida Fuchs**
9:15 – 10:00 Motivation speech: Green Business - Sustainability in practice (**Sven Collett**, Environmental agent, PENS)
10:00 – 10:15 SFFE – Centre for Renewable Energy (**Gabriella Tranell**, leader of SFFE)
10:15 – 10:30 BEST - Board of European Students of Technology (**Franz La Zerte**, ISEE Student)
10:30 – 10:45 IUG NTNU – Engineers without borders (**IUG**, NTNU)
10:40 – 11:00 Coffee break
11:00 – 12:00 Introduction of Renewable Energies in Transportation (**Ann Mari Svensson**, NTNU, Department of Materials Science and Engineering)
12:00 – 13:00 Lunch at Realfagkantina
- Tiller, Trondheim -
13:00 – 17:00 Excursion to the district heating plant in Trondheim Tiller (**Erik Winsnes**, Statkraft Varmer)
- City Center, Trondheim -
19:00 – 22:00 Dinner at Mormors Stue: <http://www.mormor.no/>

Wednesday

- Realfagbygget D3-114 -

- 9:00 – 10:00 Transition to Renewable Energy Systems – Hydropower (**Ånund Killingtveit**, NTNU, Department of Hydraulic and Environmental Engineering)
10:00 – 10:45 Multiregional environmental comparison of low carbon electricity generation (**Evert Bouman**, NTNU, Department of Energy and Process Engineering)
10:45 – 11:00 Coffee break
11:00 – 12:00 Solar Energy in Buildings (**Anne Grete Hestnes**, NTNU, Department of Architectural Design, History and Technology)
12:00 – 13:00 Lunch at Realfagkantina
13:00 – 13:30 26,4 TWh Renewable Energy – Sarepta Energy – Part of the solution (**Michael Momyr**, Sarepta Energy AS)
13:30 – 14:00 Young researcher at Sintef Energy (**Hossein Farahmand**, Sintef Energy)
14:00 – 14:30 Hywind and Offshore Wind Projects in Statoil (**Bjørn Skaare**, Statoil)
14:30 – 15:00 Coffee break
15:00 – 15:30 Company Presentation by Siemens (**Thomas Skånøy**, Siemens)
- Bymarka, Trondheim -
16:00 – 22:00 Taxi to Bymarka, Dinner at Studenterhytta

Thursday

Realfagbygget D3-114

- 9:00 – 10:00 Integration of Renewable Energy into Smart Grid (**Ole-Morten Midtgård**, NTNU, Department of Electric Power Engineering)
10:00 – 10:45 Intro PV-Systems (**Frank Mauseth**, NTNU, Department of Electric Power Engineering)
10:45 – 11:00 Coffee break

11:00 – 12:00 Energy Storage for Renewables (**Steve Völler**, *Sintef Energy*)
 12:00 – 13:00 Lunch break
 - Bergbygget Room E-129 -
 13:00 – 14:00 Solar Cells – lecture and lab visit (**Marisa Di Sabatino Lundberg**, *NTNU, Department of Materials Science and Engineering*)
 - Elkraftbygget Room F-328 -
 14:00 – 15:00 Wind Energy – lecture and lab visit (**Tore Undeland**, *NTNU, Department of Electric Power Engineering*)
 - Realfagbygget E1-118 -
 15:20 – 15:40 Geothermal systems – research and study opportunities (**Magnus Thor Jonsson**, *University of Iceland, Iceland*)
 15:40 – 16:00 Administrative student issues for DTU (**Maria Runnering**, *DTU, Denmark*)
 16:00 – 16:20 How is it to be a student at DTU? (**Joey Alfrink**, *student at DTU, Denmark*)
 16:20 – 16:40 KTH
 - City Center, Trondheim -
 19:00 – 23:59 Dinner at Mikrobryggeriet

- Find the program table on the last page -

- Sponsors -



**INNOVATIVE
SUSTAINABLE
ENERGY
ENGINEERING**

*A Two-year Master Programme
Double Degree in
Energy Engineering*