

Complexity of NTNU Campus Development



Significance of Governance in the Planning process

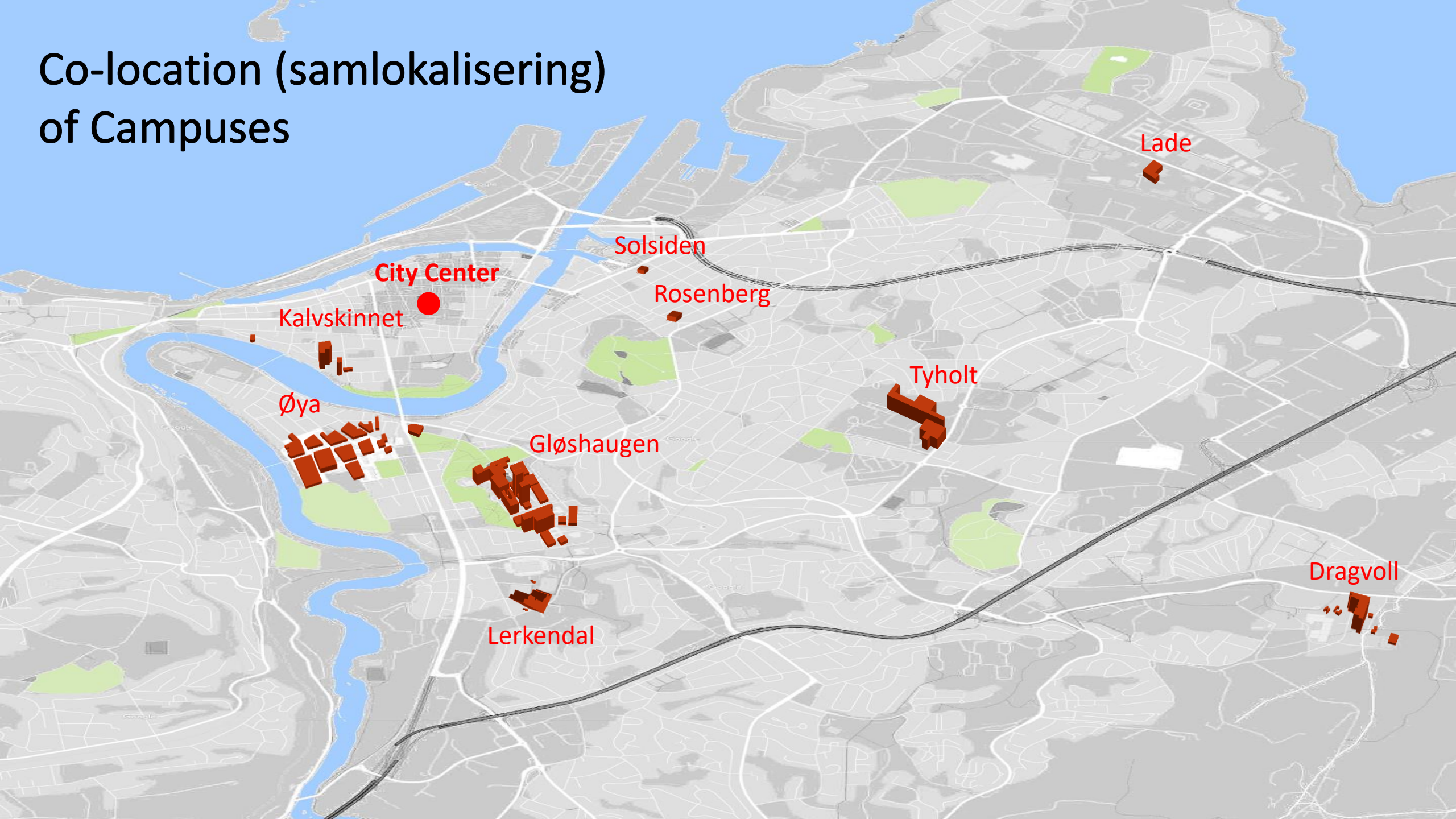




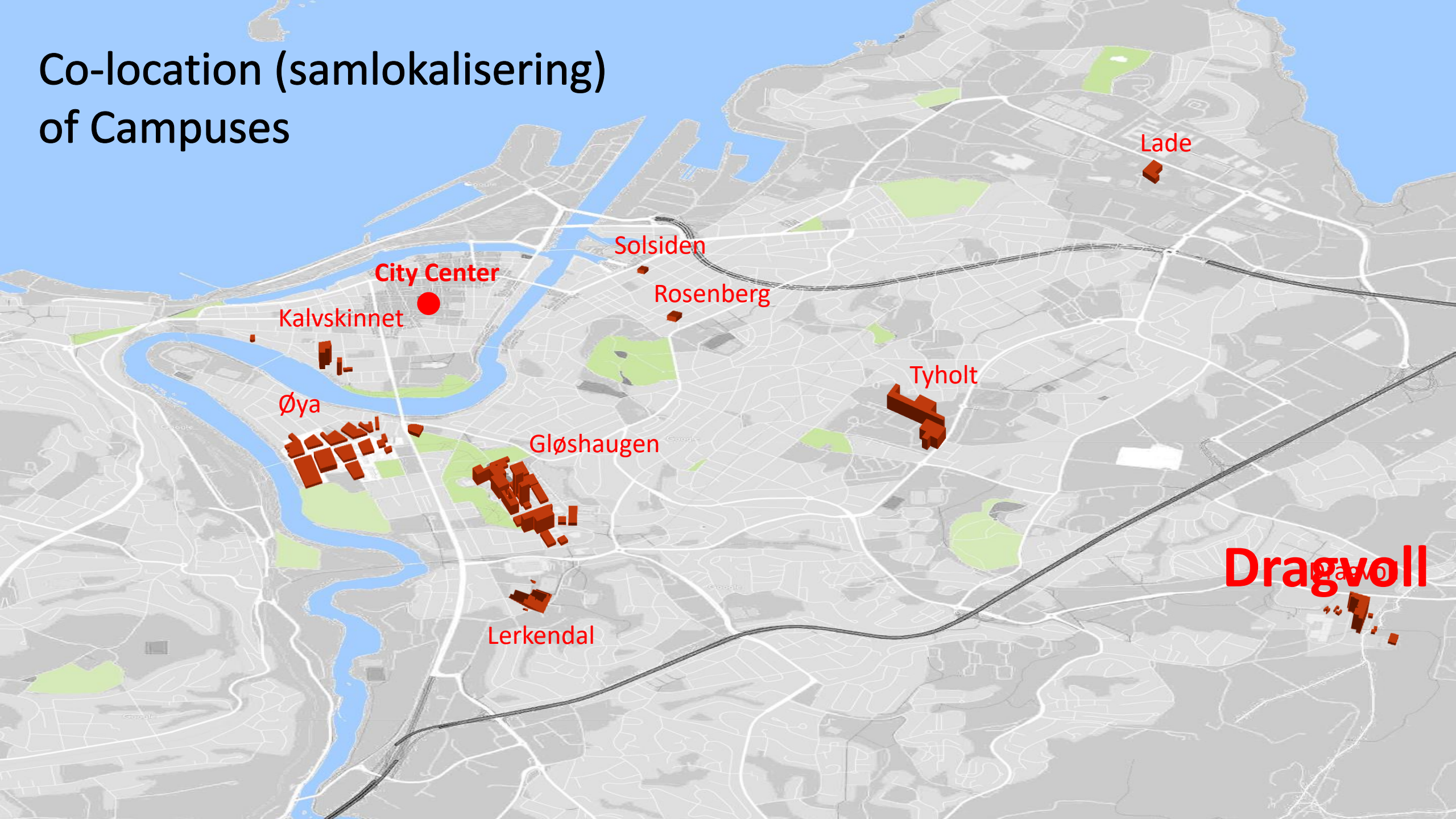


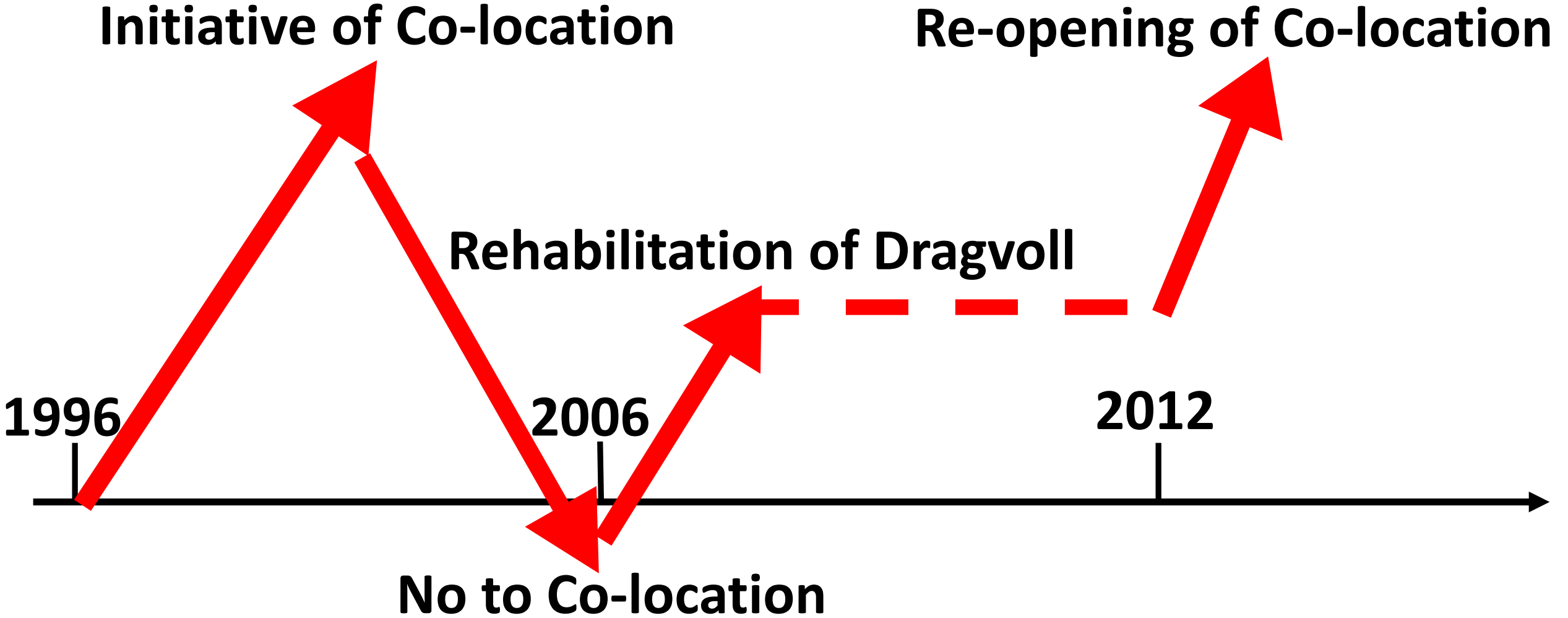
House of Cards

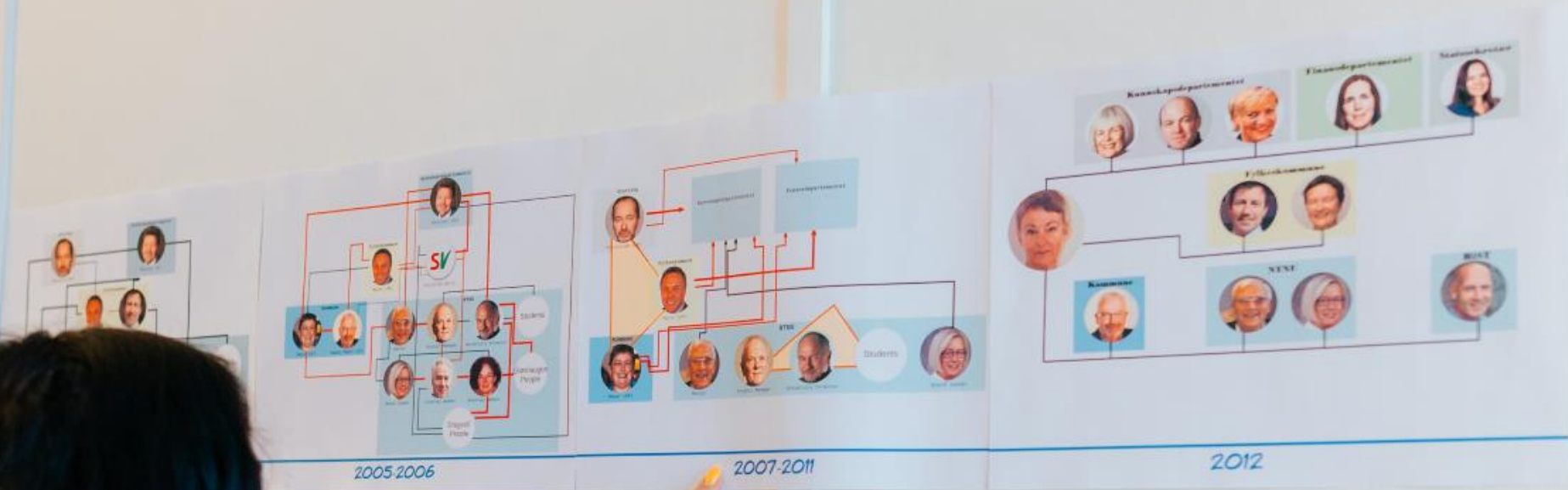
Co-location (samlokalisering) of Campuses



Co-location (samlokalisering) of Campuses







NTNU og kommunen enige om Dragvoll

Abbel så mye plass

ARK LAVPRISER SOMMEREN



Nytt liv i samlokalisering NTNU-Hist

NTNU-Hist har nå fått plass i nye lokaler i Dragvoll. Dette betyr at NTNU-Hist kan tilby et bedre miljø for sine ansatte og studenter. De nye lokalene er moderne og har mye plass. NTNU-Hist er glade for å velkomne alle som kommer til de nye lokalene.

NTNU-HIST

HVORDAN KAN NTNU VIDEREUTVIKLES

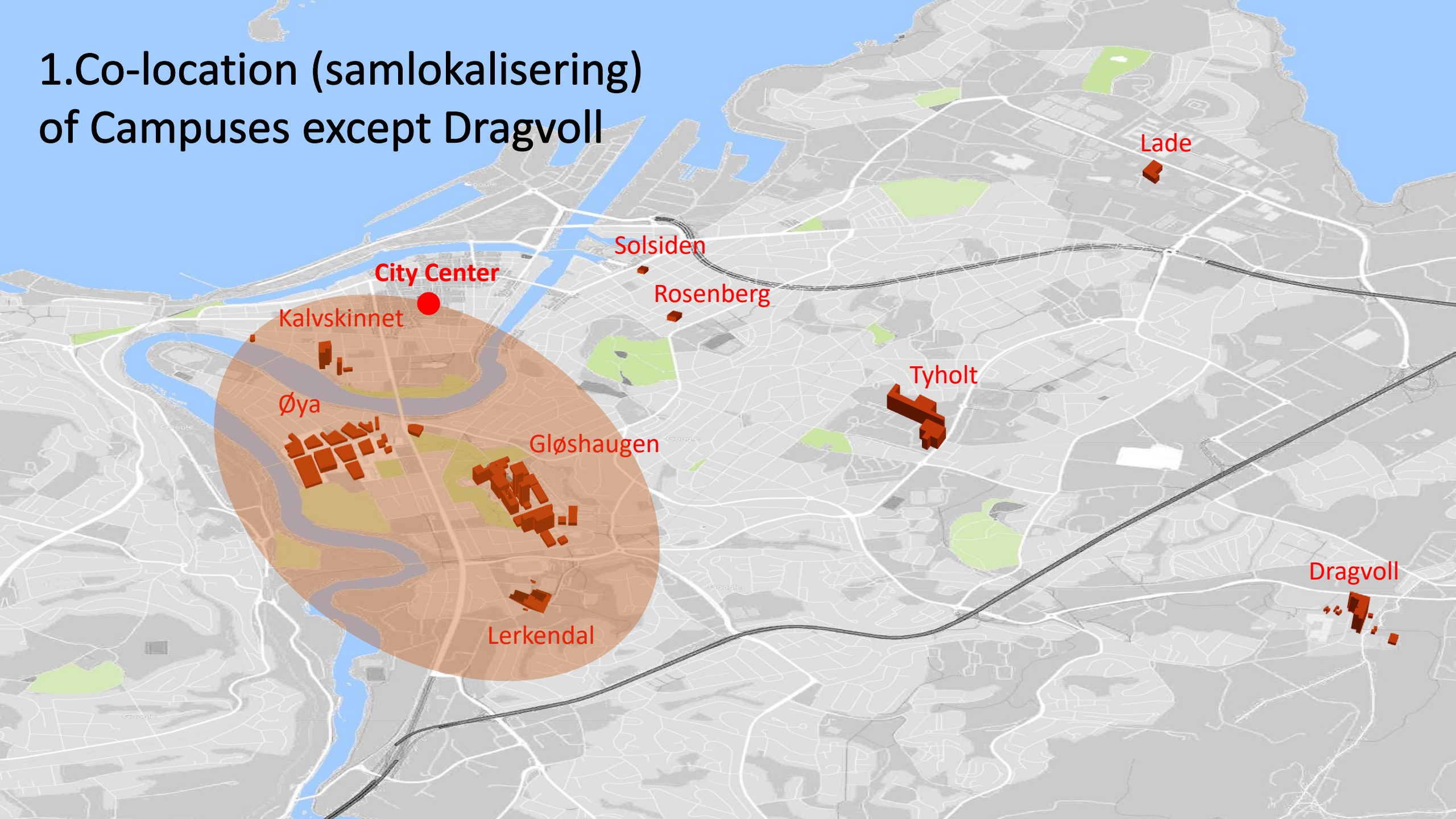


NTNU-Hist er en viktig del av NTNU. Det er viktig at NTNU-Hist utvikles videre. Dette betyr at NTNU-Hist må finne nye måter å samarbeide på og å tilby nye tjenester. NTNU-Hist er glade for å høre fra alle som har ideer til hvordan NTNU-Hist kan utvikles videre.

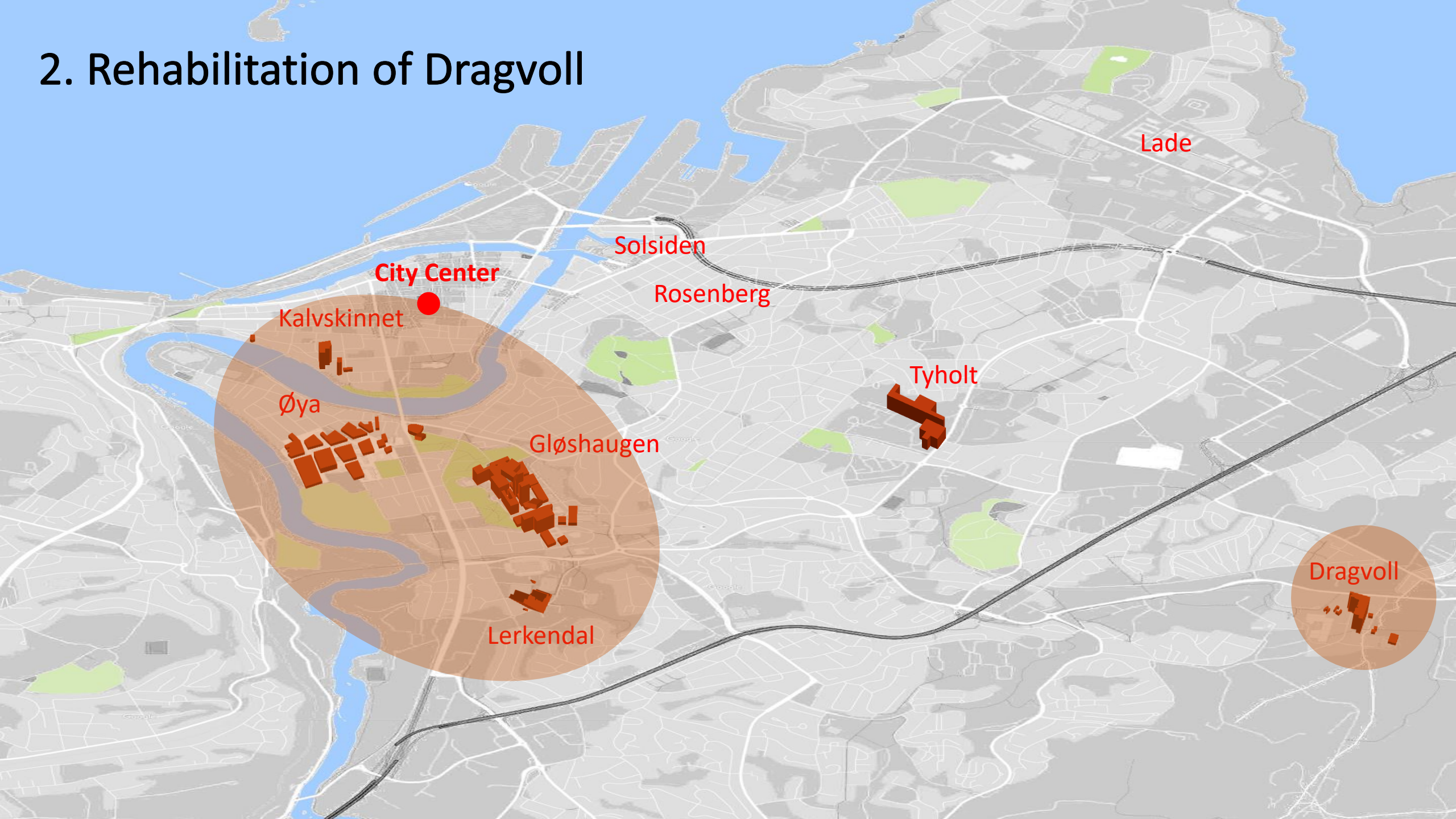
Adresseavisen

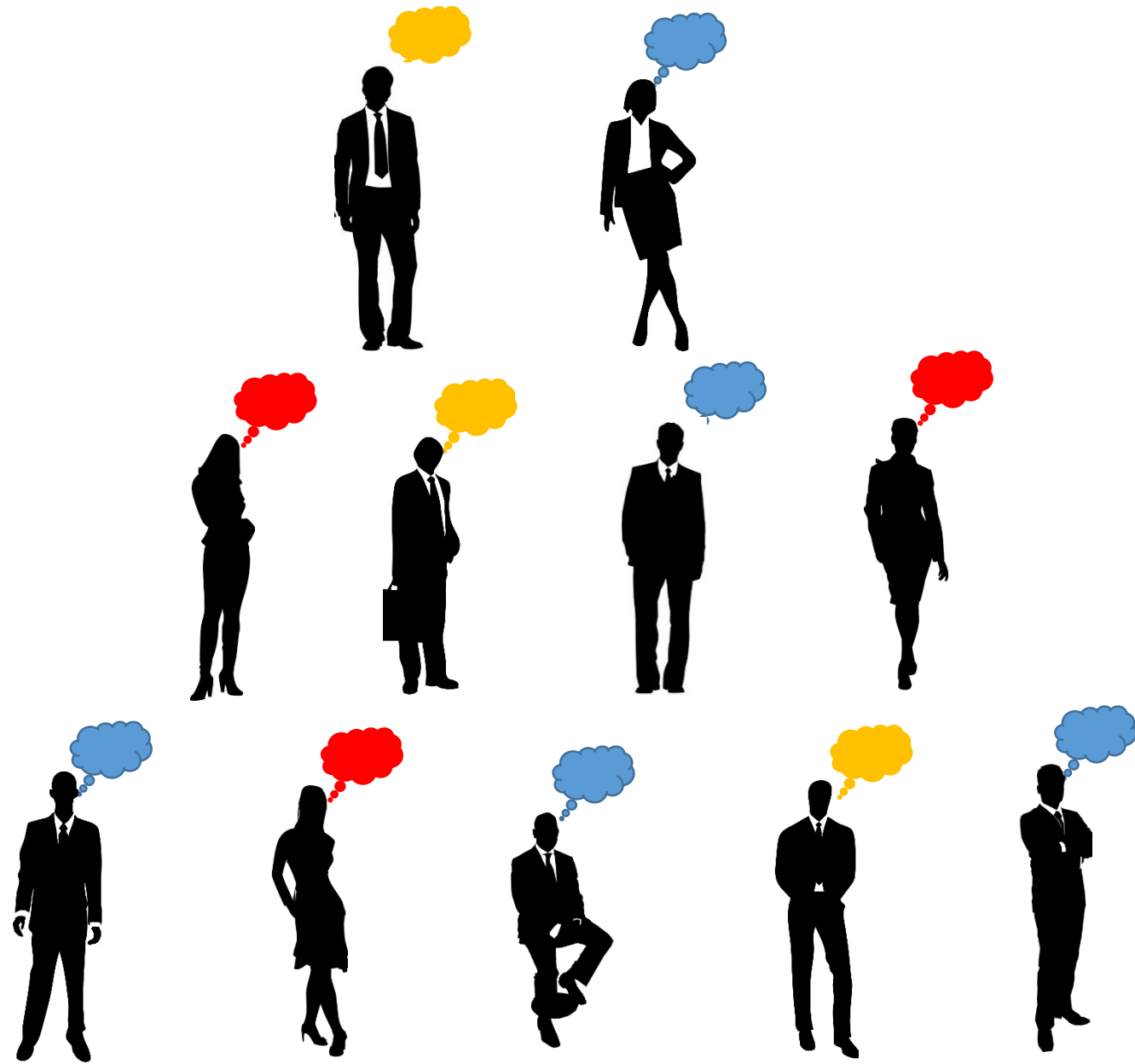
Photo: Julie Gloppe Solem

1.Co-location (samlokalisering) of Campuses except Dragvoll



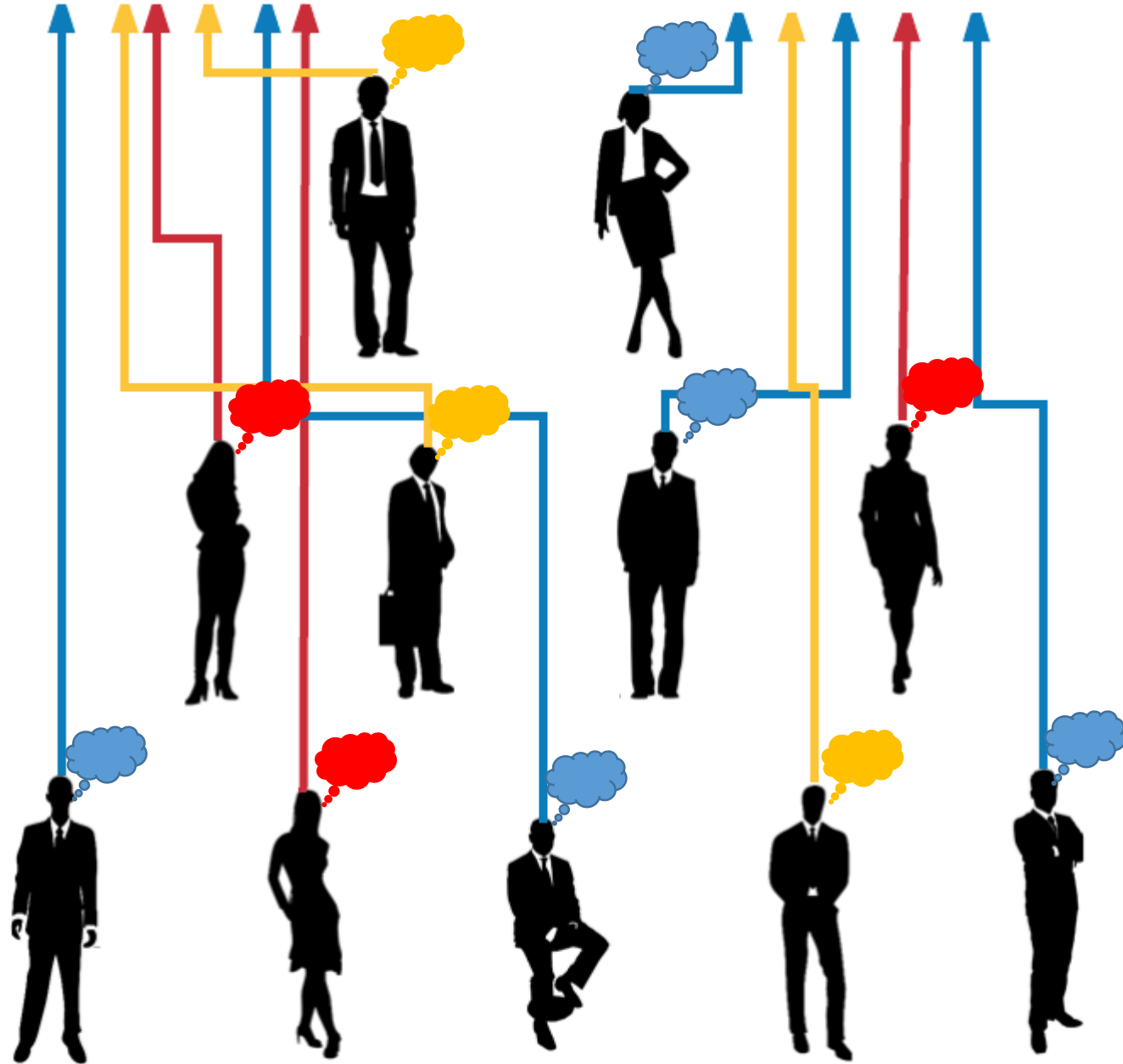
2. Rehabilitation of Dragvoll



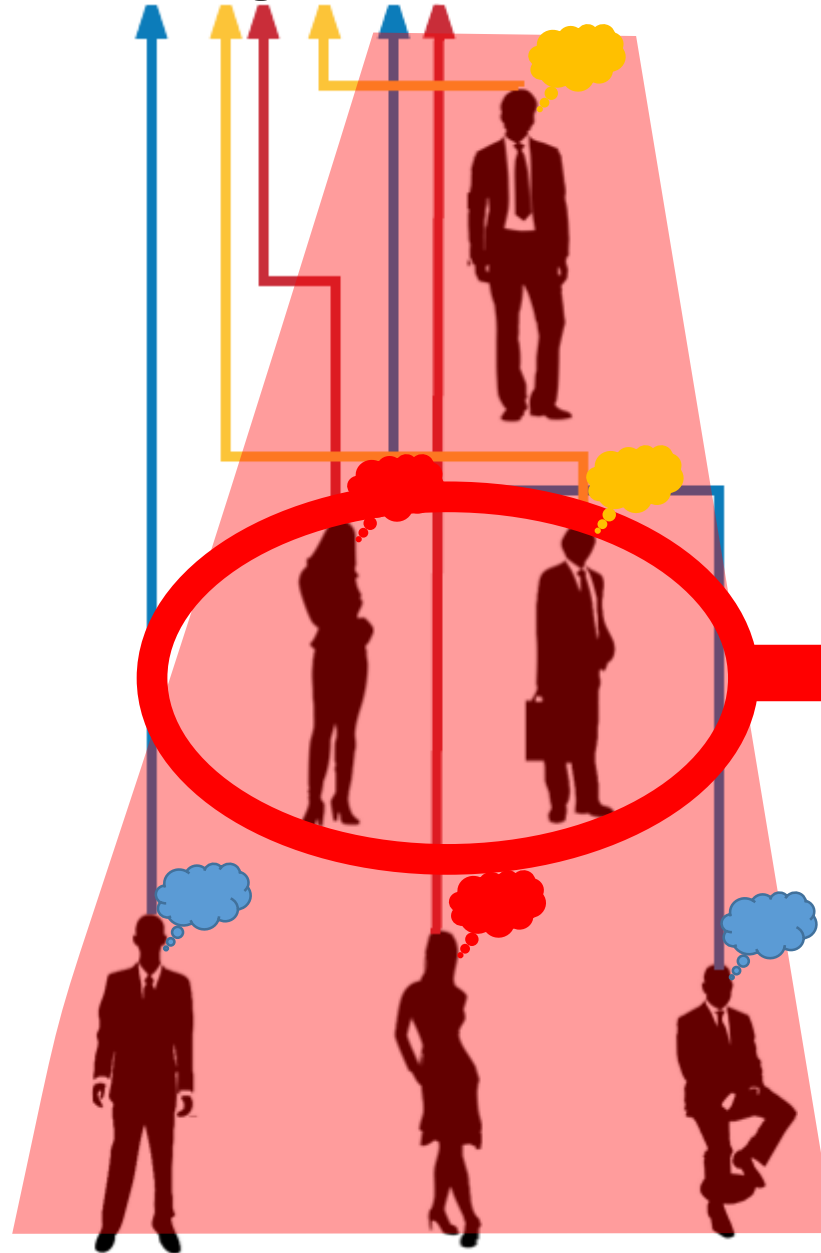


Against Co-location

For Co-location



Stop Co-location



**Rehabilitation
of Dragvoll**

The image features two dark gray silhouettes of human heads in profile, facing each other from the left and right edges of the frame. The space between the two profiles is white. The word 'Opponents' is written in red text within the left silhouette, and the word 'Supporters' is written in dark blue text within the right silhouette.

Opponents

Supporters

Labor Party

Politician

Mayor

County Mayor

Photo: Thor Nielsen

Sabotage The Rehabilitation Of Dragvoll

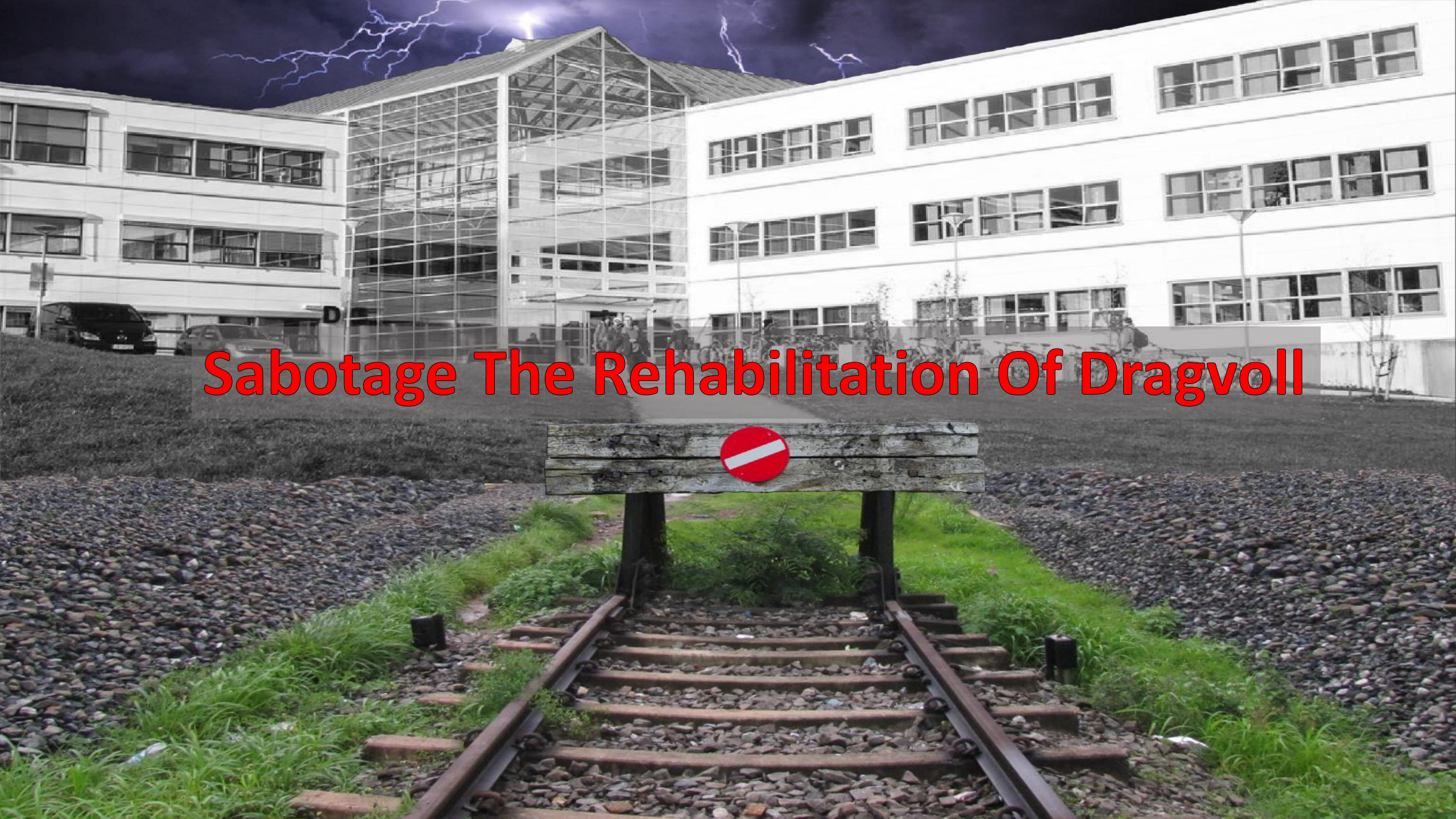


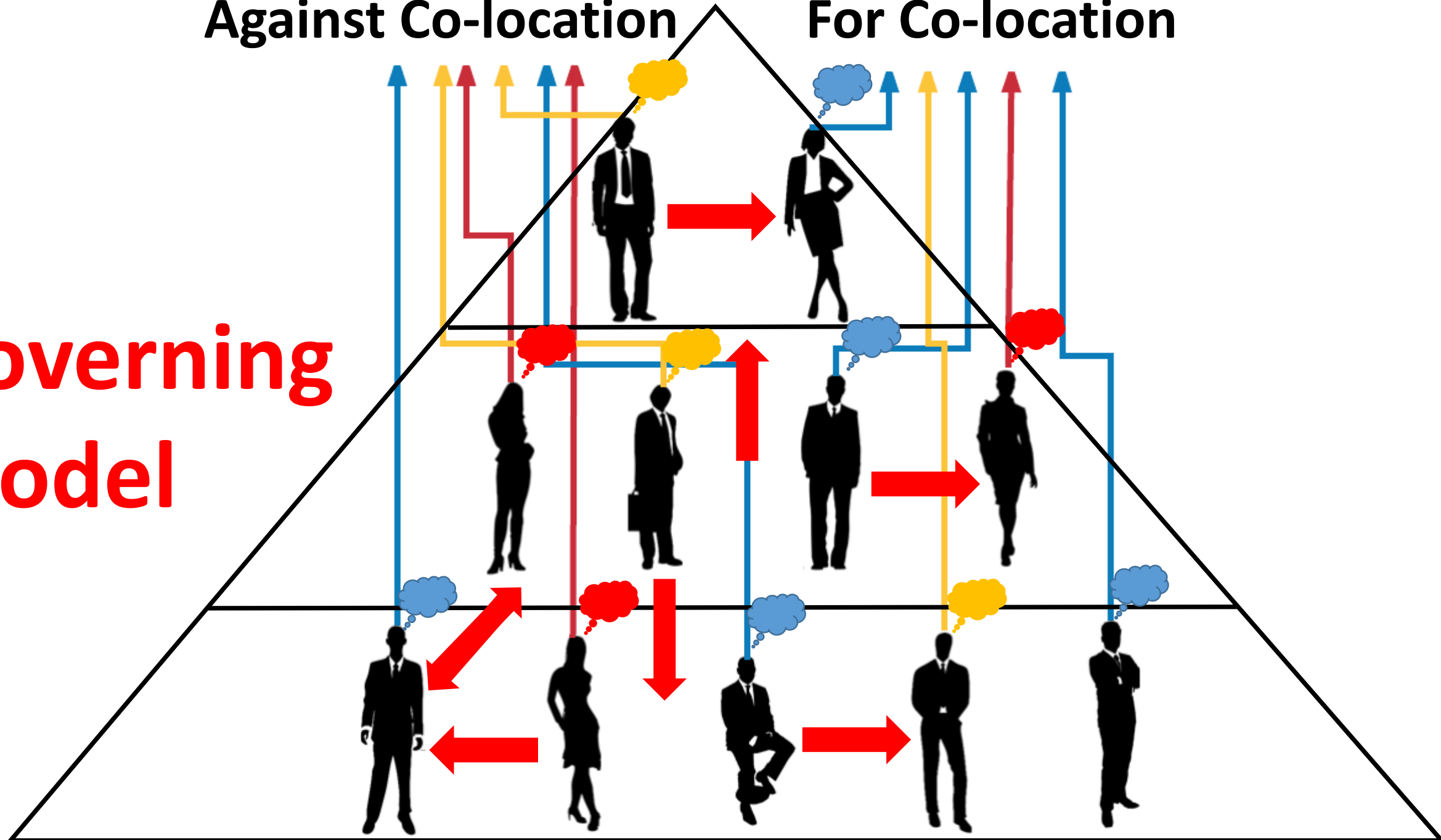


Photo: Thor Nielsen

Against Co-location

For Co-location

**Governing
Model**









Knowledge for a better world

NTNU – internationally outstanding

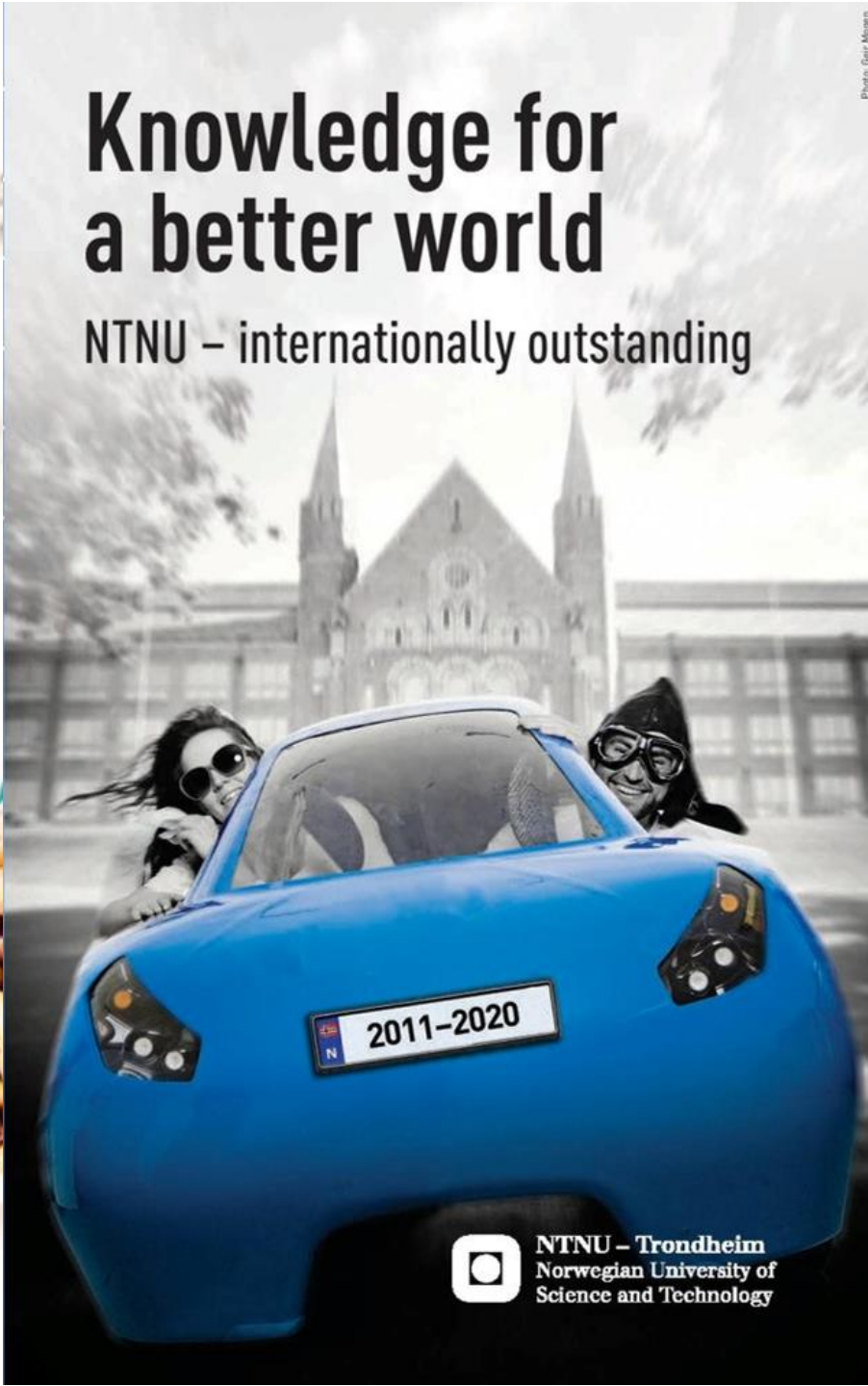


Photo: Geir Mogen

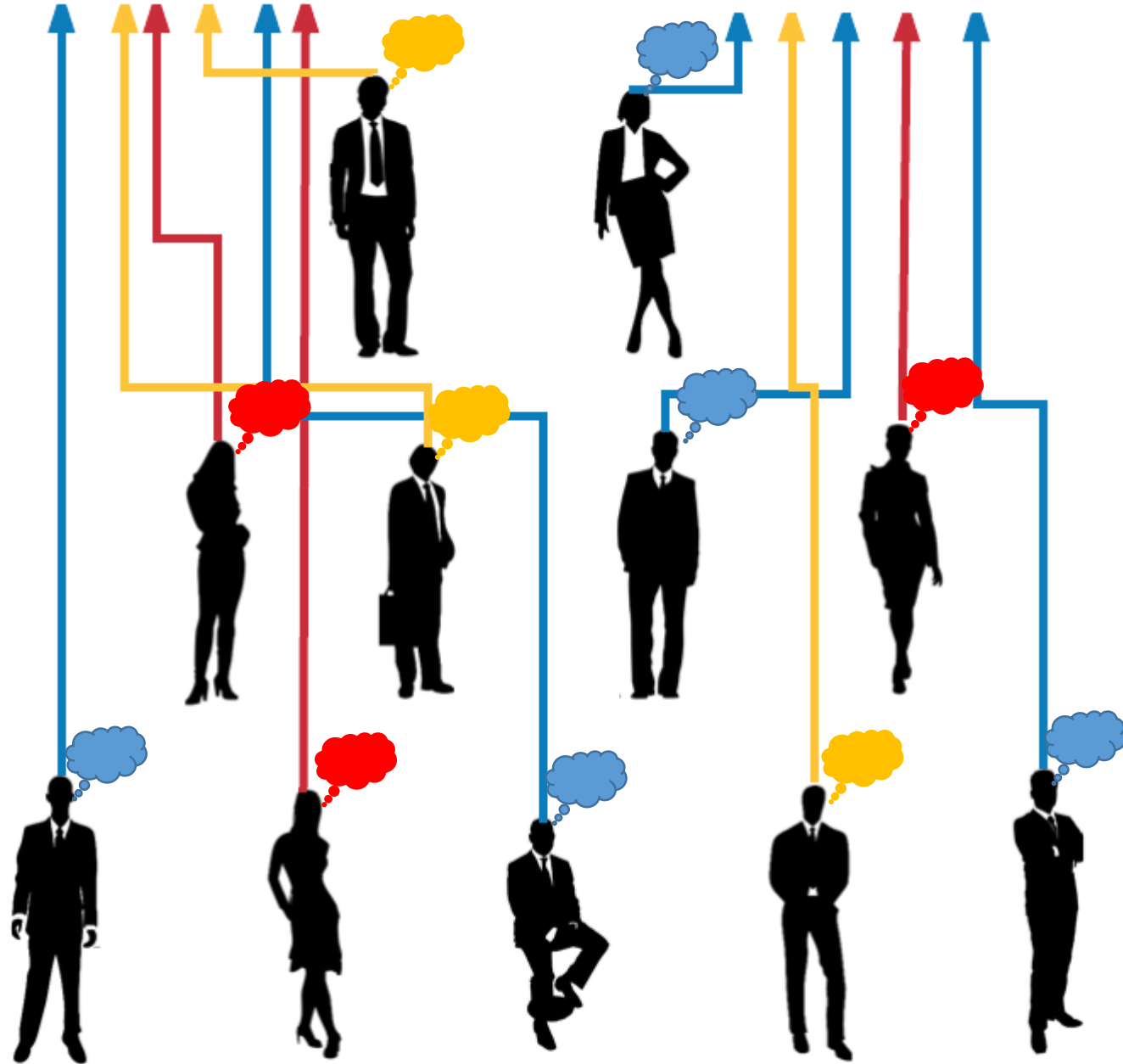


NTNU – Trondheim
Norwegian University of
Science and Technology

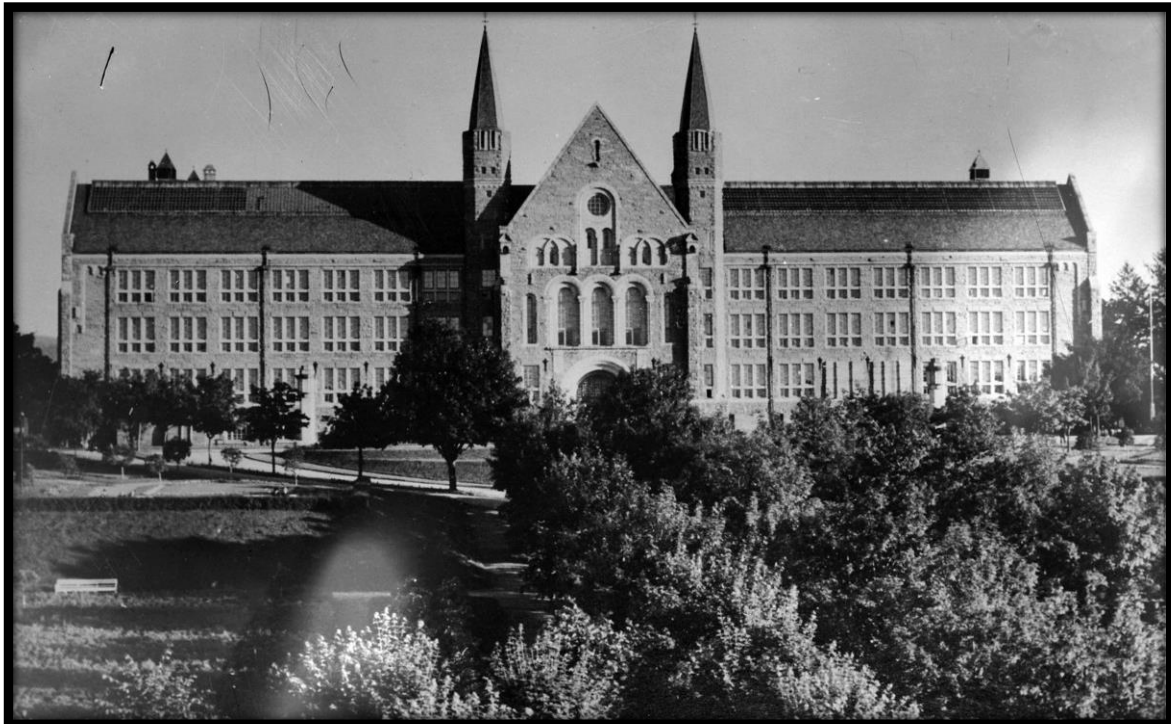
A large, diverse crowd of young people, likely students, is gathered outdoors in a park-like setting. They are looking in various directions, some towards the camera and others away. In the background, a large church with a prominent green spire is visible, surrounded by lush green trees. The scene is set during the day with soft, natural light. The text "Attractive Student City" is overlaid in the center of the image.

Attractive Student City

Against Co-location For Co-location



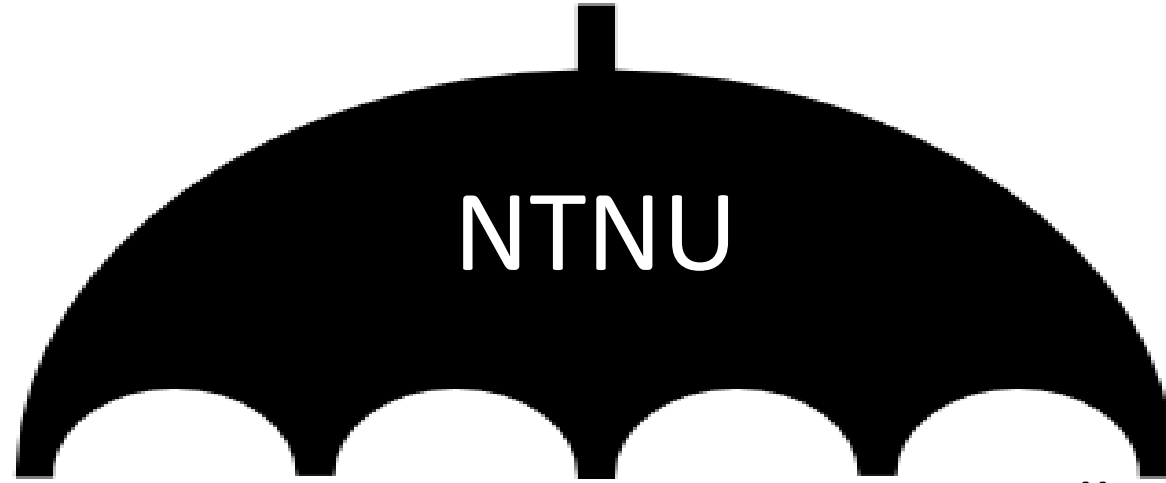
Norwegian Technical School
(NTH), 1910



Norwegian College of Teaching
(NLHT), 1922



1996



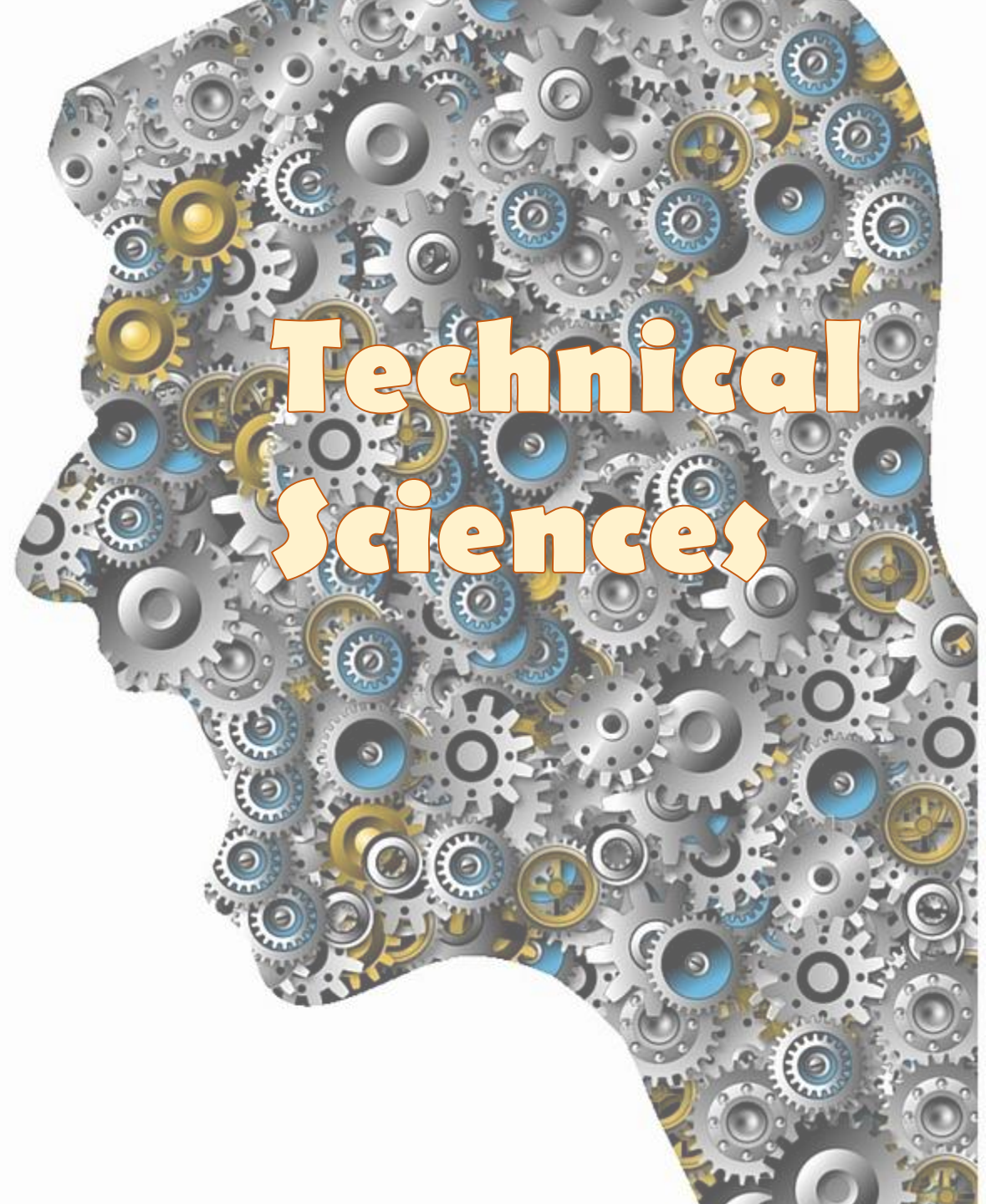
Norwegian Technical School (NTH)

Norwegian College of Teaching (NLHT)





**Social
Sciences**

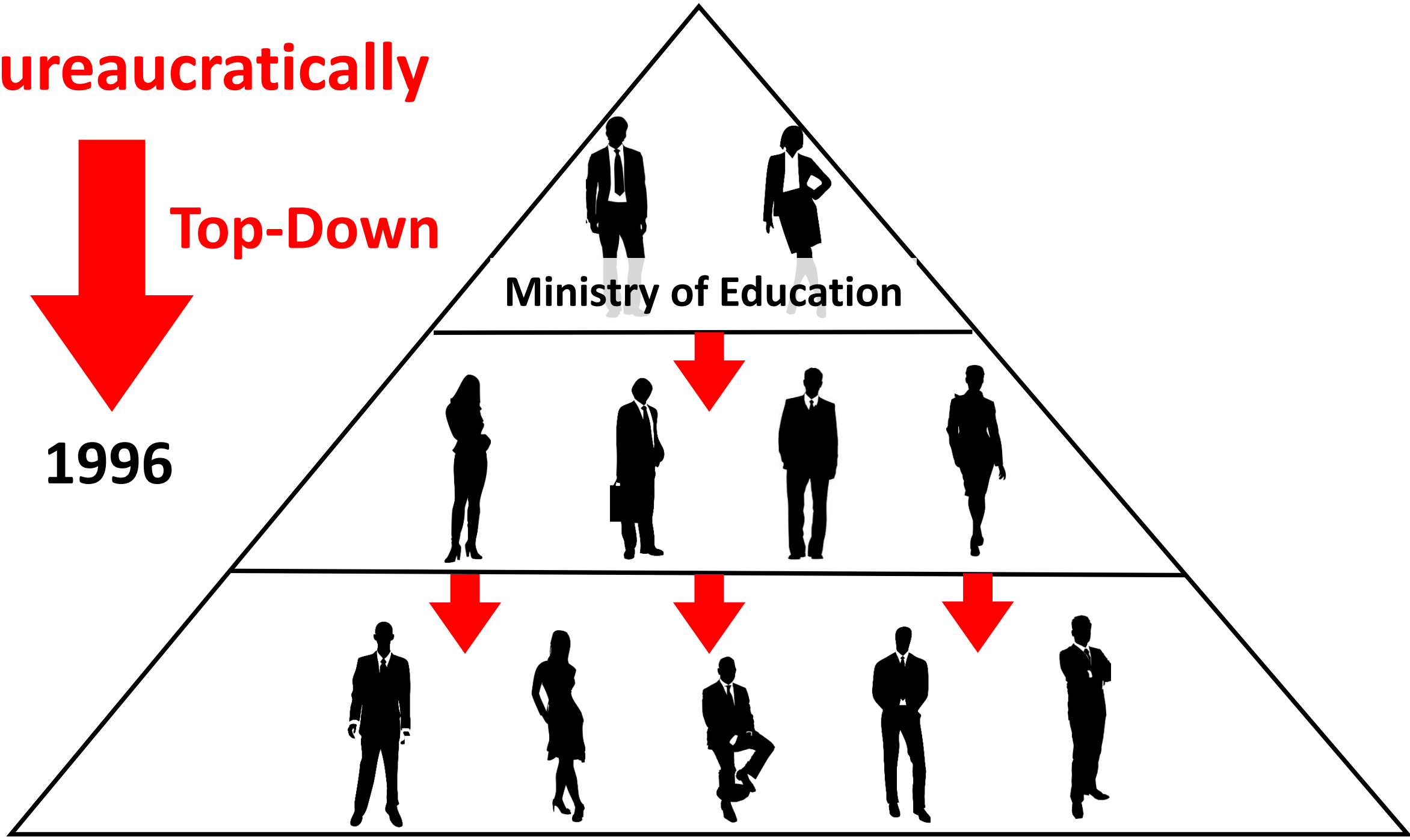


**Technical
Sciences**

Bureaucratically

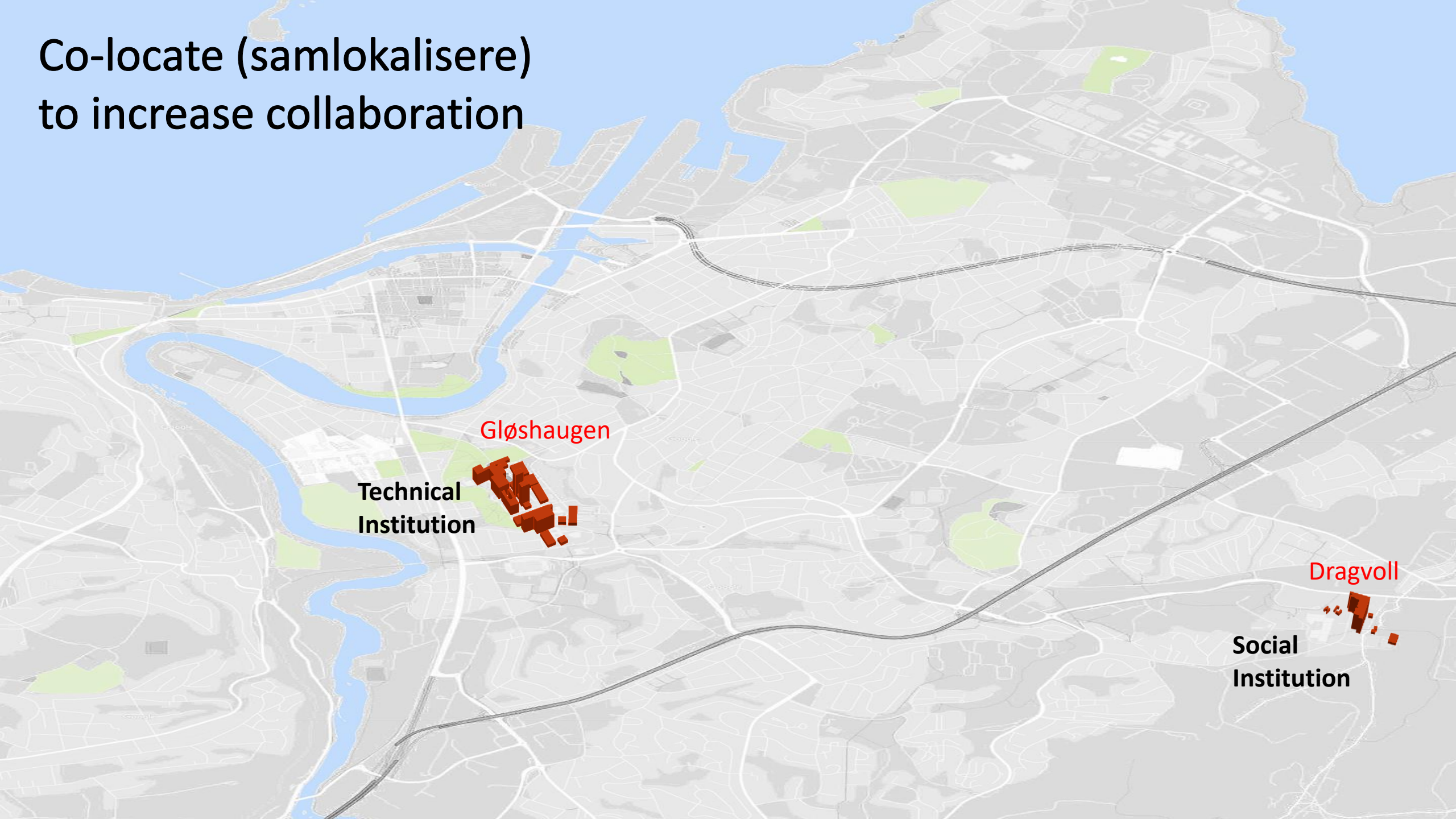
Top-Down

1996





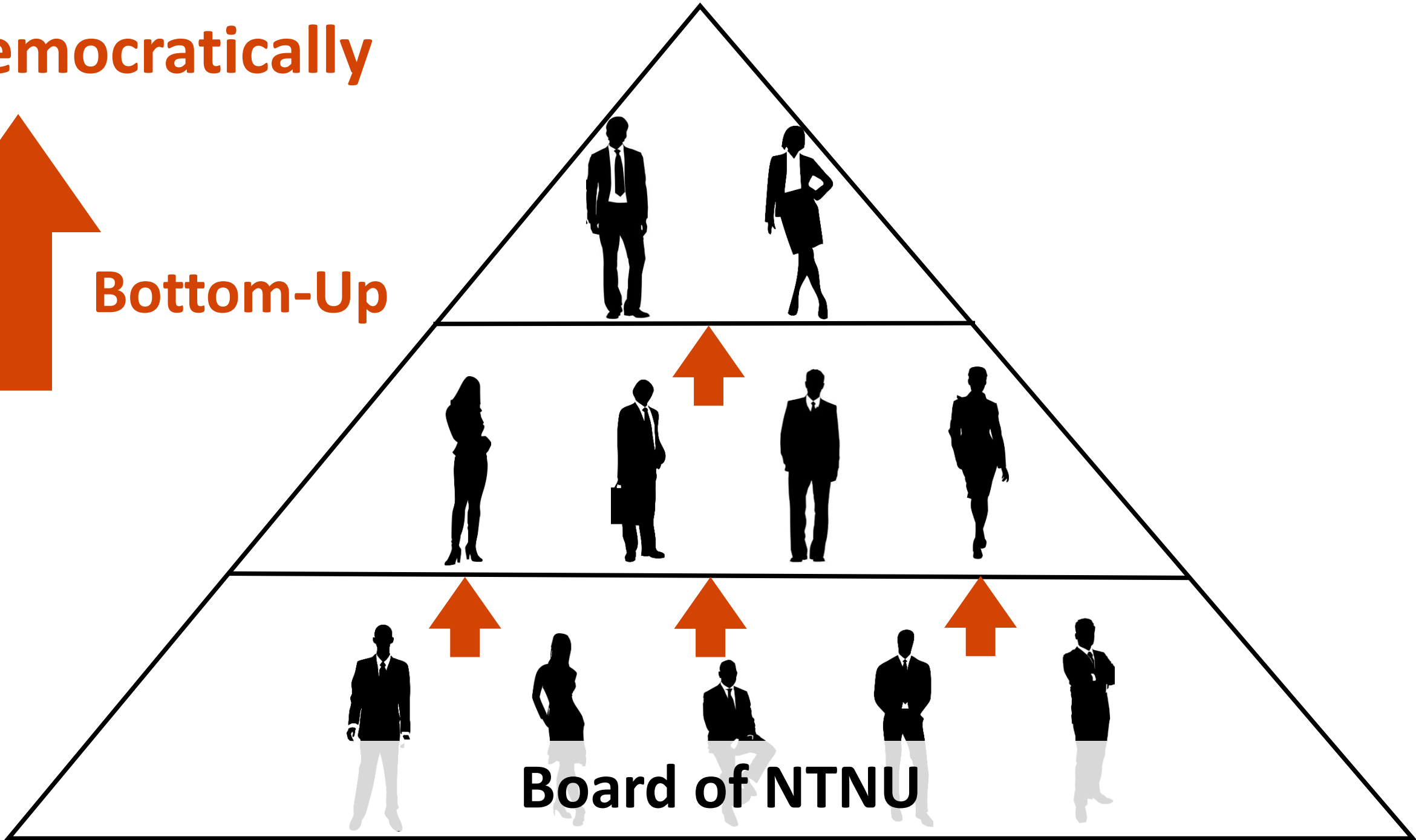
Co-locate (samlokalisere)
to increase collaboration



Democratically



Bottom-Up



Board of NTNU



Yes to co-location

NTNU Leadership wants
University Development

Municipality wants
City Development

Government: No to Co-location




Employees: No to Co-location

A group of people are seated in a room with wooden paneling. In the foreground, a man with glasses and a mustache holds a white sign that reads "100 Years Perspective! Don't sell Dragvoll!". To his right, an older man with glasses and a blue shirt under a grey jacket sits with his arms crossed, smiling. Behind them, several other people are visible, some looking down and others looking towards the camera. The sign is held up by the man in the foreground, partially obscuring his face and the people behind him.

100 Years
Perspective!
Don't sell Dragvoll!

Employees: No to co-location

- 
- ✓ No to Trondheim Municipality
- ✓ No optimism for collaboration
- ✓ Natural Resistance to any change



**State Secretary
Ministry of Education**

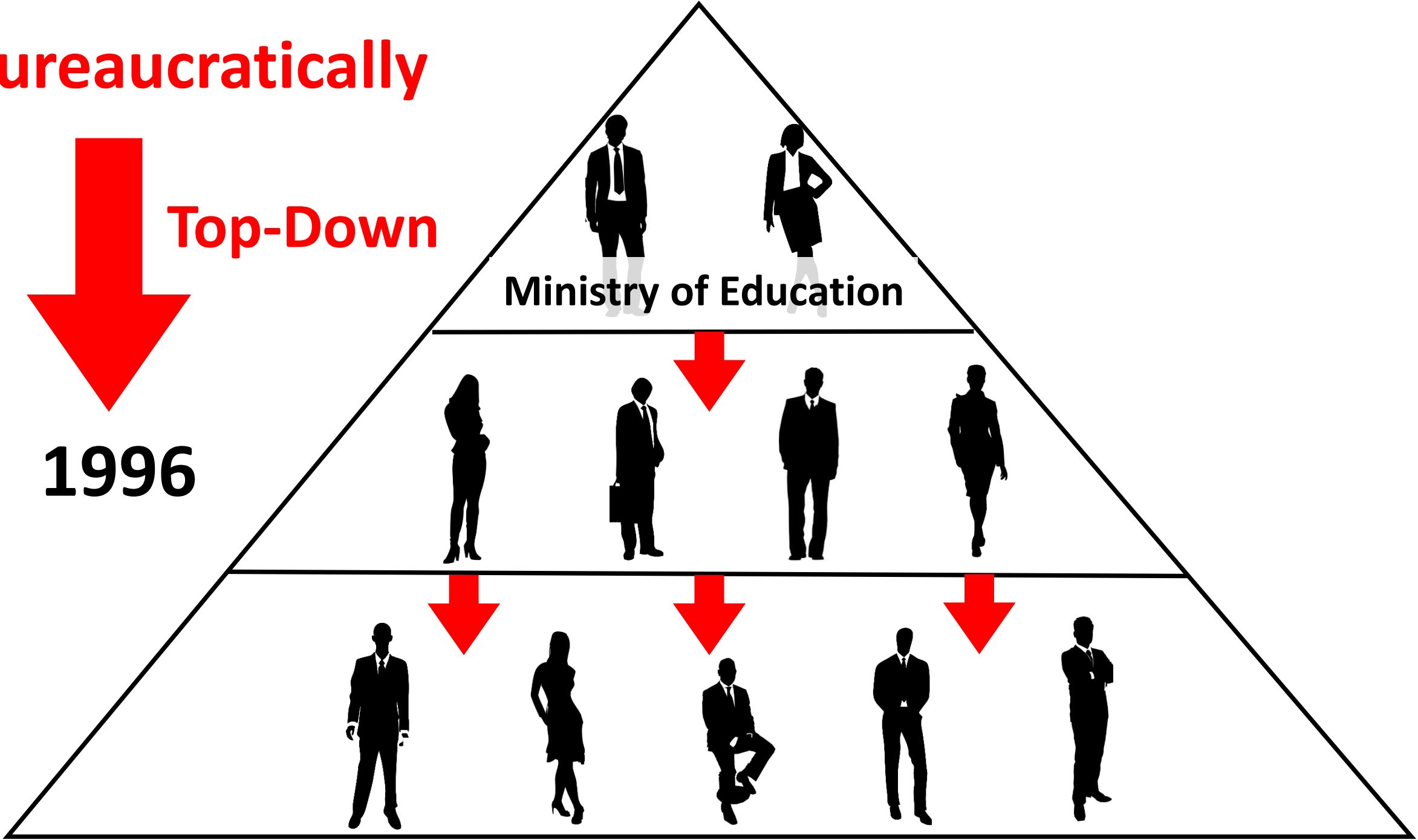
Ragnhild Setsaas



Bureaucratically

Top-Down

1996

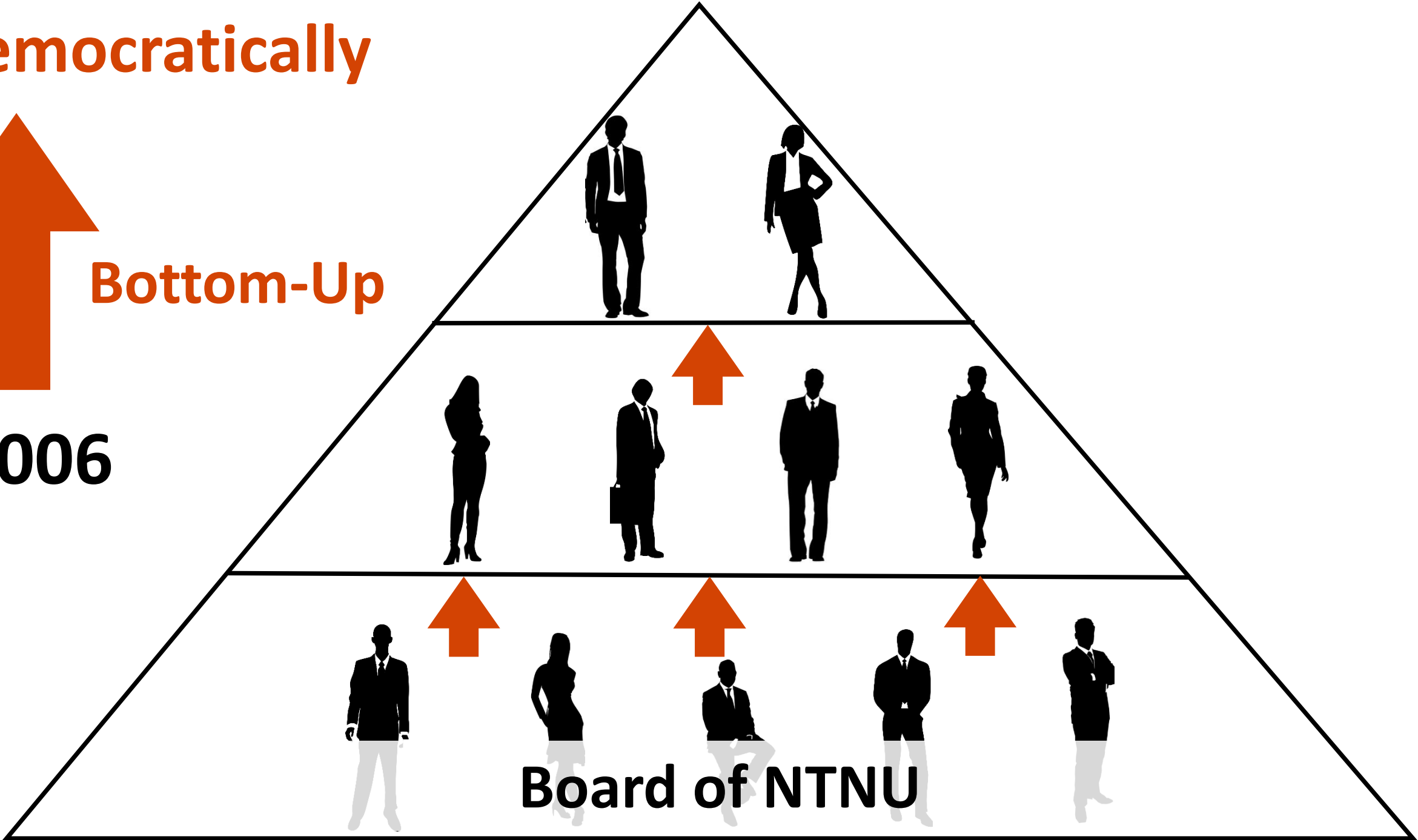


Democratically

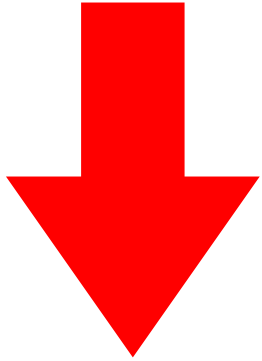


Bottom-Up

2006



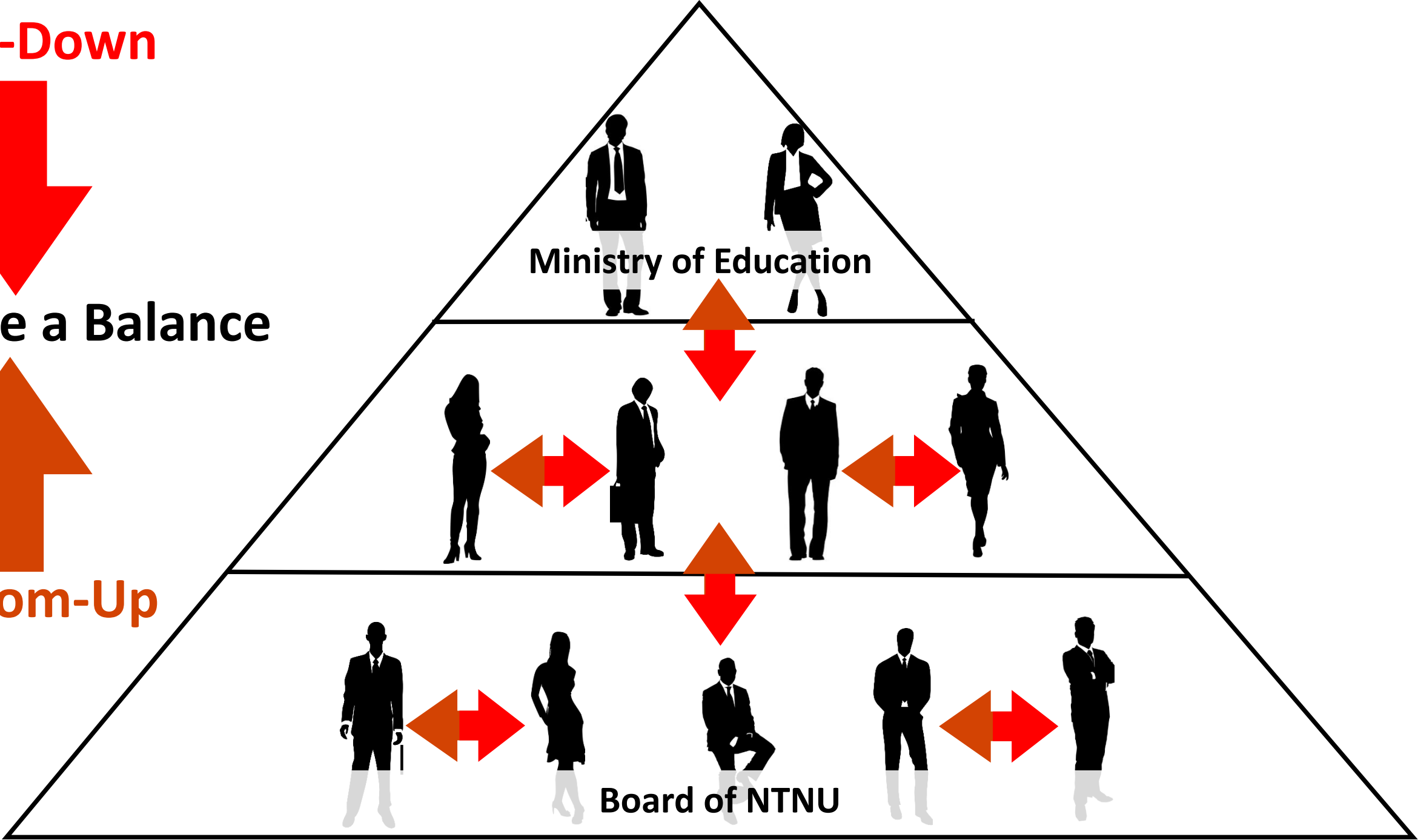
Top-Down



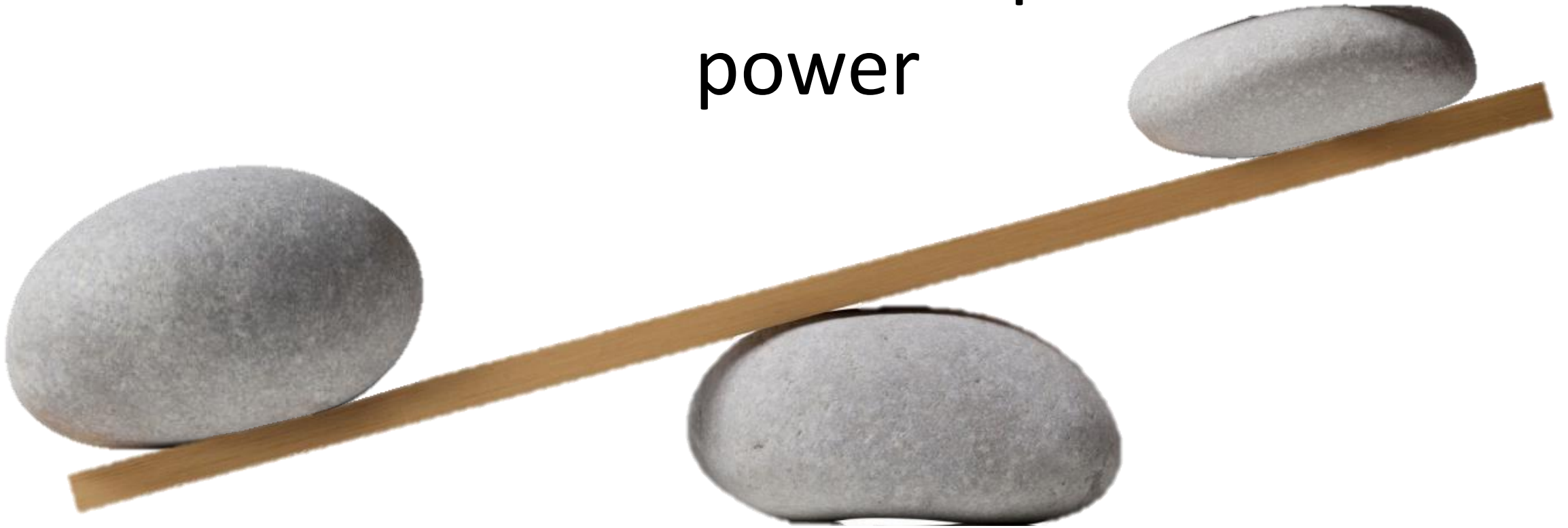
Strike a Balance



Bottom-Up



No governing method
can completely
overcome unequal
power



Ministry of Education



Weaker Party



Acting As A Third Side



Ministry of Education