

---

# **NTNU Boligformidling**

## **Information about NTNU housing**

---



NTNU International Researcher Support (NIRS)  
[bolig@adm.ntnu.no](mailto:bolig@adm.ntnu.no)

## **NTNU's Housing Policy**

NTNU's housing policy states "permanent or temporary foreign employees and visiting scientists who will spend more than **1 month** at NTNU should have an offer of an accommodation when they arrive at NTNU. This may be either in housing owned by NTNU or in privately owned housing. This housing is primarily intended to cover the need for transitional housing (up to 3 months) and short-term housing (from 1 month up to 12 months) and is not intended to be permanent housing".

Pets are not permitted in NTNU accommodation.

Accommodation is allocated based on availability and in accordance with NTNU's Housing Policy. All applications must be submitted through the online application portal, LYDIA. Follow the information on this website: <https://www.ntnu.edu/nirs/housing>

The following criteria are followed in the allocation of housing both for NTNU's own apartments and for apartments that are allocated via Boligstiftelsen NTNU and SINTEF:

1. Foreign employees with families from countries with a visa requirement.
2. Foreign employees with families from countries outside the Nordic countries that do not have a visa requirement.
3. Foreign employees without families from countries with a visa requirement.
4. Foreign employees without families from countries from outside of the Nordic region that do not have a visa requirement.

**\* Norwegian citizens, unfortunately cannot apply for this service**

NTNU has agreements with the following partners:

**Comfort Hotel Park Trondheim.**

20 suites offered at a reduced rate, for price contact the hotel.

Includes the following in the price:

- Breakfast, coffee / tea in the lobby all day, wireless internet, access to guest PC.
- Bicycle Rental
- Access to washer and dryer
- Access to relax area with sauna and gym

[https://www.nordicchoicehotels.com/comfort/comfort-hotel-park/about/?\\_ga=1.213240532.1988324642.1425371874](https://www.nordicchoicehotels.com/comfort/comfort-hotel-park/about/?_ga=1.213240532.1988324642.1425371874)

We also have an agreement with a letting agency, **UTLEIEMEGLEREN.**


This service is for people staying for more than 1 year. Should an applicant select a dwelling in the company's portfolio, there is no charge. For extra searches, viewings, and advertising on behalf of applicant, charges will be determined based on agreement.

# Application form

You can find the link to the online application form on this web site:

<https://www.ntnu.edu/nirs/housing>

To be considered for accommodation, you must complete the online application form. Ensure that you fill in all the required fields. We recommend submitting your application well in advance.

**New application** **My applications** 

Male/Female

Age

Date of birth (DD.MM.YYYY)

Citizenship

Position at NTNU (Guest researcher or Employed/PhD)

From (DD.MM.YYYY)

To (DD.MM.YYYY)

Contact person at NTNU

HOUSING NEEDS

Rental period from (DD.MM.YYYY)

Rental period to (DD.MM.YYYY)

Preferred housing option (priority 1,2,...)

- Studio Apartment (Bedsitter)

- 1 Bedroom Apartment

- 2 Bedroom Apartment

For larger accommodation, give additional information

Use of letting agency (Yes or No):

Utleiemegleren AS can assist you with finding an apartment price NOK 6250, more information on our web page.  
If NTNU or Boligstiftelsen NTNU/SINTEF-apartment is unavailable, do you require housing services from Utleiemegleren AS?

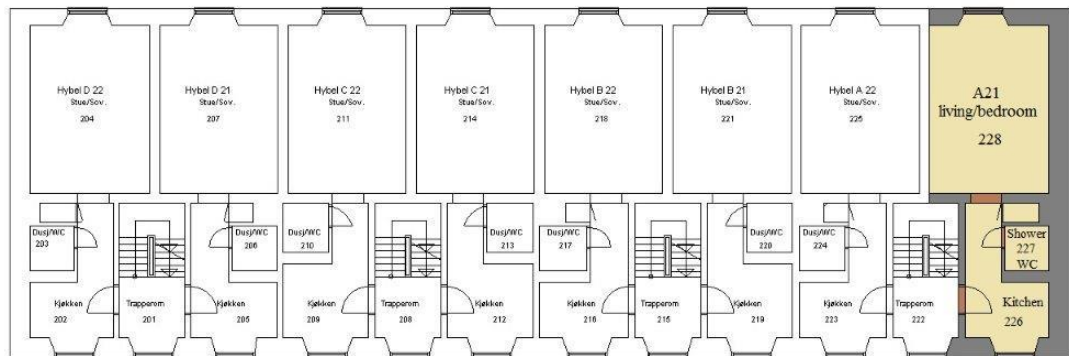
\* Any other information concerning your application can also be entered here.

## **Accommodation offered by NTNU**

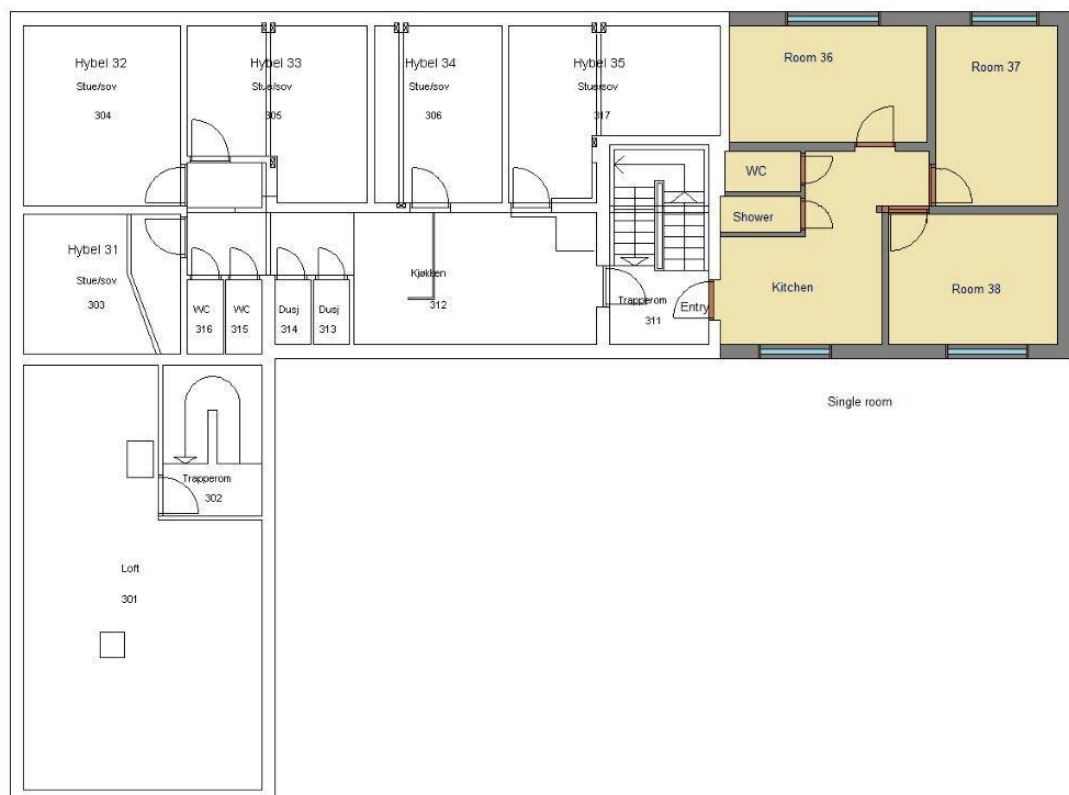
Hans Osnes' veg 12	2 bedrooms apartment
Hans Osnes' veg 12	2 bedrooms apartment
Hans Osnes' veg 12	5 bedrooms apartment
Gløshaugveien 5	3 bedrooms apartment
Gløshaugveien 5	1 bedroom apartment
Gløshaugveien 5	1 bedroom apartment
Gløshaugveien 12	1 bedroom apartment
Gløshaugveien 12	1 bedroom apartment
Gløshaugveien 12	1 bedroom apartment
Gløshaugveien 12	1 bedroom apartment
Geelmuydens gate 1	1 bedroom apartment
Geelmuydens gate 1	1 bedroom apartment
Geelmuydens gate 1	5 bedrooms apartment
Sollia 29	3 bedrooms apartment
Edgar B. Schieldrops veg 6C	1 bedroom apartment
Edgar B. Schieldrops veg 22D	1 bedroom apartment
Arne Fjellbus veg 6D	1 bedroom apartment
Gløshaugveien 19	2 bedrooms apartment
Gløshaugveien 19	3 single rooms
Grensen 13	3 single rooms
Klostergata 18	1 bedroom apartment
Klostergata 18	1 bedroom apartment

	Tenancy period 1 year Electricity is not included in the rent.
	Electricity is included in the rent. Short-term (1 – 6 months)

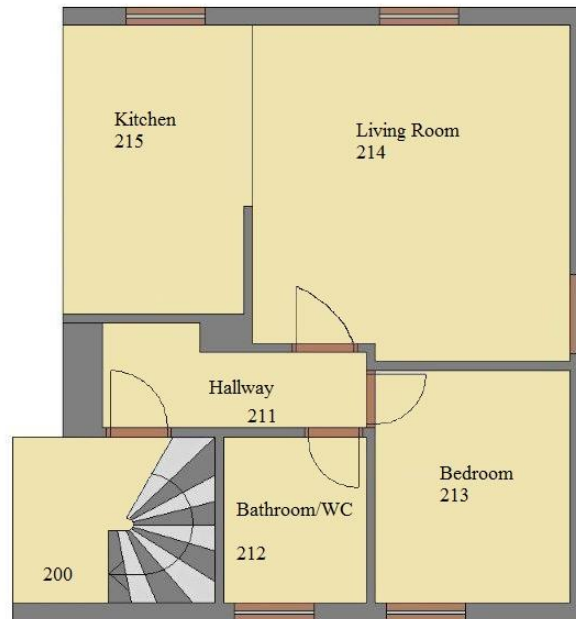
The floor plans shown here are examples only and may not be the actual accommodation offered.



### Studio/bedsitter



### Single room



One bedroom apartment



Two-bedroom apartment

# Housing Foundation NTNU and SINTEF/

## Boligstiftelsen NTNU og SINTEF

The main purpose of the Housing Foundation is to manage and provide accommodation for international temporary or short-term academic staff at NTNU and SINTEF. The allocation of housing is governed by NTNU's housing policy. Only PhD students, guest researchers and fellows from NTNU are eligible to apply.

To apply for housing, please submit an application by following instructions on this website: <https://www.ntnu.edu/nirs/housing>

### Jonsvannsveien

- **Apartments:** 66
- **Layout:** Kitchen, living room, 1-2 bedrooms, hallway, and combined toilet/shower.
- **Utilities:** Electricity (heating, hot water etc.) not included.
- **Storage:** 2 basement storage rooms and 1 loft storage room per apartment.
- **Internet:** Included in rent.
- **Furnishing:** Unfurnished.
- **Deposit:** Equivalent to 3 months' rent.
- **Parking:** Available.
- **Laundry:** Located in the basement at Jonsvannsveien 93A and 105C.

### Balders veg

- **Apartments:** 18
- **Layout:** Kitchen, living room, 1- 2 bedrooms, hallway, separate toilet and shower.
- **Utilities:** Electricity (heating, hot water, etc.) not included.
- **Internet:** Included in rent.
- **Furnishing:** Unfurnished.
- **Deposit:** Equivalent to 3 months' rent.
- **Parking:** Available.
- **Laundry:** Located in the basement at Balders veg 3C and 5C.

For additional information, please visit the Housing Foundation NTNU and SINTEF's website: <https://boligstiftelsen.no/>