
NTNU Boligformidling

Information about NTNU housing



NTNU International Researcher Support (NIRS)
bolig@adm.ntnu.no



NTNU – Trondheim
Norwegian University of
Science and Technology

NTNU Housing Policy

NTNUs' housing policy states "permanent or temporary foreign employees and visiting scientists who will spend more than **1 month** at NTNU should have an offer of an accommodation when they arrive at NTNU. This may be either in housing owned by NTNU or in privately owned housing. This housing is primarily intended to cover the need for transitional housing (up to 3 months) and short-term housing (from 1 month up to 12 months) and is not intended to be permanent housing".

Pets are not permitted in NTNU accommodation.

Accommodation is granted according to availability and in accordance with NTNUs' Housing Policy: All applications must be submitted via the application gateway/ LYDIA Portal:

<http://lydiaweb.itea.ntnu.no/HousingApplication/Demand/NewDemand.aspx>

The following criteria are followed in the allocation of housing both for NTNU's own apartments and for apartments that are allocated via Boligstiftelsen NTNU and SINTEF:

1. Foreign employees with families from countries with a visa requirement.
2. Foreign employees with families from countries outside the Nordic countries that do not have a visa requirement.
3. Foreign employees without families from countries with a visa requirement.
4. Foreign employees without families from countries from outside of the Nordic region that do not have a visa requirement.

*** Norwegian citizens, unfortunately cannot apply for this service**

NTNU has agreements with the following partners:

Comfort Hotel Park Trondheim.

20 suites offered at a reduced rate, for price contact the hotel.

Includes the following in the price:

- Breakfast, coffee / tea in the lobby all day, wireless internet, access to guest PC.
- Bicycle Rental
- Access to washer and dryer
- Access to relax area with sauna and gym

<https://www.nordicchoicehotels.com/comfort/comfort-hotel-park/about/? ga=1.213240532.1988324642.1425371874>


We also have an agreement with Norway's largest letting agency,
UTLEIEMEGLEREN

This service is for people staying for more than 1 year. Should an applicant select a dwelling in the company's portfolio there is no charge. For extra searches, viewing, advertising on behalf of applicant etc. the charge is from NOK 6 250.

Application Format

<http://lydiaweb.itea.ntnu.no/HousingApplication/Demand/NewDemand.aspx>

Please make sure that you fill out all the sections. We recommend you submit the application well in advance.

New application **My applications** 

Male/Female Age Date of birth (DD.MM.YYYY) Citizenship

Position at NTNU (Guest researcher or Employed/PhD) From (DD.MM.YYYY) To (DD.MM.YYYY)

Contact person at NTNU

HOUSING NEEDS

Rental period from (DD.MM.YYYY) Rental period to (DD.MM.YYYY)

Preferred housing option (priority 1,2,...)

- Studio Apartment (Bedsitter) - 1 Bedroom Apartment - 2 Bedroom Apartment

For larger accommodation, give additional information

Use of letting agency (Yes or No):

Utleiemegleren AS can assist you with finding an apartment price NOK 6250, more information on our web page.
If NTNU or Boligstiftelsen NTNU/SINTEF-apartment is unavailable, do you require housing services from Utleiemegleren AS?

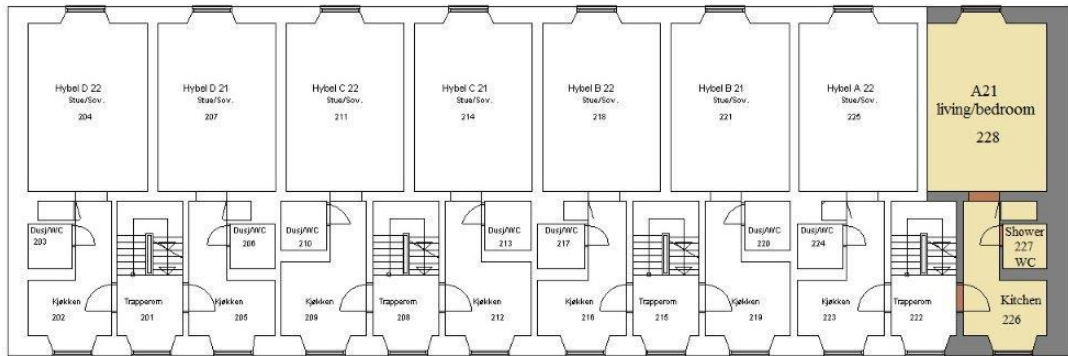
*If the applicant is not the person who pays the rent, please insert correct name and billing address here. Also any other information concerning the application

Accommodation Offered by NTNU

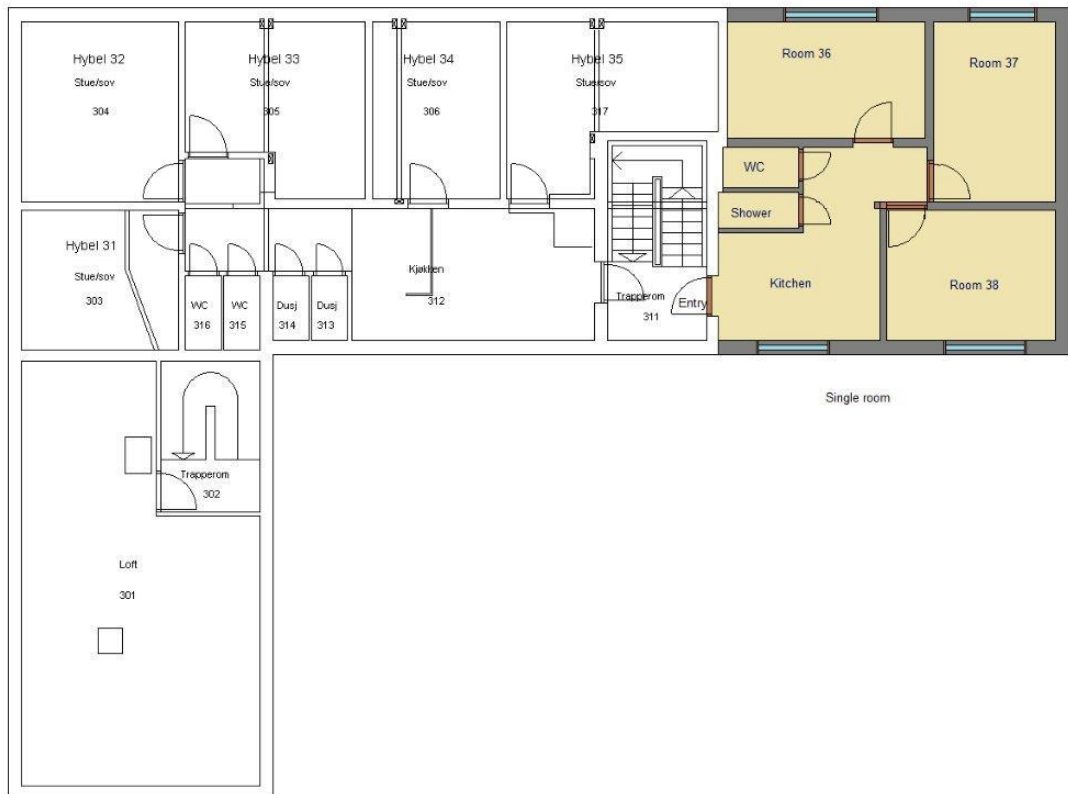
| | |
|------------------------------|----------------------|
| Sverres gate 8A | Bedsit |
| Sverres gate 8D | Bedsit |
| Sverres gate 8D | Bedsit |
| Hans Osnes' veg 12 | 2 Bedrooms apartment |
| Hans Osnes' veg 12 | 2 Bedrooms apartment |
| Hans Osnes' veg 12 | 5 Bedrooms |
| Klostergata 18B | 1 Bedroom apartment |
| Klostergata 18A | Single room |
| Klostergata 18A | Single room |
| Klostergata 18A | Single room |
| Gløshaugveien 5 | 3 Bedroom apartment |
| Gløshaugveien 5 | 1 Bedroom apartment |
| Gløshaugveien 5 | 1 Bedroom apartment |
| Gløshaugveien 12 | 1 Bedroom apartment |
| Gløshaugveien 12 | 1 Bedroom apartment |
| Gløshaugveien 12 | 1 Bedroom apartment |
| Gløshaugveien 12 | 1 Bedroom apartment |
| Geelmuydens gate 1 | 1 Bedroom apartment |
| Geelmuydens gate 1 | 1 Bedroom apartment |
| Geelmuydens gate 1 | 5 Bedrooms |
| Sollia 29 | 3 Bedrooms apartment |
| Edgar B. Schieldrops veg 6C | 1 Bedroom apartment |
| Edgar B. Schieldrops veg 22D | 1 Bedroom apartment |
| Arne Fjellbus veg 6D | 1 Bedroom apartment |
| Gløshaugveien 19 | 2 Bedrooms apartment |
| Gløshaugveien 19 | 4 Bedrooms |
| | |
| | |
| | |
| | |
| | |

| | |
|--|---|
| | Tenancy period 1 year Electricity is not included in the rent. |
| | Electricity is included in the rent. Short-term (1 - 6 months) |

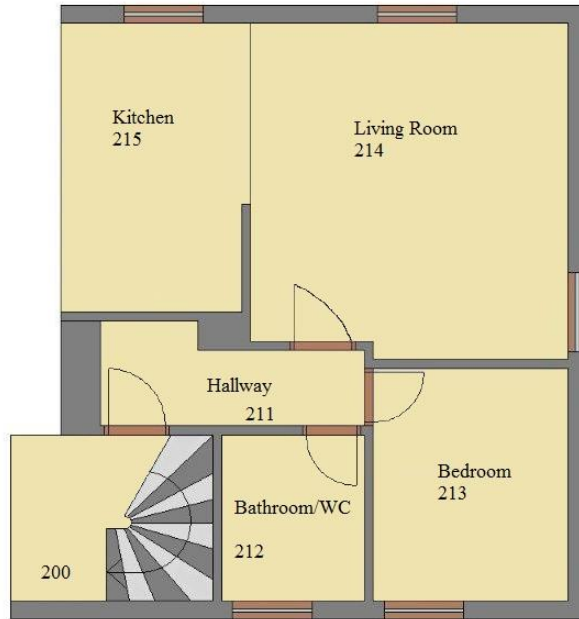
The plans shown here are examples only and may not be the actual accommodation offered.



Studio/bedsitter



Single room



One bedroom apartment



Two-bedroom apartment

Housing Foundation NTNU and SINTEF/ Boligstiftelsen NTNU og SINTEF

Housing Foundation NTNU and SINTEF's main purpose is to, manage and operate homes for temporary / short-term staff in academic positions at NTNU and SINTEF.

NTNU's housing policy is the basis for the allocation of housing.
Only PhD students / fellows from NTNU may apply.

Applications must be submitted via the **application gateway/ LYDIA Portal**.

JONSVANNSVEIEN

Housing Foundation have 66 apartments in Jonsvannsveien. The apartments include kitchen, living room, bedroom / 2 bedrooms, hallway and toilet / shower in the same room. Electricity is not included in the rent. 2 storage rooms for each apartment in the basement and 1 loft storage room. There is a door telephone installed and cable TV / radio reception (subscription included in rent along with cleaning of common areas, corridors / stairs etc.). Unfurnished. Deposit equivalent to 3 months' rent. Car parking available at the blocks. Laundry in the basement in Jonsvannsveien 93A and 105C. Internet and cable TV is included in the rent.

BALDERS VEG

Housing Foundation has 18 apartments in Balders veg. Apartments consist of: kitchen, living room, bedroom, hallway. In all apartments, there is a wardrobe between the living room and bedroom, pantry in the basement. Toilet and shower in separate rooms. Electricity is not included in the rent.

Laundry in the basement in Balders veg no. 3C and 5C. There is a door telephone installed and cable TV / radio reception (subscription is included in the rent along with cleaning of common areas, corridors / stairs etc.) Unfurnished. Deposit equivalent to 3 months' rent. Car parking available at the blocks. Internet and cable TV is included in the rent.