

---

# NTNU Boligformidling

## Information about NTNU housing

---



NTNU International Researcher Support (NIRS)  
[bolig@adm.ntnu.no](mailto:bolig@adm.ntnu.no)



**NTNU – Trondheim**  
Norwegian University of  
Science and Technology

# NTNU Housing Policy

NTNUs' housing policy states "permanent or temporary foreign employees and visiting scientists who will spend more than **1 month** at NTNU should have an offer of an accommodation when they arrive at NTNU. This may be either in housing owned by NTNU or in privately owned housing. This housing is primarily intended to cover the need for transitional housing (up to 3 months) and short-term housing (up to 1 year), and is not intended to be permanent housing".

*Accommodation is granted according to availability and in accordance with NTNUs' Housing Policy: All applications must be submitted via the LYDIA Portal:*

<http://lydiaweb.itea.ntnu.no/HousingApplication/Demand/NewDemand.aspx>

The following criteria are followed in the allocation of housing both for NTNU's own apartments and for apartments that are allocated via Boligstiftelsen SINTEF/NTNU:

1. Foreign workers with families, from countries with a visa requirement.
2. Foreign workers with families from countries outside of the Nordic countries that do not have a visa requirement.
3. Foreign employees without families from countries with a visa requirement.
4. Foreign employees without families from countries from outside of the Nordic region that do not have a visa requirement.

**\* Norwegian citizens, unfortunately cannot apply for this service**

NTNU has agreements with the following partners:

### **Trondheim Vandrerhjem**

NTNU has 21 single rooms at its disposal; Bathroom and kitchen are shared with two other persons.

**Comfort Hotel Park Trondheim.** 20 suites offered at a reduced rate,

941,- per day (7 days +)

841,- per day (1 month +)

Includes the following in the price:

- Breakfast, coffee / tea in the lobby all day, wireless internet, access to guest PC.
- Bicycle Rental
- Access to washer and dryer
- Access to relax area with sauna and gym

[https://www.nordicchoicehotels.com/comfort/comfort-hotel-park/about/?\\_ga=1.213240532.1988324642.1425371874](https://www.nordicchoicehotels.com/comfort/comfort-hotel-park/about/?_ga=1.213240532.1988324642.1425371874)

We also have an agreement with Norway's largest letting agency,


### **UTLEIEMEGLEREN A.S.**

This service is for people staying for more than 1 year. Should an applicant select a dwelling in the company's portfolio there is no charge. For extra searches, viewing, advertising on behalf of applicant etc. the charge is from NOK.5000, 00 to NOK. 6 250, 00.

# Application Format

<http://lydiaweb.itea.ntnu.no/HousingApplication/Demand/NewDemand.aspx>

Please make sure that you fill out all the sections. We recommend you to submit the application well in advance.

**New application** **My applications** 

Male/Female  Age  Date of birth (DD.MM.YYYY)  Citizenship

Position at NTNU (Guest researcher or Employed/PhD)  From (DD.MM.YYYY)  To (DD.MM.YYYY)

Contact person at NTNU

HOUSING NEEDS

Rental period from (DD.MM.YYYY)  Rental period to (DD.MM.YYYY)

Preferred housing option (priority 1,2,...)

- Studio Apartment (Bedsitter)  - 1 Bedroom Apartment  - 2 Bedroom Apartment

For larger accommodation, give additional information

Use of letting agency (Yes or No):

Utleiemegleren AS can assist you with finding an apartment price NOK 6250, more information on our web page.  
If NTNU or Boligstiftelsen NTNU/SINTEF-apartment is unavailable, do you require housing services from Utleiemegleren AS?

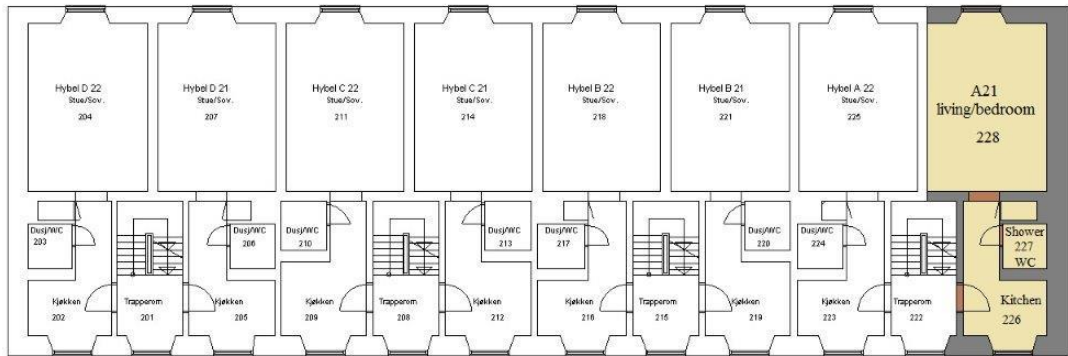
\*If the applicant is not the person who pays the rent, please insert correct name and billing address here. Also any other information concerning the application

# Accommodation Offered by NTNU

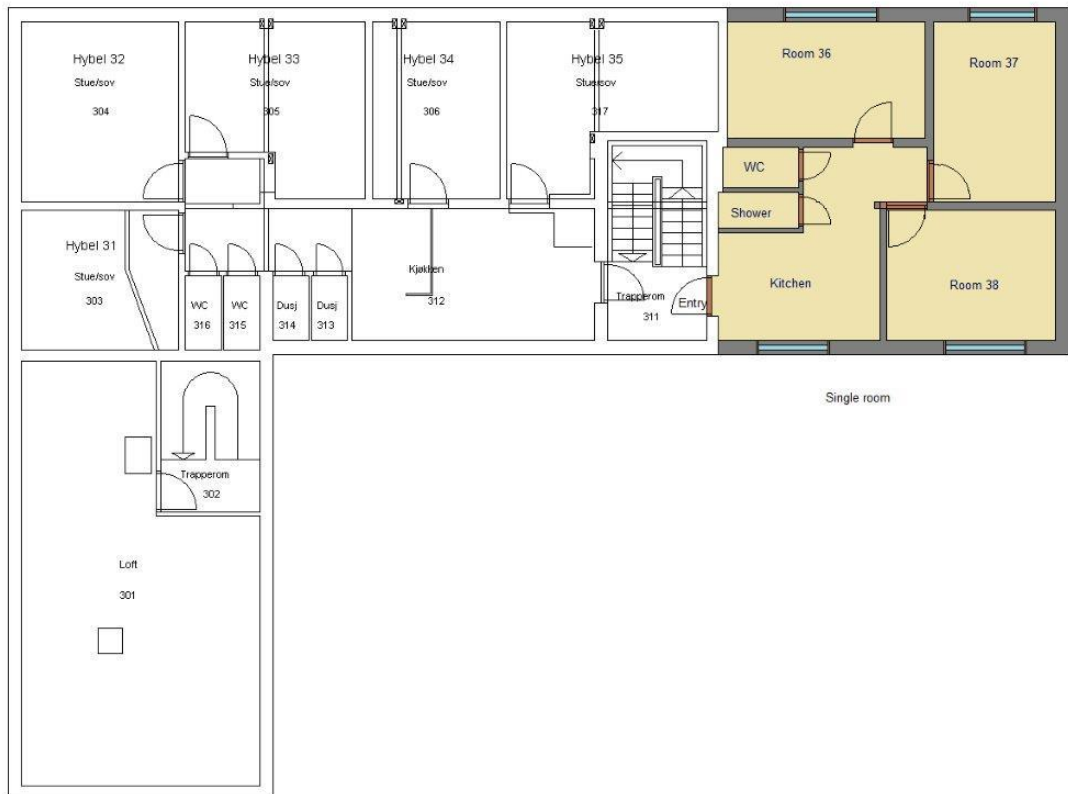
Sverres gt. 8 - A11	Bedsit
Sverres gt. 8 - A12	Bedsit
Sverres gt. 8 - A21	Bedsit
Stavs veggen 24	Detached House
Stavs veggen 30 A -	Semi-Detached House
Hans Osnes vei 12 - Apartment 1V	2 Bedrooms apartment
Hans Osnes vei 12 - Apartment 1H	2 Bedrooms apartment
Hans Osnes vei 12 - Apartment 102	5 Bedrooms
Klostergata 18 - Apartment 101	1 Bedroom apartment
Klostergata 18 - Room 36	Single room
Klostergata 18 - Room 37	Single room
Klostergata 18 - Room 38	Single room
Gløshaugvegen 5 - 2etg	3 Bedroom apartment
Gløshaugvegen 5 - Apartment 11	1 Bedroom apartment
Gløshaugvegen 5 - Apartment 12	1 Bedroom apartment
Gløshaugveien 12 - Apartment 1H	1 Bedroom apartment
Gløshaugveien 12 - Apartment 2V	1 Bedroom apartment
Gløshaugveien 12 - Apartment 3H	1 Bedroom apartment
Gløshaugveien 12 - Apartment 4V	1 Bedroom apartment
Geelmuydens gt 1 - Apartment 1V	1 Bedroom apartment
Geelmuydens gt 1 - Apartment 1H	1 Bedroom apartment
Geelmuydens gt 1 - 2etg	5 Bedrooms
Brundalsgrenda 21	2 Bedrooms apartment
Brundalsgrenda 26	2 Bedrooms apartment
Brundalen 27	2 Bedrooms apartment
Alexander Holsts vei 3	2 Bedrooms apartment
Havstadveien 15 A	3 Bedroom apartment
Havstadveien 15 D	3 Bedroom apartment
Sollia 29	3 Bedrooms apartment
Edgar B. Schieldrops v. 6 C	1 Bedroom apartment
Edgar B. Schieldrops v. 22 D	1 Bedroom apartment
Arne Fjellbus veg 6 D	1 Bedroom apartment
Gløshaugveien 19 Apartment 101	2 Bedrooms apartment
Gløshaugveien 19 - 2etg	4 Bedrooms
Kløbuveien 148/11	Semi-Detached House

	Tenancy period 1 year Electricity is not included in the rent.
	Electricity is included in the rent. Short-term (1 - 6 months)

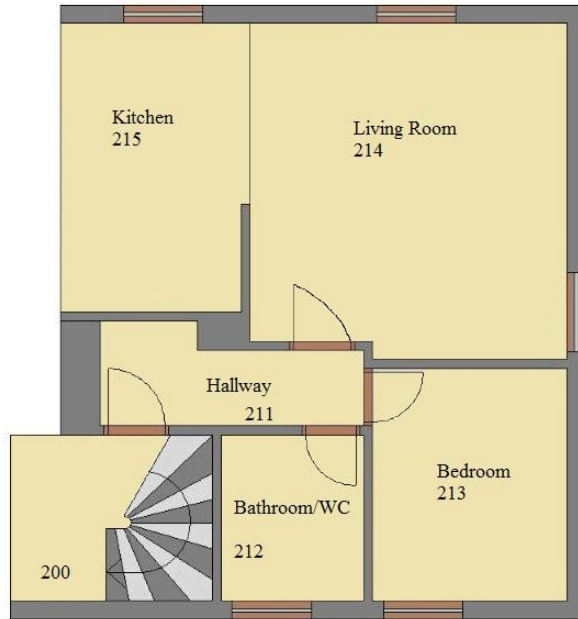
The plans shown here are examples only and may not be the actual accommodation offered.



### Studio/bedsitter



### Single room



One bedroom apartment



Two-bedroom apartment